

Moda Spell it with Fabric!

Moda Designer Blog Hop
Spring 2014



Parts — include seam allowance

Background:

1-4½" x 6½"

4-2½" x 2½"

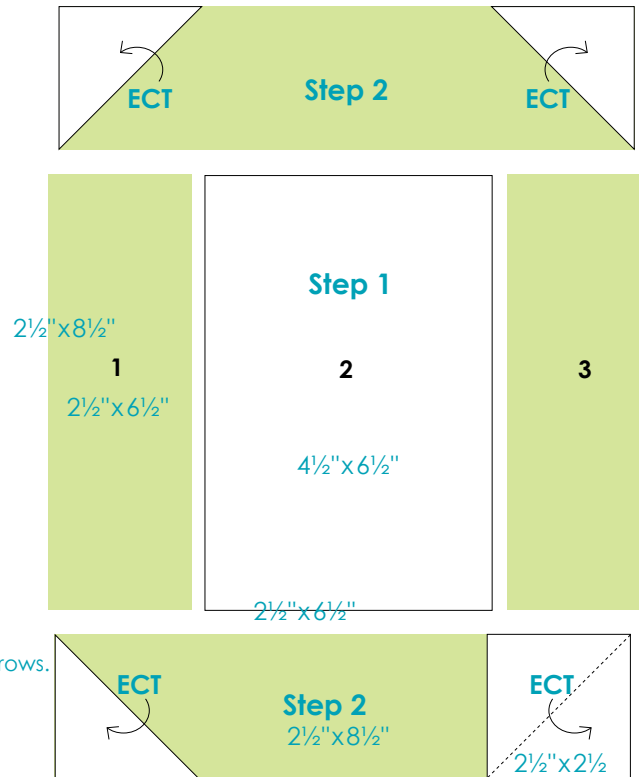
Print:

2-2½" x 8½"

2-2½" x 6½"

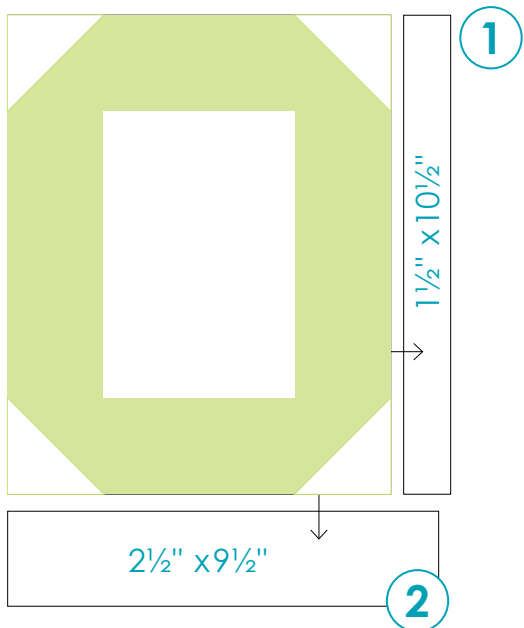
Press toward Print except some ECTs then follow direction of arrows.

*ECT - Easy Corner Triangles



moda

Block Assembly – Press toward sashings



Each **punctuation or number block** finishes at 8" x 10"

Add a 1½" x 10½" sashing strip to the right side of each letter. Press toward the sashing. Then add a 2½" x 9½" sashing strip to the bottom of the block. Press toward the sashing. See diagram.

All blocks should measure 9½" x 12½" with seams.

Moda Spell it with Fabric! *Moda Designer Blog Hop*

Spring 2014

Parts — include seam allowance

Background:

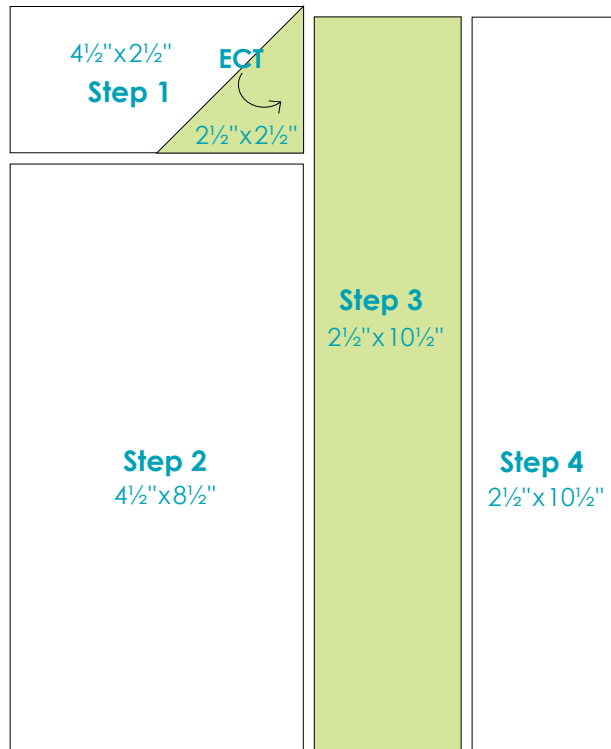
- 1-4½" x 8½"
- 1-2½" x 4½"
- 1-2½" x 10½"

Print:

- 1-2½" x 2½"
- 1-2½" x 10½"

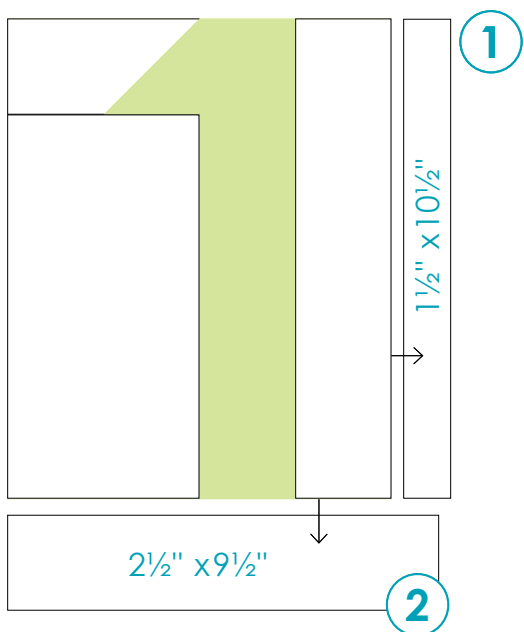
Press toward Print except some ECTs then follow direction of arrows.

*ECT - Easy Corner Triangles



moda

Block Assembly – Press toward sashings



Each **punctuation or number block** finishes at 8"x10"

Add a 1½"x10½" sashing strip to the right side of each letter. Press toward the sashing. Then add a 2½" x9½" sashing strip to the bottom of the block. Press toward the sashing. See diagram.

All blocks should measure 9½"x12½" with seams.



Moda Spell it with Fabric! *Moda Designer Blog Hop*

Spring 2014

Parts — include seam allowance

Background:

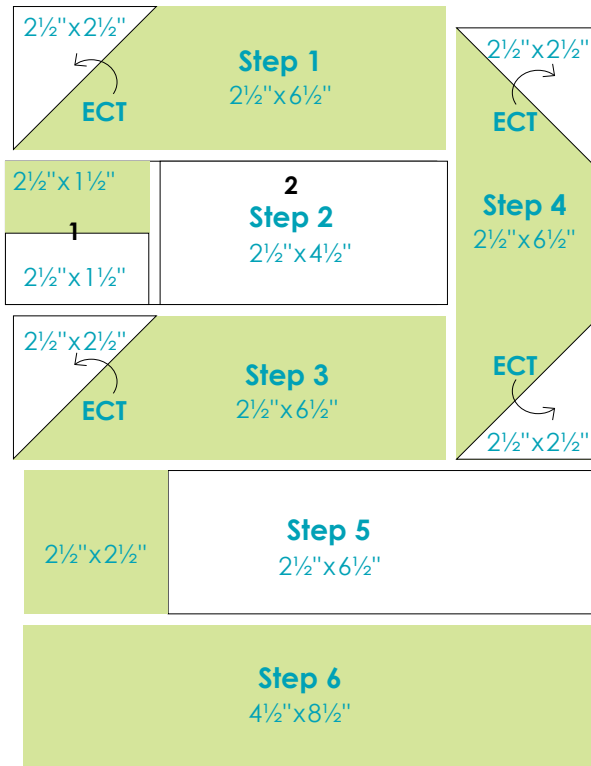
- 1-2½" x 1½"
- 4-2½" x 2½"
- 1-2½" x 4½"
- 1-2½" x 6½"

Print:

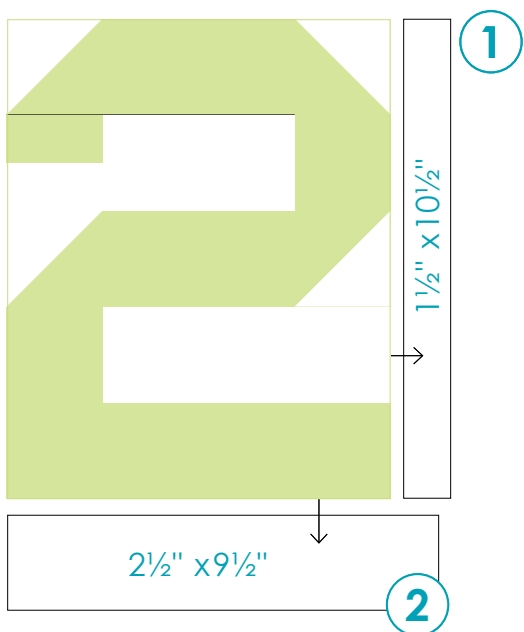
- 1-2½" x 1½"
- 1-2½" x 2½"
- 3-2½" x 6½"
- 1-2½" x 8½"

Press toward Print except some ECTs then follow direction of arrows.

*ECT - Easy Corner Triangles



Block Assembly – Press toward sashings



Each **punctuation or number block** finishes at 8" x 10"

Add a 1½" x 10½" sashing strip to the right side of each letter. Press toward the sashing. Then add a 2½" x 9½" sashing strip to the bottom of the block. Press toward the sashing. See diagram.

All blocks should measure 9½" x 12½" with seams.





Moda Spell it with Fabric! *Moda Designer Blog Hop*

Spring 2014

Parts — include seam allowance

Background:

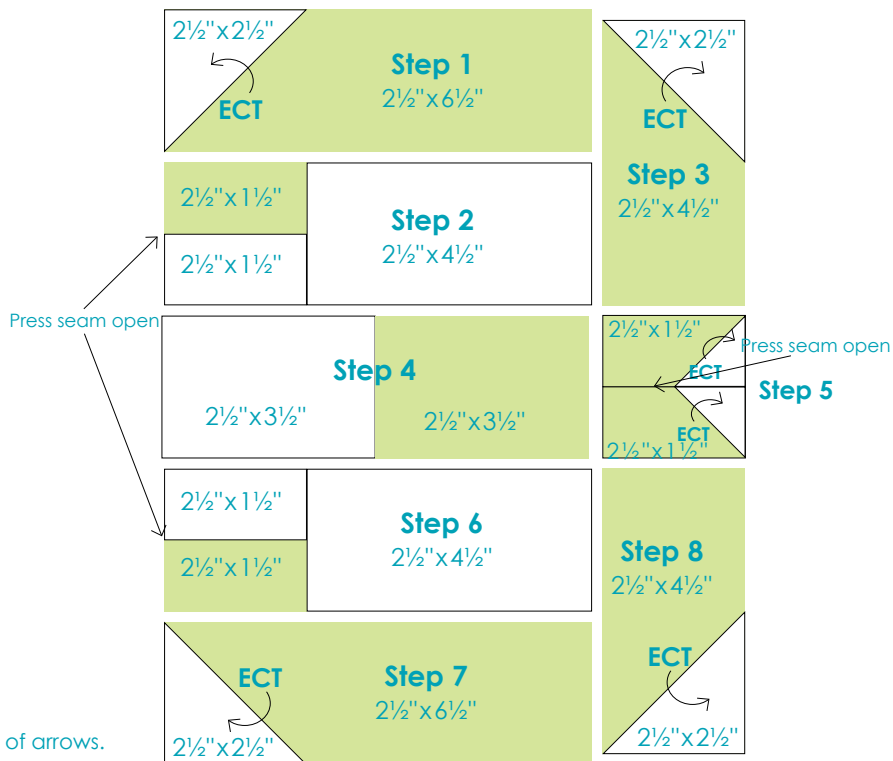
- 2-1½" x 1½"
- 2-2½" x 1½"
- 4-2½" x 2½"
- 1-2½" x 3½"
- 2-2½" x 4½"

Print:

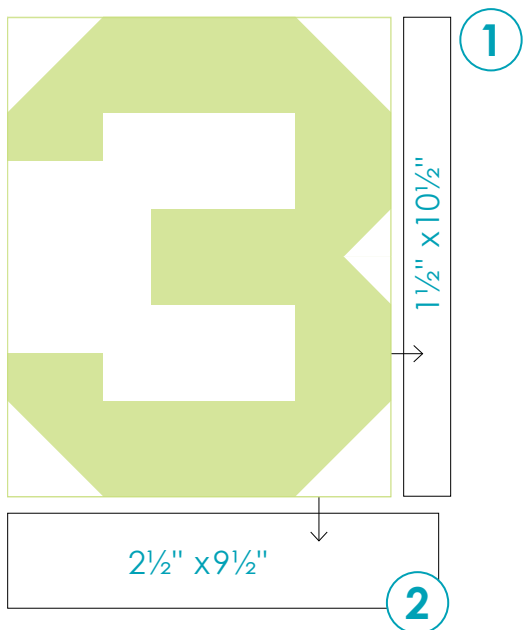
- 4-2½" x 1½"
- 1-2½" x 3½"
- 2-2½" x 4½"
- 2-2½" x 6½"

Press toward Print except some ECTs then follow direction of arrows.

*ECT - Easy Corner Triangles



Block Assembly – Press toward sashings



Each **punctuation or number block** finishes at 8" x 10"

Add a 1½" x 10½" sashing strip to the right side of each letter. Press toward the sashing. Then add a 2½" x 9½" sashing strip to the bottom of the block. Press toward the sashing. See diagram.

All blocks should measure 9½" x 12½" with seams.



4

Moda Spell it with Fabric! *Moda Designer Blog Hop*

Spring 2014

Parts — include seam allowance

Background:

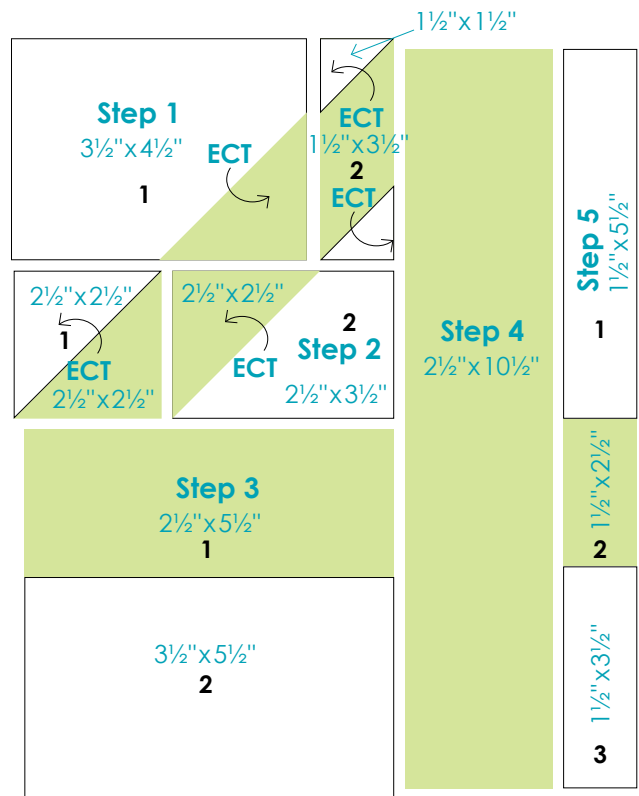
2-1½" x 1½" 1-2½" x 3½"
 1-1½" x 3½" 1-3½" x 4½"
 1-1½" x 5½" 1-3½" x 5½"
 1-2½" x 2½"

Print:

1-1½" x 2½" 1-2½" x 5½"
 1-1½" x 3½" 1-2½" x 10½"
 3-2½" x 2½"

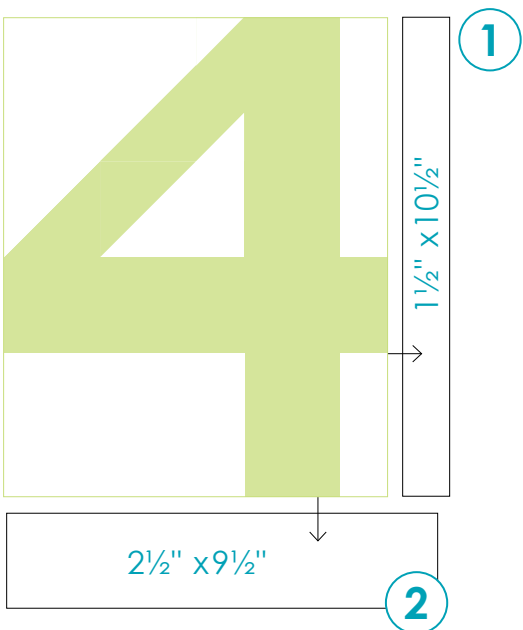
Press toward Print except some ECTs then follow direction of arrows.

*ECT – Easy Corner Triangles



moda

Block Assembly – Press toward sashings



Each **punctuation or number block** finishes at 8" x 10"

Add a 1½" x 10½" sashing strip to the right side of each letter. Press toward the sashing. Then add a 2½" x 9½" sashing strip to the bottom of the block. Press toward the sashing.

See diagram.

All blocks should measure 9½" x 12½" with seams.

Moda Spell it with Fabric! *Moda Designer Blog Hop*

Spring 2014



Parts — include seam allowance

Background:

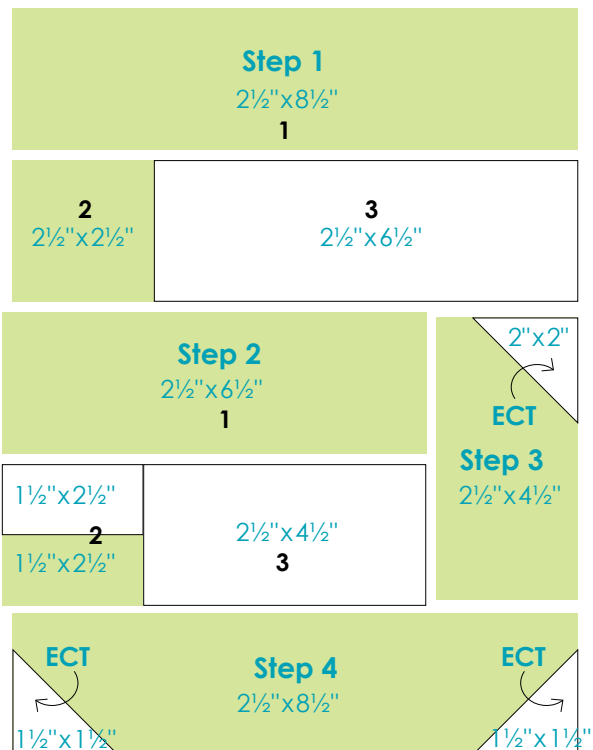
3-2" x 2" 1-2½" x 4½"
 1-1½" x 2½" 1-2½" x 6½"

Print:

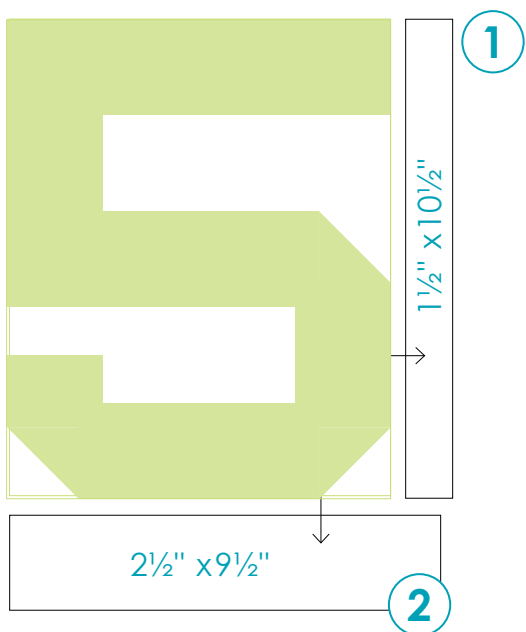
1-1½" x 2½" 1-2½" x 6½"
 1-2½" x 2½" 2-2½" x 8½"
 1-2½" x 4½"

Press toward Print except some ECTs then follow direction of arrows.

*ECT - Easy Corner Triangles



Block Assembly – Press toward sashings



Each **punctuation or number block** finishes at 8" x 10"

Add a 1½" x 10½" sashing strip to the right side of each letter. Press toward the sashing. Then add a 2½" x 9½" sashing strip to the bottom of the block. Press toward the sashing. See diagram.

All blocks should measure 9½" x 12½" with seams.



MODAFABRICS.COM

Moda Spell it with Fabric! *Moda Designer Blog Hop*

Spring 2014



Parts — include seam allowance

Background:

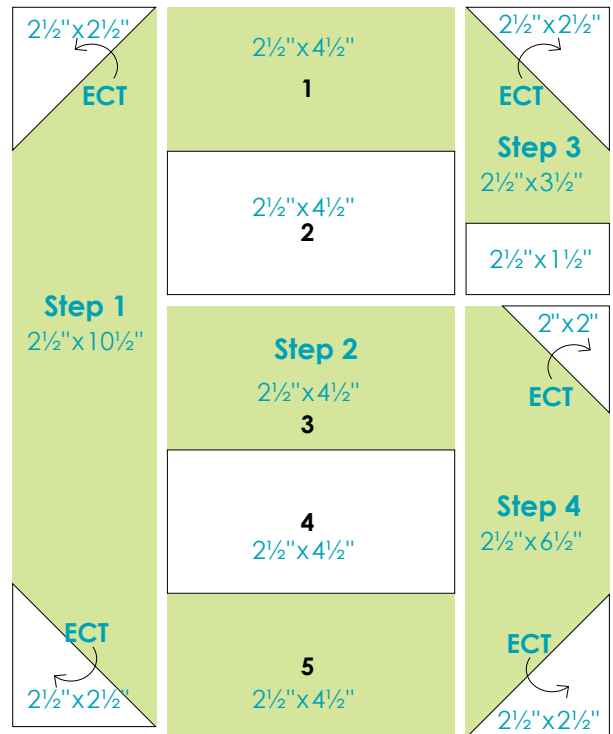
1-2½" x 1½" 4-2½" x 2½"
1-2" x 2" 2-2½" x 4½"

Print:

1-2½" x 3½" 1-2½" x 6½"
3-2½" x 4½" 1-2½" x 10½"

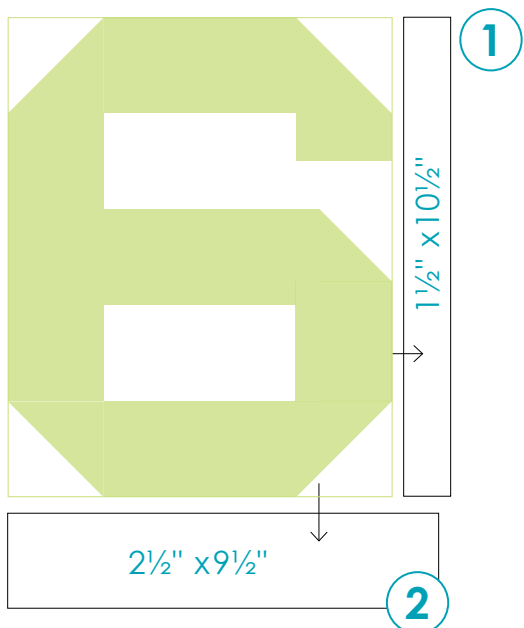
Press toward Print except some ECTs then follow direction of arrows.

*ECT - Easy Corner Triangles



moda

Block Assembly – Press toward sashings



Each **punctuation or number block** finishes at 8"x10"

Add a 1½"x10½" sashing strip to the right side of each letter. Press toward the sashing. Then add a 2½" x 9½" sashing strip to the bottom of the block. Press toward the sashing.

See diagram.

All blocks should measure 9½"x12½" with seams.

Moda Spell it with Fabric! *Moda Designer Blog Hop*

Spring 2014



Parts — include seam allowance

Background:

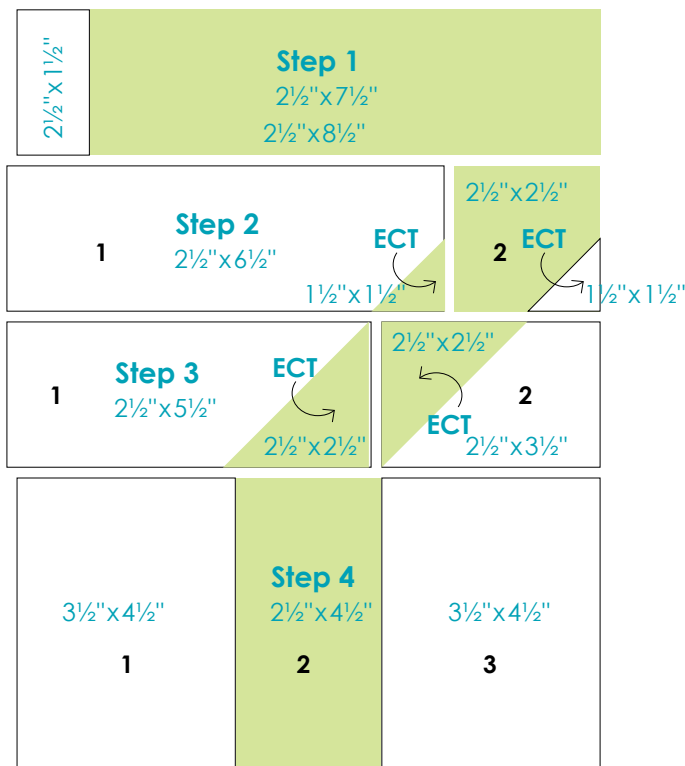
- 1-1½" x 1½" 1-2½" x 5½"
- 1-2½" x 1½" 1-2½" x 6½"
- 1-2½" x 3½" 2-3½" x 4½"

Print:

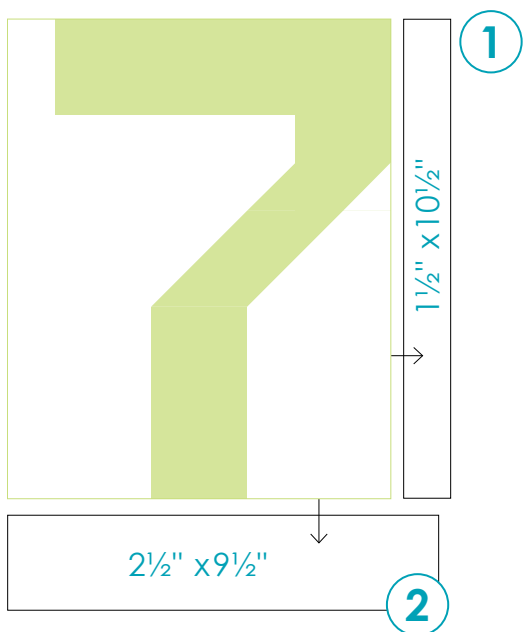
- 1-1½" x 1½" 1-2½" x 4½"
- 3-2½" x 2½" 1-2½" x 7½"

Press toward Print except some ECTs then follow direction of arrows.

*ECT – Easy Corner Triangles



Block Assembly – Press toward sashings



Each **punctuation or number block** finishes at 8" x 10"

Add a 1½" x 10½" sashing strip to the right side of each letter. Press toward the sashing. Then add a 2½" x 9½" sashing strip to the bottom of the block. Press toward the sashing. See diagram.

All blocks should measure 9½" x 12½" with seams.



Moda Spell it with Fabric! *Moda Designer Blog Hop*

Spring 2014



Parts — include seam allowance

Background:

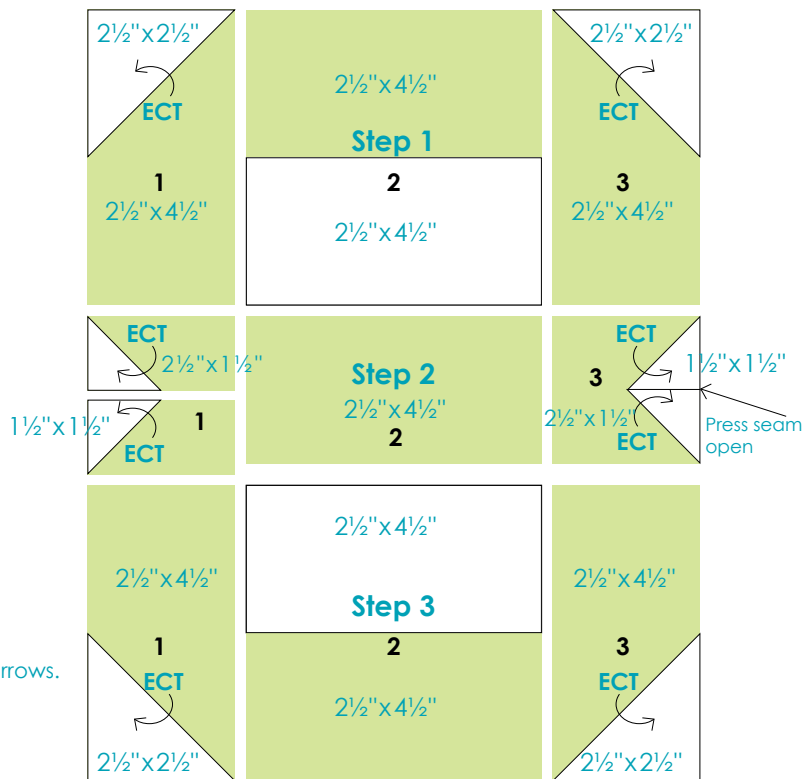
- 4-1½" x 1½"
- 4-2½" x 2½"
- 2-2½" x 4½"

Print:

- 4-2½" x 1½"
- 7-2½" x 4½"

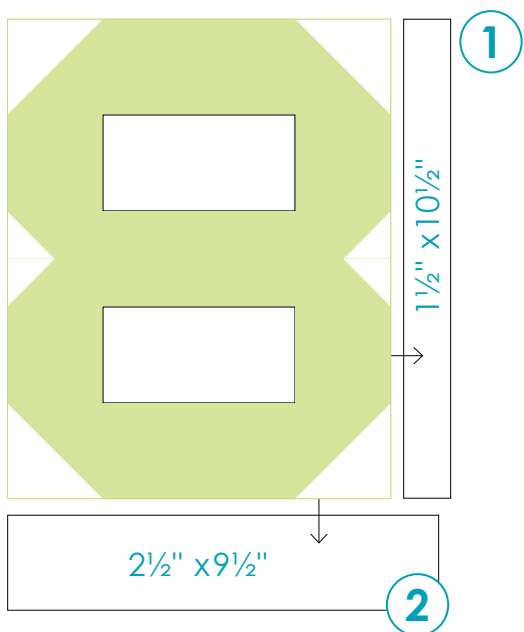
Press toward Print except some ECTs then follow direction of arrows.

*ECT – Easy Corner Triangles



moda

Block Assembly – Press toward sashings



Each **punctuation or number block** finishes at 8" x 10"

Add a 1½" x 10½" sashing strip to the right side of each letter. Press toward the sashing. Then add a 2½" x 9½" sashing strip to the bottom of the block. Press toward the sashing. See diagram.

All blocks should measure 9½" x 12½" with seams.

Moda Spell it with Fabric! *Moda Designer Blog Hop*

Spring 2014



Parts — include seam allowance

Background:

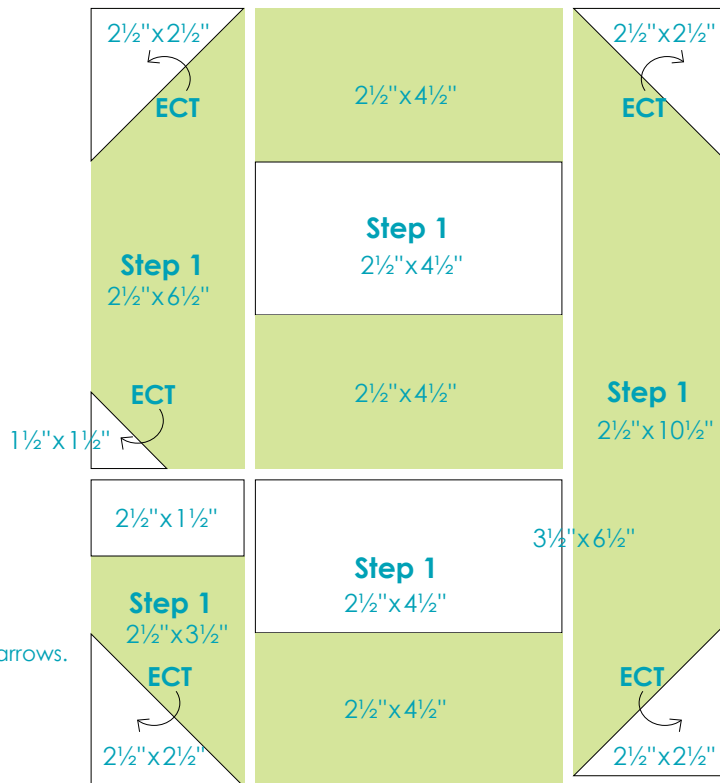
1-1½" x 1½" 4-2½" x 2½"
1-2½" x 1½" 2-2½" x 4½"

Print:

1-2½" x 3½" 1-2½" x 6½"
3-2½" x 4½" 1-2½" x 10½"

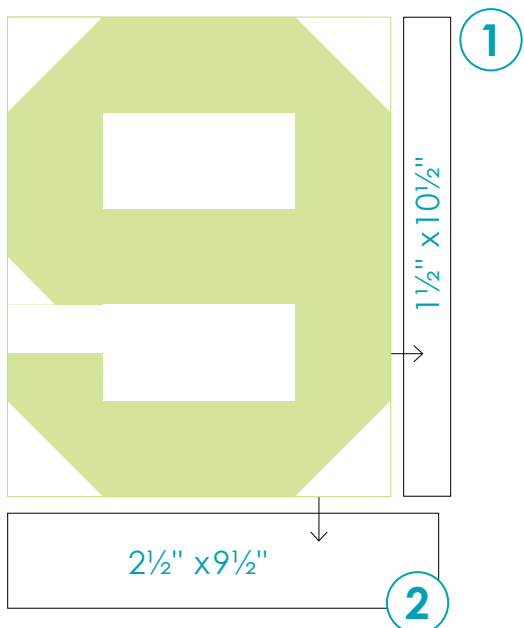
Press toward Print except some ECTs then follow direction of arrows.

*ECT - Easy Corner Triangles



moda

Block Assembly – Press toward sashings



Each **punctuation or number block** finishes at 8" x 10"

Add a 1½" x 10½" sashing strip to the right side of each letter. Press toward the sashing. Then add a 2½" x 9½" sashing strip to the bottom of the block. Press toward the sashing. See diagram.

All blocks should measure 9½" x 12½" with seams.