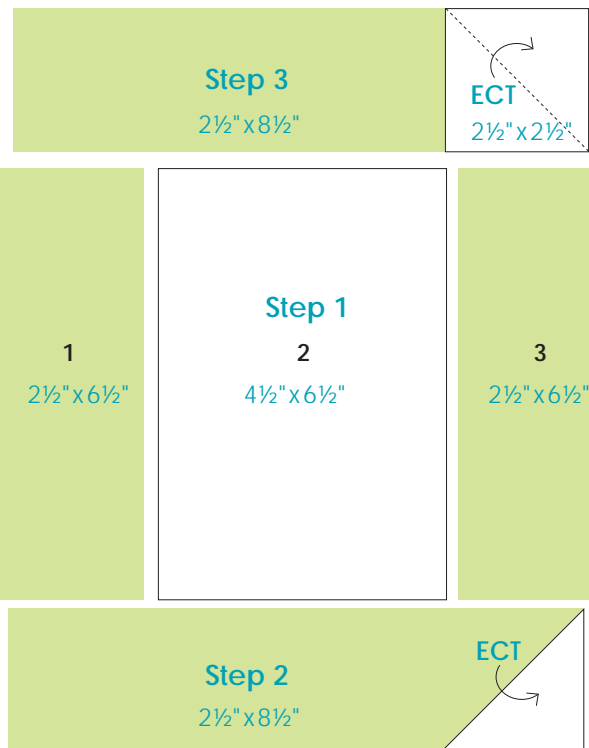


Moda Spell it with Fabric! *Moda Designer Blog Hop*

Spring 2014



Parts — include seam allowance

Background:

- 1-4 1/2" x 6 1/2"
- 2-2 1/2" x 2 1/2"

Print:

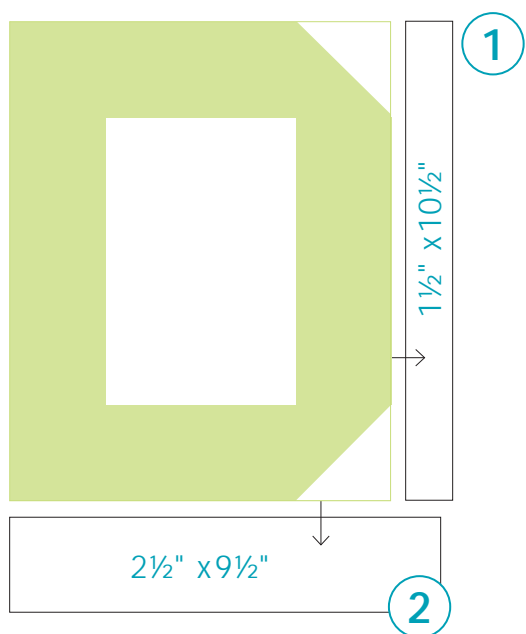
- 2-2 1/2" x 8 1/2"
- 2-2 1/2" x 6 1/2"

Press toward Print except some ECTs then follow direction of arrows.

*ECT - Easy Corner Triangles



Block Assembly – Press toward sashings



Each **letter block** finishes at 8" x 10"

Add a 1 1/2" x 10 1/2" sashing strip to the right side of each letter. Press toward the sashing. Then add a 2 1/2" x 9 1/2" sashing strip to the bottom of the block. Press toward the sashing. See diagram.

Both Letter and Pieced blocks should measure 9 1/2" x 12 1/2" with seams.



moda

MODAFABRICS.COM