

Moda Spell it with Fabric!

Moda Designer Blog Hop
Spring 2014



Parts — include seam allowance

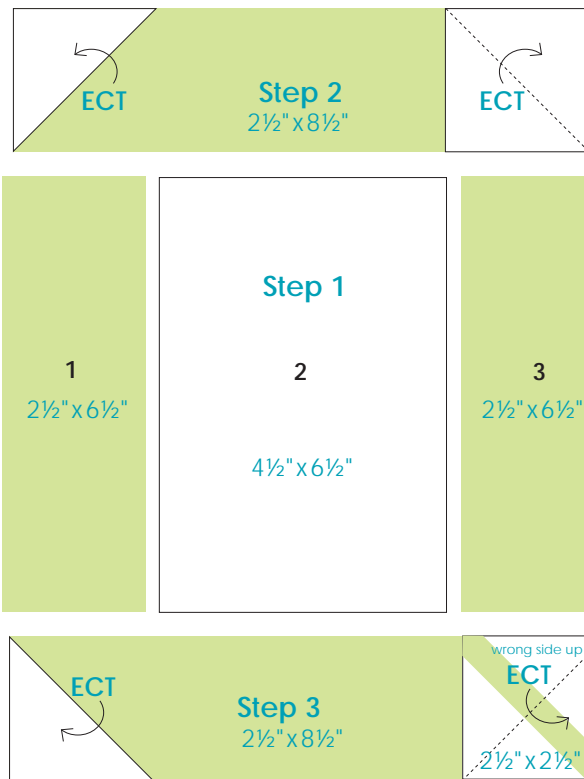
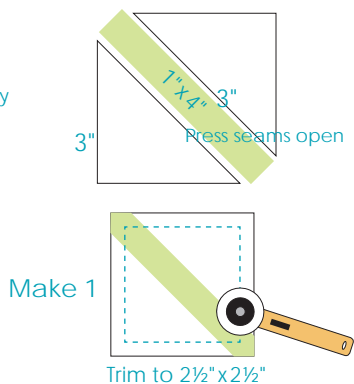
Background:

- 1-4½" x 6½"
- 1-3" x 3" cut once diagonally
- 3-2½" x 2½"

Print:

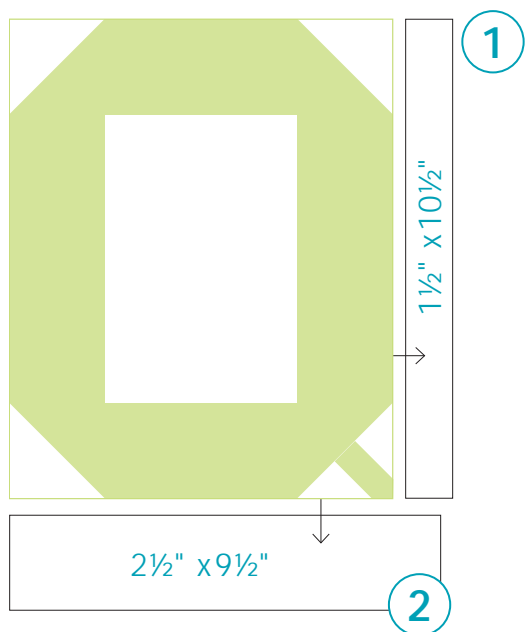
- 2-2½" x 8½"
- 2-2½" x 6½"
- 1-1" x 4"

Press toward Print



moda

Block Assembly – Press toward sashings



Each **letter block** finishes at 8" x 10"

Add a 1½" x 10½" sashing strip to the right side of each letter. Press toward the sashing. Then add a 2½" x 9½" sashing strip to the bottom of the block. Press toward the sashing. See diagram.

Both Letter and Pieced blocks should measure 9½" x 12½" with seams.