



Squares ~ Quilt is 20" x 20".



Pinwheels ~ Quilt is 18" x 21".



Chain ~ Quilt is 29½" x 33¾".

Courtyard *3 Sisters*

*Quilts are made
using the
New Moda Treats!*

Moda Treat Packs have
42 - 3 ½" squares.

moda



Square

Quilt is 20" x 20".

Fabric Requirements

2 Courtyard Moda Treats Packs

44120MT (one pack = 42 - 3½" squares)

Binding: ⅓ yard

Backing: ⅞ yard

Cutting

2 Courtyard Moda Treats Packs

Select 25 matching pairs of squares.

Cut the squares in half on the diagonal to make

25 sets of 4 matching half-square triangles. (HST)

Select 25 squares for the block centers.

Trim the 25 squares to measure 3⅜" x 3⅜".

Binding

3-2½" x width of fabric strips

Sew the strips end-to-end to make the binding.

moda

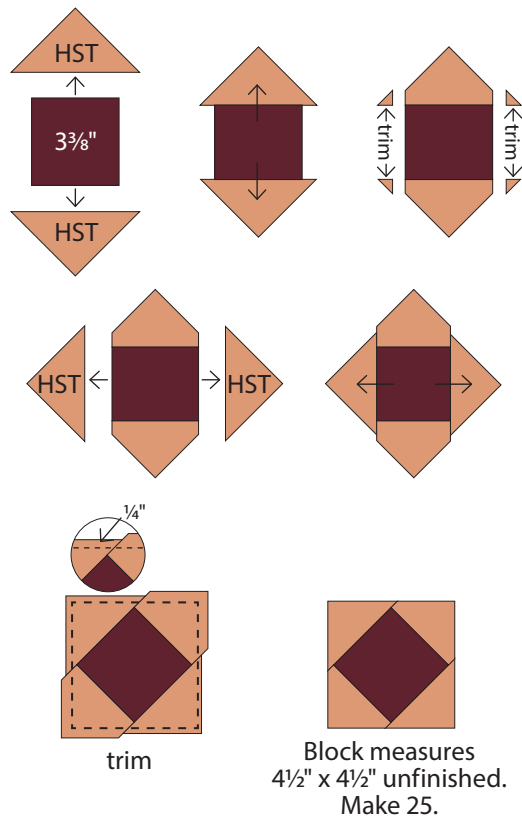
Use scant ¼" seam allowance.

Press in the direction of the arrows in the diagrams.

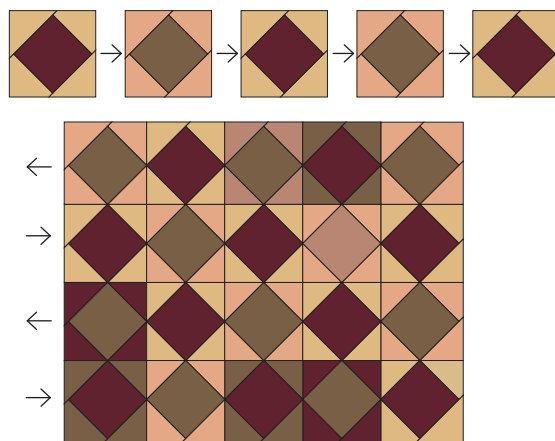
Construction

1 To make one block:

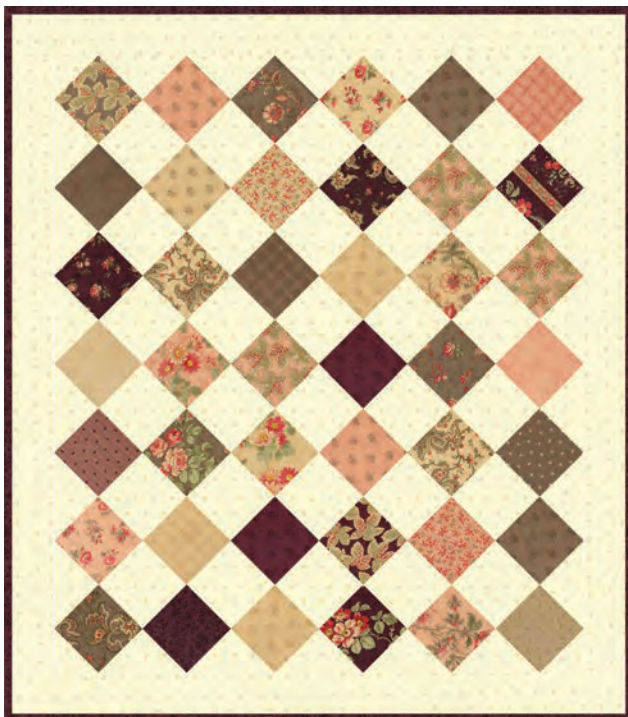
Select one set of 4 matching half-square triangles (HST) and one 3⅜" square. Center and sew 2 HSTs to opposite sides of the square. Press and trim. Center and sew 2 HSTs to the remaining 2 sides, press. Trim the block, leaving ¼" seam allowances, to 4½" x 4½". Make 25 blocks.



2 Arrange and sew 5 rows of 5 blocks as shown. Press rows in alternating directions. Join the rows. Layer, quilt, and bind.



Quilt is 20½" x 20½" unfinished.



Chain

Quilt is 29½" x 33¾".

Fabric Requirements

1 Courtyard Moda Treats Pack

44120MT (one pack = 42 - 3½" squares)

Background: 1 yard

Binding: ⅓ yard

Backing: 1 yard

Cutting

Background

1-5½" x width of fabric strip

From the strip, cut 6-5½" squares; cut twice on the diagonal to make 24 quarter-square triangles (QST) (2 are extra) and 2-3" squares cut in half once on the diagonal to make 4 corner triangles

3-3½" x width of fabric strips

From the strips, cut 30-3½" squares

4-2½" x width of fabric strips for the borders

Binding

4-2½" x width of fabric strips

Sew the strips end-to-end to make the binding.

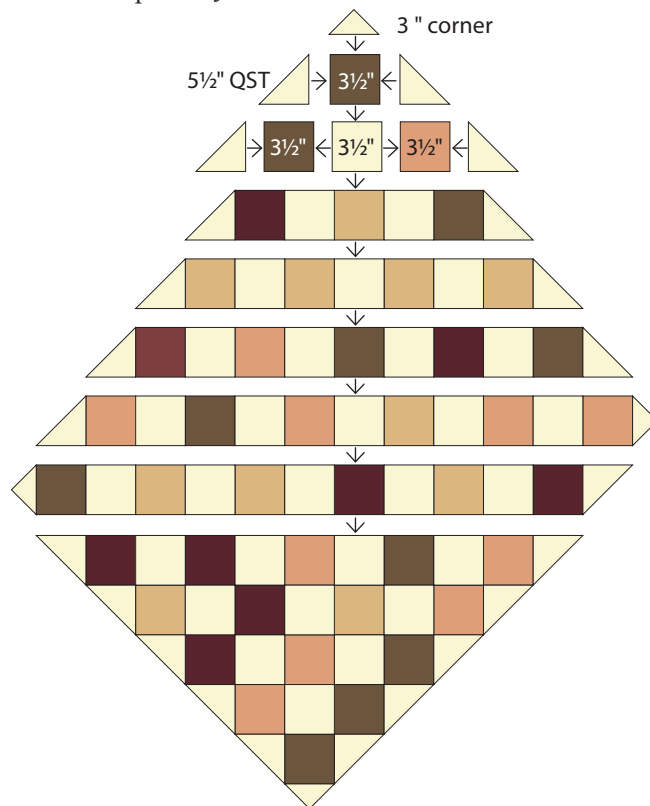
moda

Use scant ¼" seam allowance.

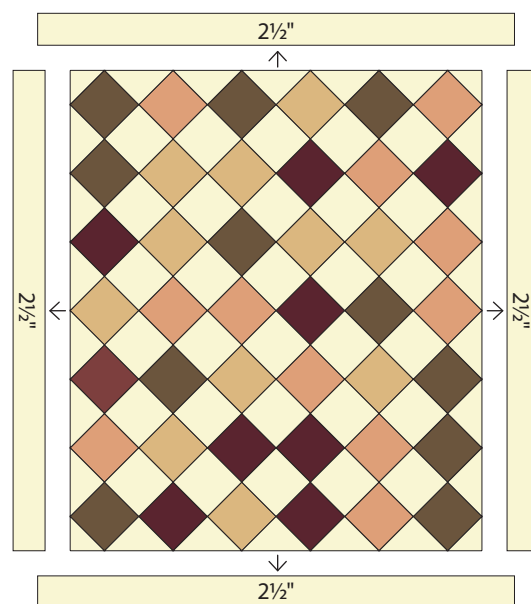
Press in the direction of the arrows in the diagrams.

Construction

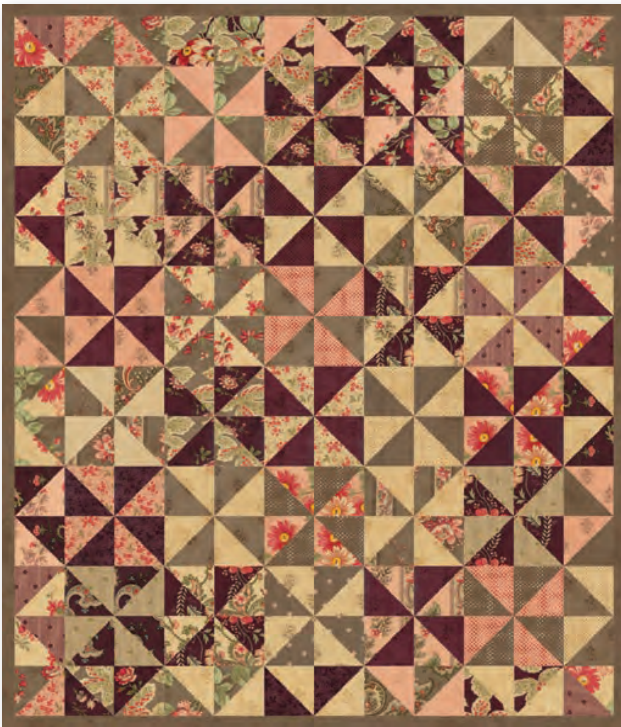
- 1 Assemble the quilt in rows as shown. Press toward the Treat squares. Join the rows.



- 2 Measure the across the vertical center of the quilt for the best length for the side borders. Cut the 2½" strip to that length, add to the quilt sides. Measure the across the horizontal center of the quilt for the best length to cut the top and bottom borders. Cut and add to the top and bottom. Layer, quilt, and bind.



Our quilt measures 30" x 34¼" unfinished.



Pinwheels

Quilt is 18" x 21".

Fabric Requirements

2 Courtyard Moda Treats Packs

44120MT (one pack = 42 - 3½" squares)

Binding: ⅓ yard

Backing: ⅞ yard

Cutting

2 Courtyard Moda Treats Packs

Select 42 pairs of 1 light and 1 dark square.

Binding

3–2½" x width of fabric strips

Sew the strips end-to-end to make the binding.

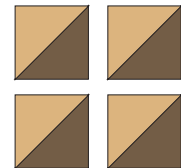
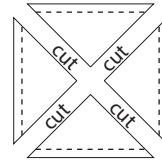
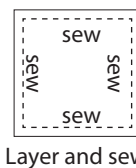
Because the half-square triangles and finished blocks will have bias on the four outside edges, we recommend starching or sizing the squares before sewing.

Use scant ¼" seam allowance.

Press in the direction of the arrows in the diagrams.

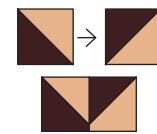
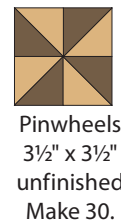
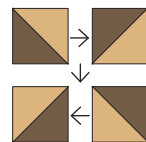
Construction

- Layer a pair of light and dark 3½" Moda Treat squares right sides together. Sew a scant ¼" on all sides as shown. Cut in half twice on the diagonal. Press to the dark print to make 4 matching half-triangle squares (HST). Trim to 2" x 2". Make 42 sets of 4 matching HSTs.



Trim to 2" x 2".
Make 42 matching sets.

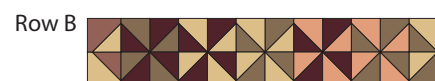
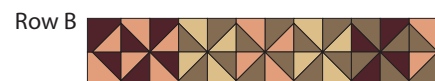
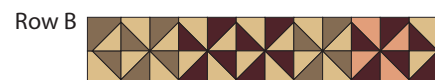
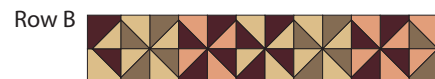
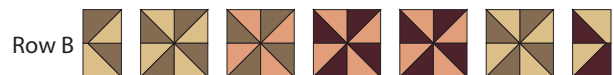
- Join a set of 4 matching HSTs to make a pinwheel as shown. Make 30. Join a pair of matching HSTs to make a half block. Make 12. The 4 single HSTs are for the quilt corners.



Half Block 2" x 3½" unfinished
Make 20.

- Arrange and sew 2 single HSTs and 5 half blocks as shown to make Row A. Make 2. Arrange and sew 5 pinwheels and 2 half blocks as shown to make Row B. Make 6.

Join the rows. Layer, quilt, and bind.



Quilt is 18½" x 21½" unfinished.



moda

MODAFABRICS.COM

MTPS44120