



Size: 54"x60"



Morris & Company

Barbara Brackman

moda



Morris & Company

Barbara Brackman

Quilt Size: 54"x60"

Block Size: 6"x6"

Quilters Basics

Read instructions before beginning a project.

All instructions include a 1/4" seam allowance.

Press as you go. Press seams in one direction.

22" measurement is approximate.

Cutting:

From EACH fat quarter (Cut carefully as 17½" of each fat quarter will be used)

Cut 7 – 2½"x22" strips

Subcut 21 – 2½"x7" strips for fans

Background

Cut 35 – 2½"xWOF strips

Subcut 6 – 2½"x7" units from each strip for a total of 210 background strips for fans

Inner Border

Cut 4 – 2"xWOF strips for inner border

Cut 2 – 2½"xWOF strips

Subcut 12 – 2½"x7" strips for fans

Fan Handles

Cut 3 – 8¼"xWOF strips

Subcut 11 – 8¼"x8¼" squares for fan handles

Binding, Flange and Blocks

Cut 7 – 2½"xWOF strips for binding

Cut 2 – 1½"xWOF strips for flange

Subcut 4 – 1½"x12½" strips

Cut 2 – 2½"xWOF strips

Subcut 12 – 2½"x7" strips for fans

Sheer Interfacing

Cut 11 – 8¼"x8¼" squares

Outer Border

Fussy cut (centering the large rust blossom) 6 – 7½"xWOF strips for outer border. See diagram.



Fussy Cut 6 – 7½"xWOF border strips

moda

Construction

Fan Blocks – 6½"x6½"with seams Make 42

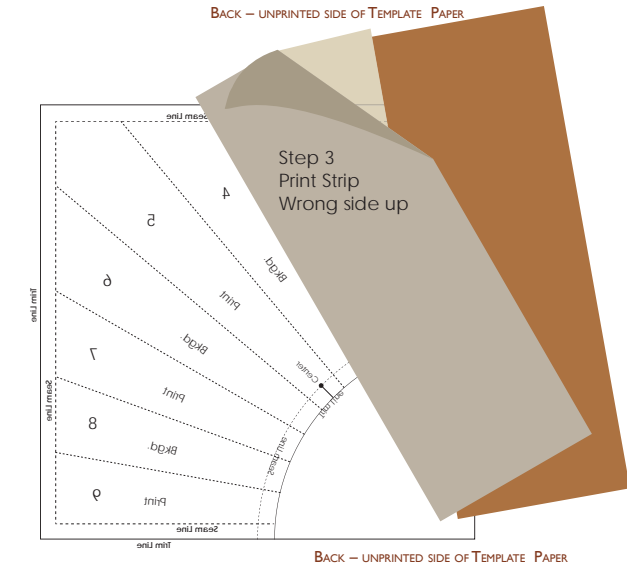
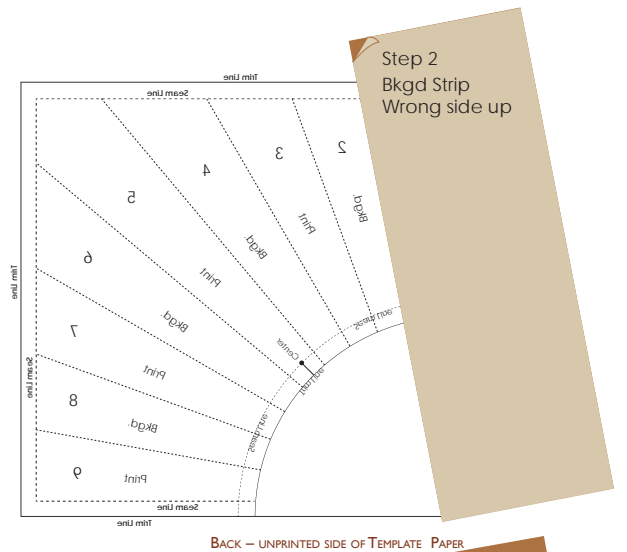
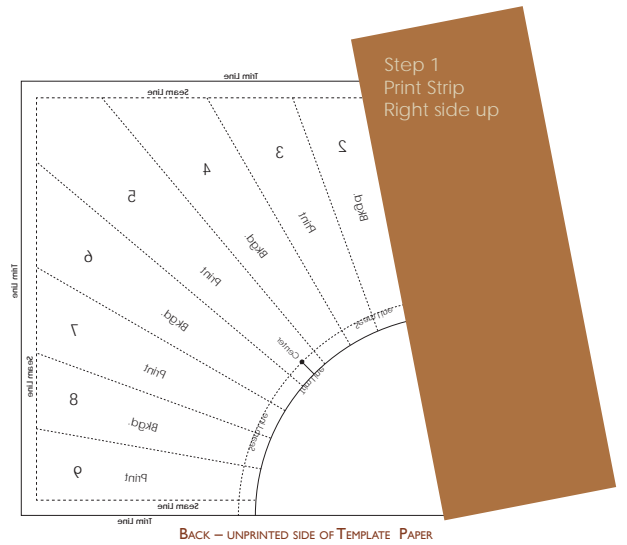
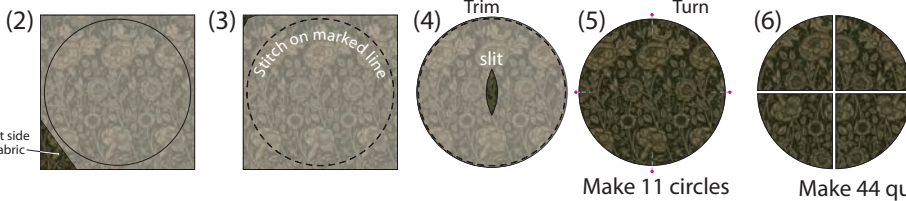
The fan blocks are paper pieced. Print 42 Pieced Fan Template papers. Make sure each paper template measures 6½"x6½" at the trim line, as copiers/printer occasionally distort printed images. *Remember fabric is placed on the back (unprinted) side of the paper piecing template paper. Stitching is done on the dashed line. Trimming is done on the solid lines.*

1. Select a 2½"x7" print strip. Place it right side up on the **back side** of the paper piecing template. It should cover the #1 blade extending past the trim lines and the dashed seam line between blades 1 and 2. Pin in place.
 2. Choose a background strip and place it wrong side up on top of the #1 print strip.
 3. Turn to front side of template and stitch on the dashed line between #1 and #2. Trim seam allowance to ¼". Press background strip over the #2 blade position.
 4. Place another print strip wrong side up on the #2 background blade. Stitch on the dashed line between 2 and 3. Trim seam allowance. Flip and press.
- Repeat steps above, alternating print and background strips, thru #9 to complete blades of fan block.*
5. Trim block on marked lines, including the curved trim line for fan handle.

Add Handle to Fan Block

1. Using the enclosed circle template, trace 11 circles on sheer interfacing.
 2. Pin marked interfacing on right side of 8¼"x8¼" fan handle square.
 3. Stitch on marked line.
 4. Trim a scant ¼" from the stitched line, slit the interfacing, turn the circle right side out smoothing curves. *Hint: The roller ball in a Sewline Trio pen is perfect for smoothing curves.* Press.
 5. Fold prepared circle in half both ways to find and mark center.
 6. Using a rotary cutter and ruler align marked centers and cut circle into quarters. Repeat with remaining circles to make 44 quarter circle fan handles.
 7. Hand or machine applique fan handles to pieced fan blocks.
- Note: handles are slightly oversized.*
6. Square up block to measure 6½"x6½" with seams.

Choose 4 fan blocks and stitch together with fan handles toward center to make a 12½"x12½" sun block. *See diagram on next page.*



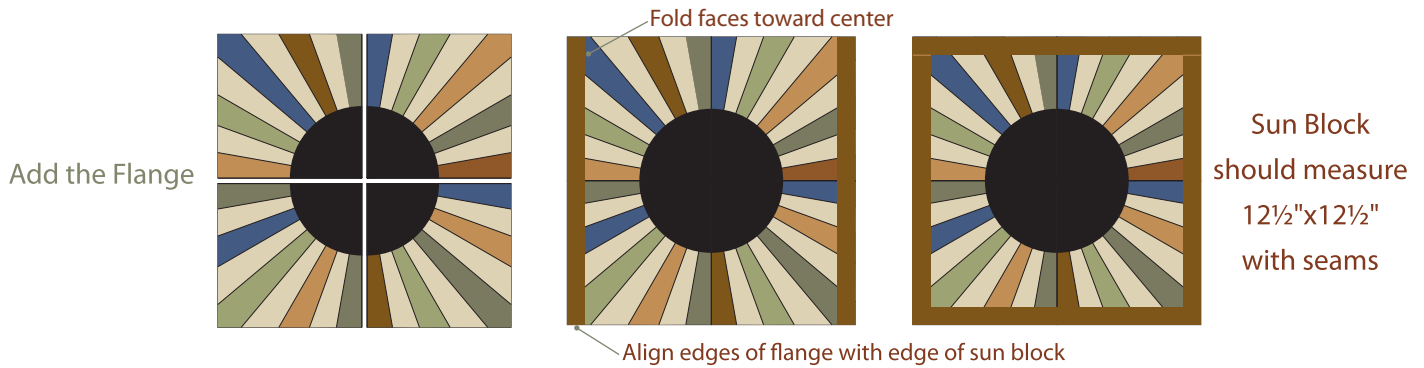
Assemble Quilt

Make Sun Block with Flange

Add the Flange

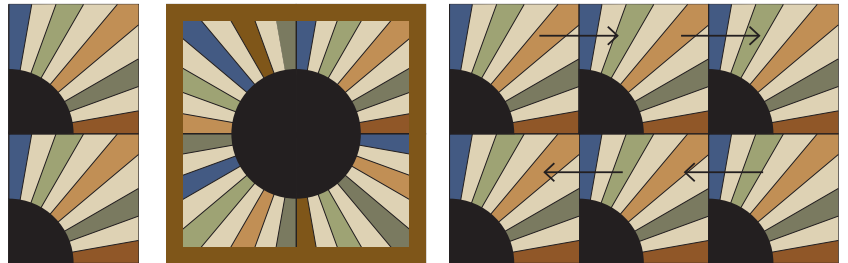
Fold the 4 – 1½"x12½" strips in half with wrong sides together. Press. Align edges of 2 folded strips with opposite sides of 12½"x12½" block – folded edge facing center of block. *See diagram next page.*

Stitch a scant eighth inch seam to hold flange strips in place. Repeat steps to add remaining strips to top and bottom of block. Press. *Note: Top and bottom strips will overlap side strips. Block should still measure 12½"x12½"with seams.*



Assemble Quilt Blocks

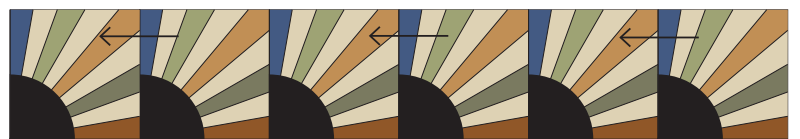
1. Stitch 5 rows of 6 blocks press all seams in each row in the same direction, but alternate direction of every other row.
2. Stitch one column of 2 blocks and 1 unit of 6 blocks. *See diagram.*
3. Join the various units. Press in direction of arrows. Assembled quilt top should measure 36½" x 42½" with seams.



Borders

Inner Border

1. Measure quilt top from top to bottom through the center. Cut 2 – 2" x WOF strips to that measurement (approx. 42½"). Add to opposite sides of quilt top. Press seams toward inner border.
2. Measure quilt top through the center from side to side, including inner border, . Cut remaining 2 inner border strips to that measurement (approx. 39½"). Add to top and bottom of quilt top. Press seams toward inner border. Quilt top should measure 39½" x 45½" with seams.



Outer Border

1. Measure quilt top from side to side through the center. Cut 2 – 7½" x WOF fussy cut strips to that measurement (approx. 39½").
2. Add to top and bottom of quilt top. *Note direction of flowers.* Press seam toward inner border.
3. Using a bias seam join remaining outer border strips. Press.
4. Measure length of quilt top through the center – including outer borders. Cut 2 outer border strips to that measurement (approx. 59½"). *Note direction of flowers and add to opposite sides of quilt top to complete this quilt.*
Quilt top should measure 53½" x 59½" with seams.



Quilt top should measure 36½" x 42½" with seams

Finishing

Using a bias seam, join the 7 – 2½" x WOF strips end to end. Press seams open. Fold prepared strip in half wrong sides together and press to make the binding.

Layer, Quilt and Bind.

Fabric Requirements:

Outer Border



8217 11
2¾ yards

Background



8211 17
2½ yards

Inner Border & Blades



8213 18
¾ yard

Fan "Handles"



8213 11
¾ yard

Binding, Flange & Blades



8213 17
⅝ yard

9 Fat Quarters



8213 19



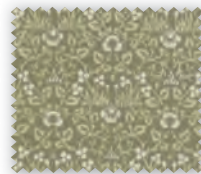
8215 11



8211 16



8214 14



8210 19



8210 15



8213 15



8217 17



8215 12

Sheer Interfacing ¾ yard

Backing 3½ yards pieced across

This latest collection of William Morris reproductions by Barbara Brackman is named for "the firm," as Morris and his friends called their design workshop. Morris & Company included the designers, dyers, printers and weavers who followed Morris's ideals and continued them into the twentieth century. Morris & Company was in business from 1875 to 1940

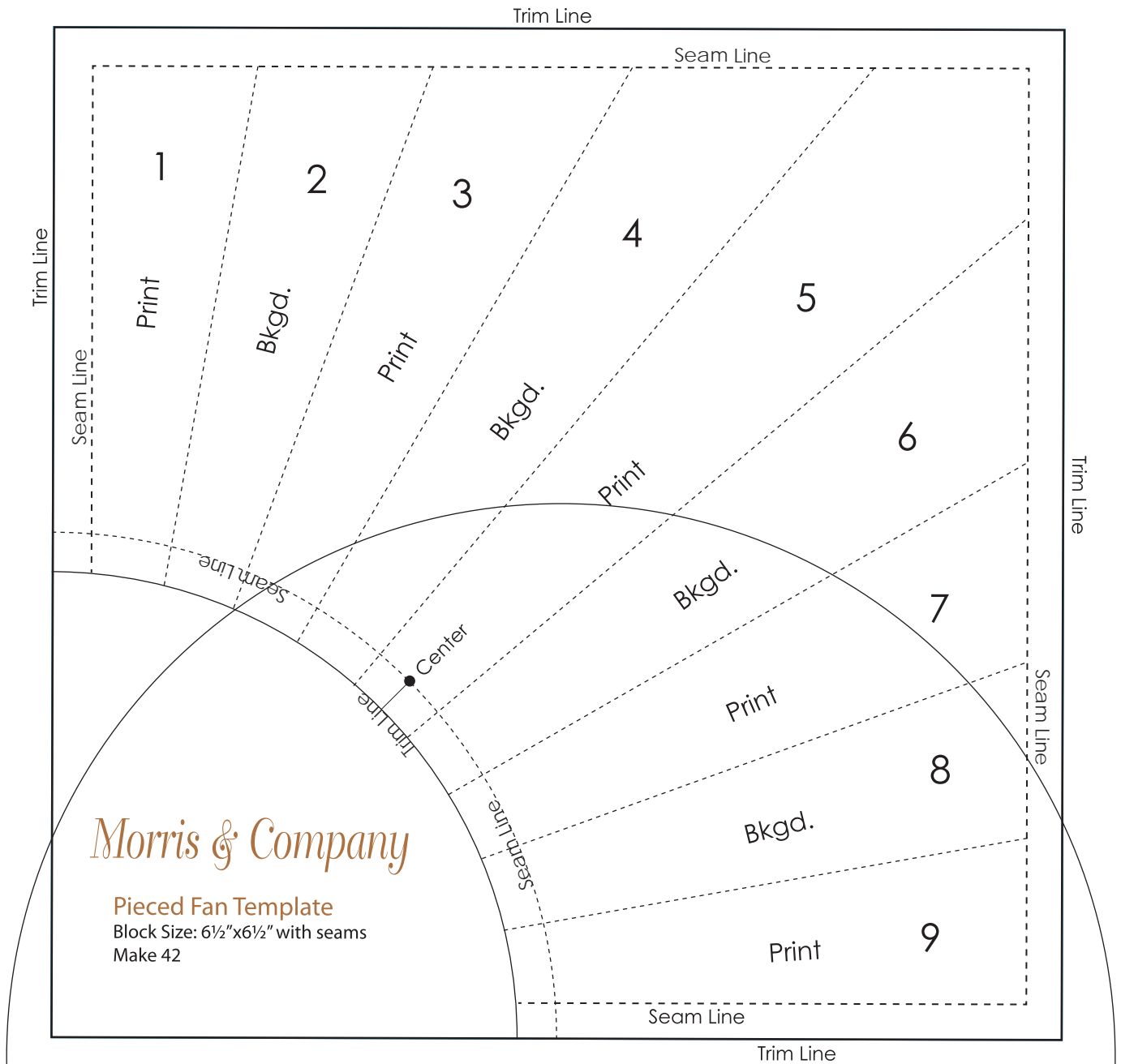


moda

MODAFABRICS.COM

PS8210 — SUGGESTED RETAIL \$6.00





Morris & Company

Pieced Fan Template
 Block Size: 6½"x6½" with seams
 Make 42

Templates are 100%
 Do Not Enlarge
 Make sure fan template
 measures 6½"x6½" from
 Trim Line to Trim Line

Make 42 copies

moda

Circle Template – Trace 11 circles on sheer interfacing – Template includes seams