

# Moda Spell it with Fabric! *Moda Designer Blog Hop*

Spring 2014



**Parts** — include seam allowance

**Background:**

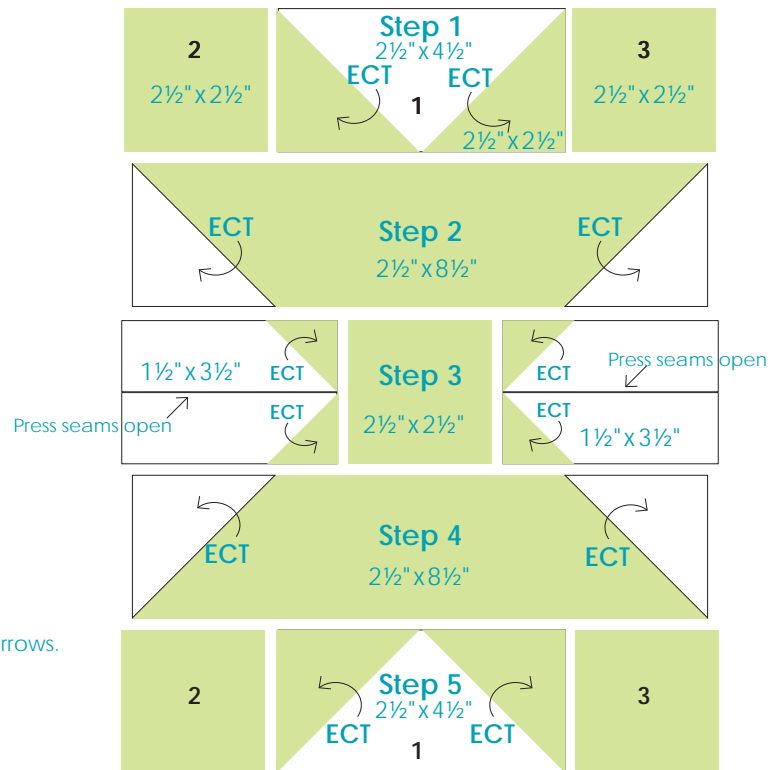
- 2-2½" x 4½"
- 4-2½" x 2½"
- 4-1½" x 3½"

**Print:**

- 2-2½" x 8½"
- 9-2½" x 2½"
- 4-1½" x 1½"

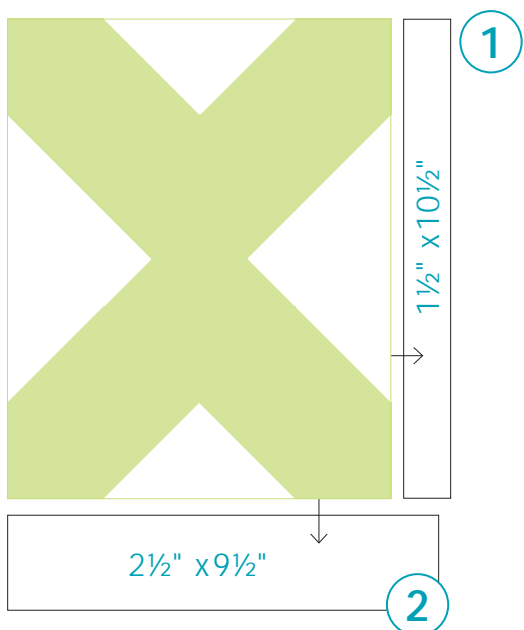
Press toward Print except some ECTs then follow direction of arrows.

\*ECT - Easy Corner Triangles



*moda*

## Block Assembly - Press toward sashings



Each **letter block** finishes at 8"x10"

Add a 1½" x 10½" sashing strip to the right side of each letter. Press toward the sashing. Then add a 2½" x 9½" sashing strip to the bottom of the block. Press toward the sashing.

*See diagram.*

**Both Letter and Pieced blocks should measure 9½" x 12½" with seams.**