

# Moda Spell it with Fabric!

Moda Designer Blog Hop  
Spring 2014



## Parts

### Background:

4-2½" x 4½"

4-2½" x 2½"

### Print:

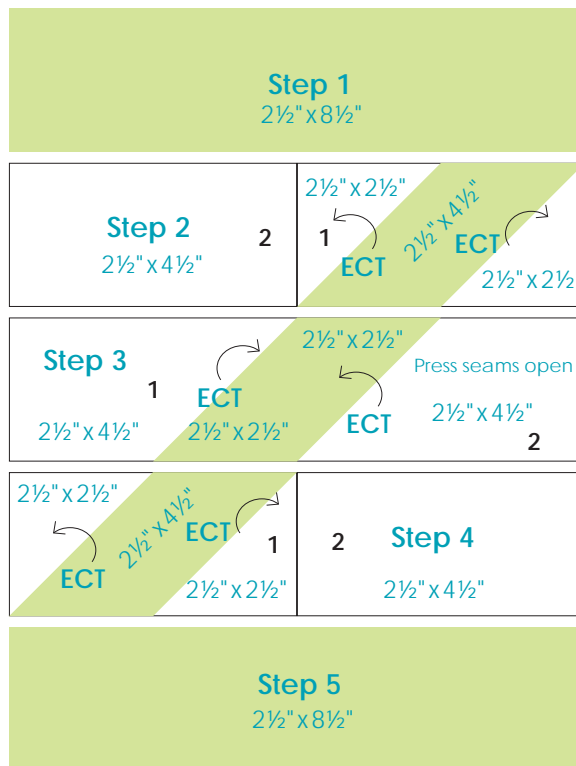
2-2½" x 8½"

2-2½" x 4½"

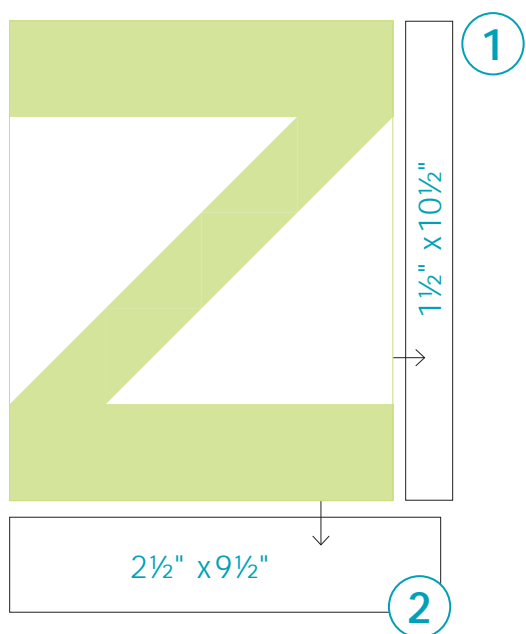
2-2½" x 2½"

Press toward Print except some ECTs then follow direction of arrows.

\*ECT - Easy Corner Triangles



## Block Assembly – Press toward sashings



Each **letter block** finishes at 8" x 10"

Add a 1½" x 10½" sashing strip to the right side of each letter. Press toward the sashing. Then add a 2½" x 9½" sashing strip to the bottom of the block. Press toward the sashing. See diagram.

Both Letter and Pieced blocks should measure 9½" x 12½" with seams.



moda

MODAFABRICS.COM