

La Vie en Rouge

French
General



FG VR002 / FG VR002G
Maison de Bernadette Un
Size: 19" x 23"



FG VR002 / FG VR002G
Maison de Bernadette Deux
Size: 19" x 23"



FG VR002 / FG VR002G
Maison de Bernadette Trois
Size: 18" x 26"

La Vie en Rouge is a classic collection of French reds and antique naturals with a fresh twist on 18th century florals and small prints. We used our collection to design a series of twelve doll quilts that use a variety of different techniques and skill levels. Our good friend, Lorraine Lovell, from Hettie's Patch in Adelaide, South Australia, fell in love with one of our primitive quilts and helped us design La Fleur de Saint Antonin.

Patterns by French General.

More patterns, yardage, and pre-cuts available this **August 2018**.

modafabrics.com

© 2018 moda fabrics • all rights reserved



FG VR005 / FG VR005G La Fleur de Saint Antonin Size: 82" x 82"



FG VR004 / FG VR004G
Maison de Dominique Un
Size: 19" x 23"

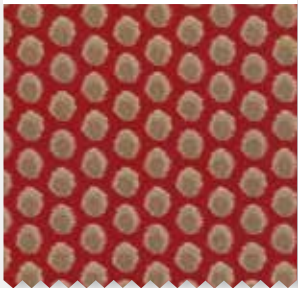


FG VR004 / FG VR004G
Maison de Dominique Deux
Size: 18" x 25"



FG VR004 / FG VR004G
Maison de Dominique Trois
Size: 15" x 21"

13827 11



13825 11



13828 11



13822 13



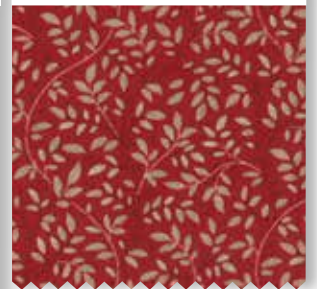
13821 11



13820 16



13824 18



13826 11



La Vie en Rouge French General

13822 15



13529 157



13820 13



13825 15



**FG VR001 /
FG VR001G**
Maison de
Amelie Un
Size: 20" x 24"



**FG VR001 /
FG VR001G**
Maison de
Amelie Deux
Size: 17" x 19"



13821 16



13822 16



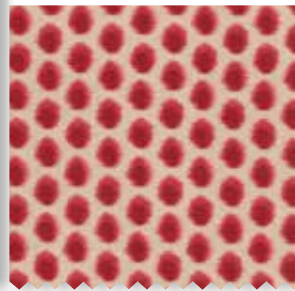
13826 15



13823 15



13827 17



13825 12



13821 13



13823 12



**FG VR001 /
FG VR001G**
Maison de
Amelie Trois
Size: 19" x 21"



13827 18



13820 17



13821 14



13823 16



13826 14



13824 13



13826 19



13822 17



13828 15



13824 17



Carry Overs

13529 22



13529 23



13529 21



FG VR003 / FG VR003G
Maison de Charlotte Un
Size: 15" x 19"



FG VR003 / FG VR003G
Maison de Charlotte Deux
Size: 16" x 21"



FG VR003 / FG VR003G
Maison de Charlotte Trois
Size: 18" x 21"