

BABY JANE

▲ Eric & Julie Comstock

Quilt is 65" x 68".

Fabric Requirements

Blocks:

1 Baby Jane Layer Cake™
(42-10" squares) (37060LC)

3 Accents:

3 Fat Quarters (18" x 22")
(1 each of aqua, red & mustard)
(9900 34, 9900 123, 9900 213)

Background: ½ yard (37061 31)

Sashing: ⅓ yard (9900 60)

Border: 2 yards (37062 11)

Binding: ⅝ yard (37064 12)

Backing: 4⅞ yards

Featuring Baby Jane
by Eric & Julie Comstock
for Moda.

moda
MODAFABRICS.COM

PS37060 — SUGGESTED RETAIL \$6.00



BABY JANE

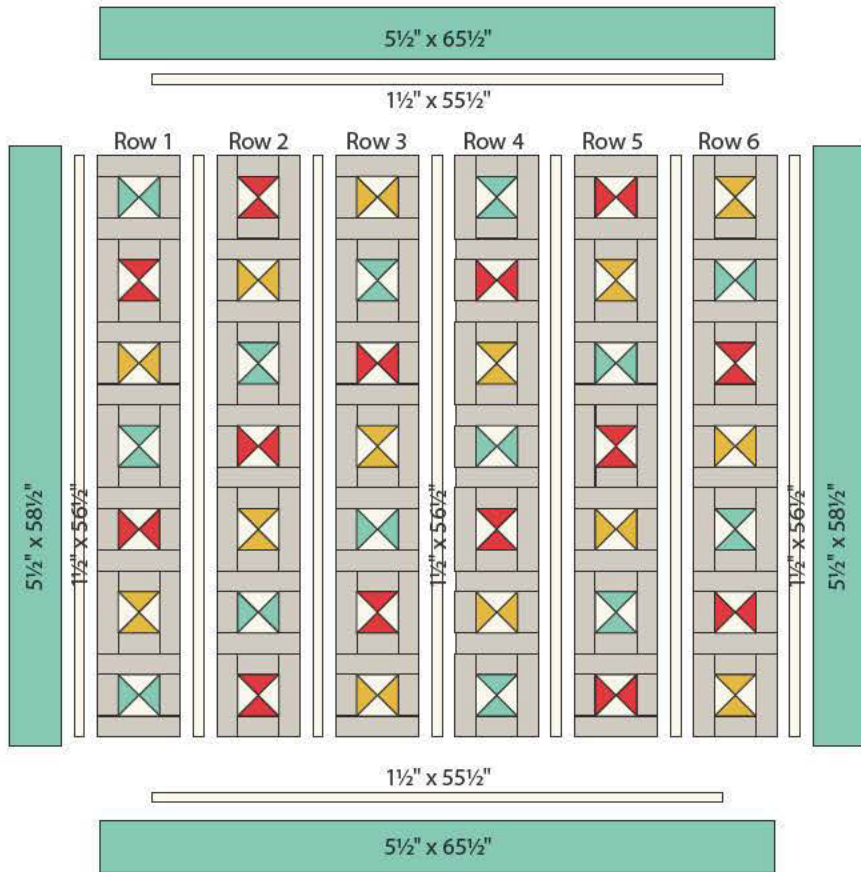
▲ Eric & Julie Comstock™

moda

Quilt is 65" x 68".

3 Assemble the quilt

- Sew the $7\text{-}1\frac{1}{2}" \times 56\frac{1}{2}"$ sashing strips and 6 rows together as shown.
Press away from the sashing strips.
- Sew the $2\text{-}1\frac{1}{2}" \times 55\frac{1}{2}"$ sashing strips to the quilt top and bottom.
Press away from the sashing strips.
- Sew the $2\text{-}5\frac{1}{2}" \times 58\frac{1}{2}"$ border strips to the sides of the quilt.
Press away from the sashing strips.
Sew the $2\text{-}5\frac{1}{2}" \times 65\frac{1}{2}"$ border strips to the top and the bottom.
Press away from the sashing strips.



4 Layer, quilt as desired and bind. ENJOY!

moda

BABY JANE

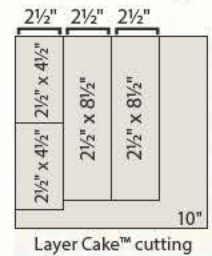
Eric & Julie Comstock

Quilt is $65" \times 68"$.

Cutting

Baby Jane Layer Cake™:

From EACH of the 42-10" squares, cut $2\text{-}2\frac{1}{2}" \times 4\frac{1}{2}"$ and $2\text{-}2\frac{1}{2}" \times 8\frac{1}{2}"$ rectangles to make 1 set of block rectangles. (See diagram.)



Accent:

From EACH of the 3 accent prints, cut $3\text{-}5\frac{1}{4}" \times 22"$ strips

From the strips, cut $7\text{-}5\frac{1}{4}"$ squares
(You now have 7-red, 7-aqua, and 7-mustard squares.)

Block Background:

$3\text{-}5\frac{1}{4}"$ x width of fabric strips

From the strips, cut $21\text{-}5\frac{1}{4}"$ squares

Sashing:

$13\text{-}1\frac{1}{2}"$ x width of fabric strips

Sew the strips end to end.

From this long strip, cut $7\text{-}1\frac{1}{2}" \times 56\frac{1}{2}"$ and $2\text{-}1\frac{1}{2}" \times 55\frac{1}{2}"$ sashing strips.

Borders: (cut lengthwise, parallel to the selvage)

$2\text{-}5\frac{1}{2}" \times 65\frac{1}{2}"$ strips

$2\text{-}5\frac{1}{2}" \times 58\frac{1}{2}"$ strips

Binding:

$7\text{-}2\frac{1}{2}"$ x width of fabric strips

Sew the 7 strips end to end using a diagonal seam to make the binding.

moda

Construction

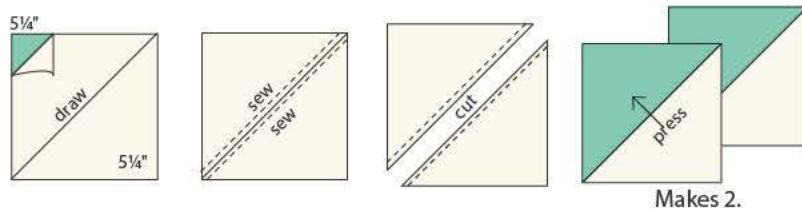
Use $\frac{1}{4}$ " seams and press in the direction of the arrows.

There are 42 blocks, 14 have a aqua accent, 14 have a red accent, and 14 have a mustard accent. You will make 2 blocks at a time.

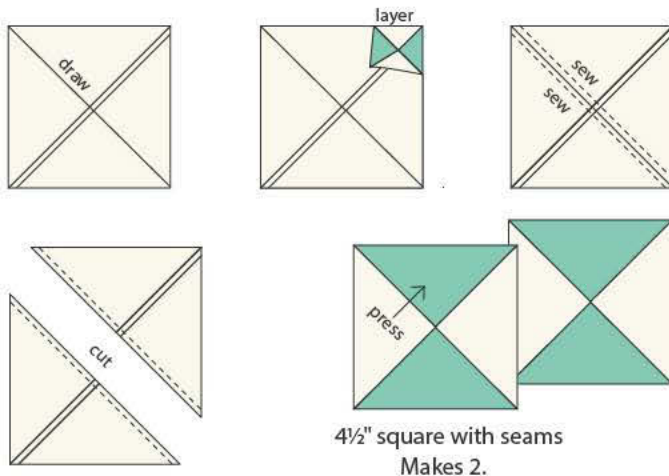
- 1** Select: 1- $5\frac{1}{4}$ " accent square
 1- $5\frac{1}{4}$ " background square
 2 sets of block rectangles

moda

- (A) Draw a diagonal line, from corner to corner, on the wrong side of the $5\frac{1}{4}$ " background square. Layer the accent and background squares right sides together. Sew a $\frac{1}{4}$ " from each side of the diagonal line. Cut on the drawn line. Press open toward the accent triangle to make 2 half square triangle units.

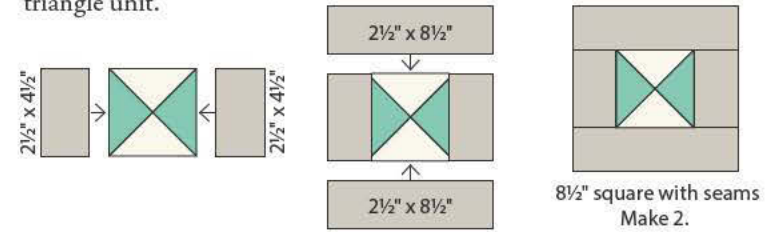


- (B) Draw a diagonal line, from corner to corner, on the wrong side of one of the half square triangle units as shown. Layer the 2 half square triangle units, with opposite prints right sides together. Sew a $\frac{1}{4}$ " from each side of the diagonal line. Cut on the drawn line. Press open to make 2 quarter square triangle units.



Step 1 continued.

- (C) Sew 1 set of block rectangles to one of the quarter square triangle units as shown. Sew the second set of block rectangles to the other quarter square triangle unit.



- Repeat to make a total of 42 blocks: 14 with a aqua accent
 14 with a red accent
 14 with a mustard accent.

moda

- 2** Sew 7 blocks together to make one vertical row. Rotate every other block 90° and note the placement of the accent colors. Make 6 rows.

