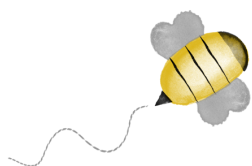


BEE-UTIFUL QUILT-A-LONG

by Pamela Morgan
of Sweet Little Stitches
for Moda Bake Shop



BLOCK 1 - BEE CURIOUS

All steps use 3 strands of floss unless otherwise specified.

Stitches are denoted in *italics*. Colors of thread are in ALL CAPS.

INGREDIENTS

- 10 ½" Square Background Fabric
- Various Shades of Six-Strand Embroidery Floss
- 4" or 5" Embroidery Hoop
- Hand Embroidery Needles
- Frixion or other erasable thin-lined fabric pen

Step 1: Trace block design on to background fabric using desired method.

Step 2: For the cat's body, *backstitch* using BLACK embroidery floss. Also using BLACK floss, continue to the cat's tail, using a *stem stitch*.

Step 3: *Satin stitch* the cat's eyes using LIGHT GREEN floss.

Step 4: Using a LIGHT DUSTY PINK, *backstitch* the cat's inner ears. Then, still using a *backstitch*, complete the cat's nose.

Step 5: With a LIGHT GRAY, *backstitch* both the cat's whiskers and the bee's wings.

Step 6: Complete the bee's flight path using a *running stitch* in a VERY LIGHT GRAY floss.

Step 7: *Satin stitch* the flower centers using a DARK WARM BROWN.

Step 8: Using a GOLDEN YELLOW floss, *backstitch* the flower petals.

Step 9: Using the same GOLDEN YELLOW floss, *satin stitch* the bee's body.

Step 10: With BLACK floss, *satin stitch* the bee's head and tail. Then use one long *running stitch* for each of the bee's stripes.

Step 11: With an AVOCADO colored floss, *stem stitch* the flowers' stems. Then complete the leaves using a *backstitch*.

Step 12: Remove block from hoop and press with hot iron under pressing cloth or fluffy towel. Trim to 8 ½" square. If desired, machine topstitch a scant 1/8" around all sides to keep from unraveling while working on other blocks.

