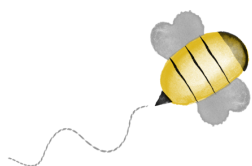


BEE-UTIFUL QUILT-A-LONG

by Pamela Morgan
of Sweet Little Stitches
for Moda Bake Shop



BLOCK 2 - BEE PRODUCTIVE

All steps use 3 strands of floss unless otherwise specified.

Stitches are denoted in *italics*. Colors of thread are in ALL CAPS.

INGREDIENTS

- 10 1/2" Square Background Fabric
- 6 Scraps hand-dyed wool, approximately 2 1/2" each
- Various shades of six-strand embroidery floss
- 4" or 5" Embroidery Hoop
- Hand Embroidery Needles
- Frixion or other erasable thin-lined fabric pen

Step 1: Trace block design on to background fabric using desired method.

Step 2: Trace hexagon shapes onto freezer paper. Press freezer paper shapes onto wool using a hot, dry iron. Cut out wool shapes, then peel freezer paper from back. Glue baste to background fabric.

Step 3: Attach hexagons using either a hand or machine *blanket stitch* in BLACK.

Step 4: Using GOLDEN YELLOW floss, *satin stitch* the bee's body between the stripes.

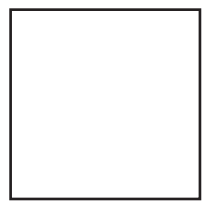
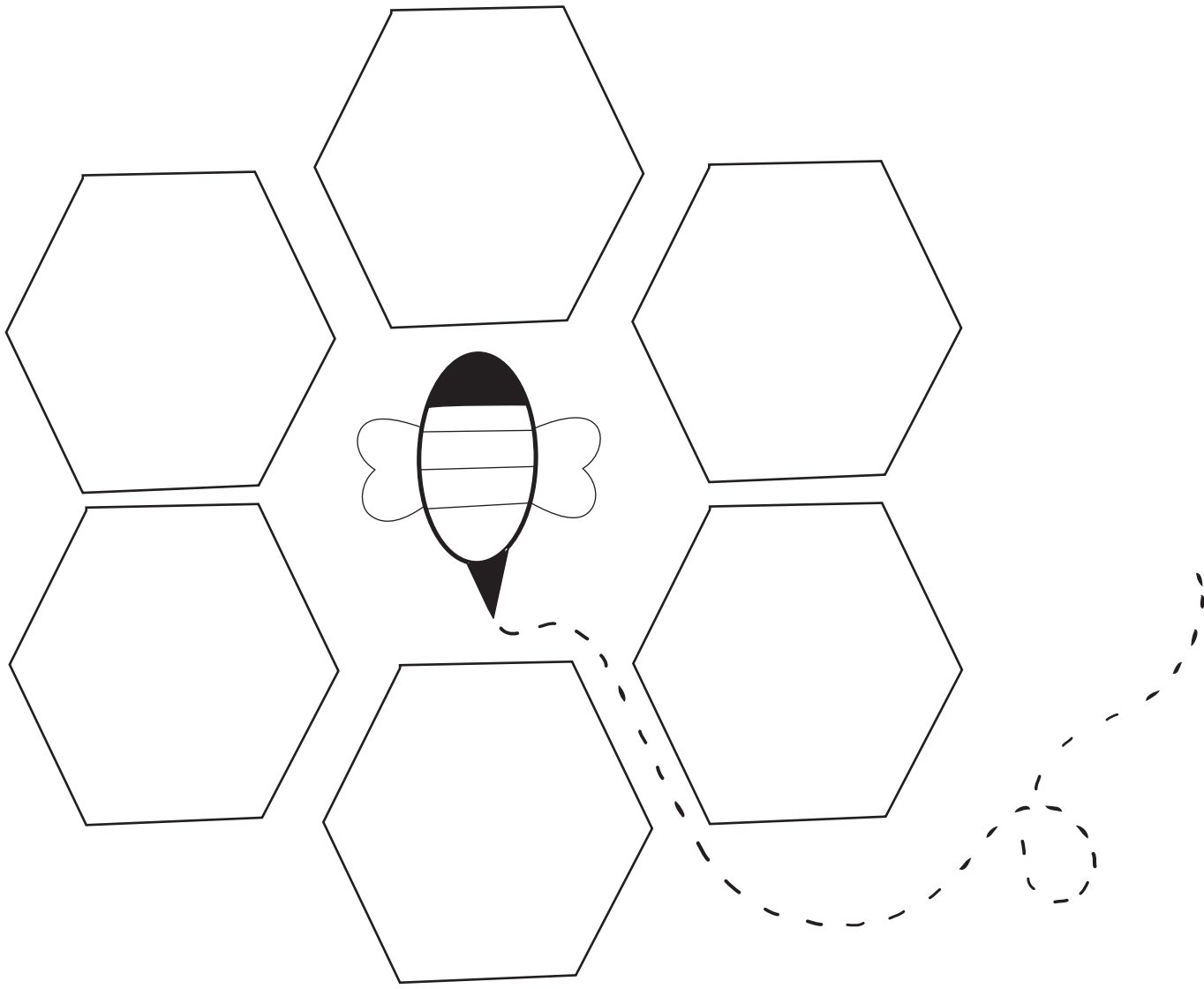
Step 5: With BLACK floss, fill the bee's head with *french knots*. Wrap thread around the needle 4 turns for each knot.

Step 6: Still using the BLACK floss, *backstitch* each of the bee's stripes, and then *satin stitch* the stinger.

Step 7: With LIGHT GRAY floss, outline the bee's wings with a *chain stitch*. Then fill in using a long, diagonal, spaced *satin stitch*.

Step 8: Using a *running stitch* and VERY LIGHT GRAY floss, complete the bee's flight path.

Step 9: Remove block from hoop and press with hot iron under pressing cloth or fluffy towel. Trim to 8 1/2" square. If desired, machine topstitch a scant 1/8" around all sides to keep from unraveling while working on other blocks.



1 INCH
Do not print to
scale.