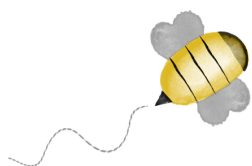


BEE-UTIFUL QUILT-A-LONG

by Pamela Morgan
of Sweet Little Stitches
for Moda Bake Shop



BLOCK 3 - BEE LOVELY

All steps use 3 strands of floss unless otherwise specified.

Stitches are denoted in *italics*. Colors of thread are in ALL CAPS.

INGREDIENTS

- 10 ½" Square Background Fabric
- Various shades of six-strand embroidery floss
- 4" or 5" Embroidery Hoop
- Hand Embroidery Needles
- Frixion or other erasable thin-lined fabric pen

Step 1: Trace block design on to background fabric using desired method.

Step 2: Using an **AVOCADO GREEN** colored floss, *backstitch* the stem and leaves of the bluebells.

Step 3: Then switch to a **PERIWINKLE BLUE** floss, and *satin stitch* the bells of the bluebells.

Step 4: Using **GOLDEN YELLOW** floss, *satin stitch* the center of the bluebells, the center of the round flower, the bees' bodies, and the ends of the tulip.

Step 5: With **BLACK** floss, *satin stitch* the bees' heads, stripes, and stingers.

Step 6: With **LIGHT GRAY** floss, outline the bees'

wings with a *backstitch*.

Step 7: Using a *running stitch* and **VERY LIGHT GRAY** floss, complete the bees' flight paths.

Step 8: Starting at the center, completely fill in the circle flower with a continuous *chain stitch* using **MEDIUM PINK** floss.

Step 9: Using **AVOCADO GREEN** floss, *stem stitch* the rest of the flowers' stems, as well as the "antennae" on the tulip. Then *backstitch* the rest of the leaves.

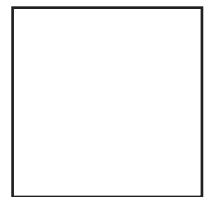
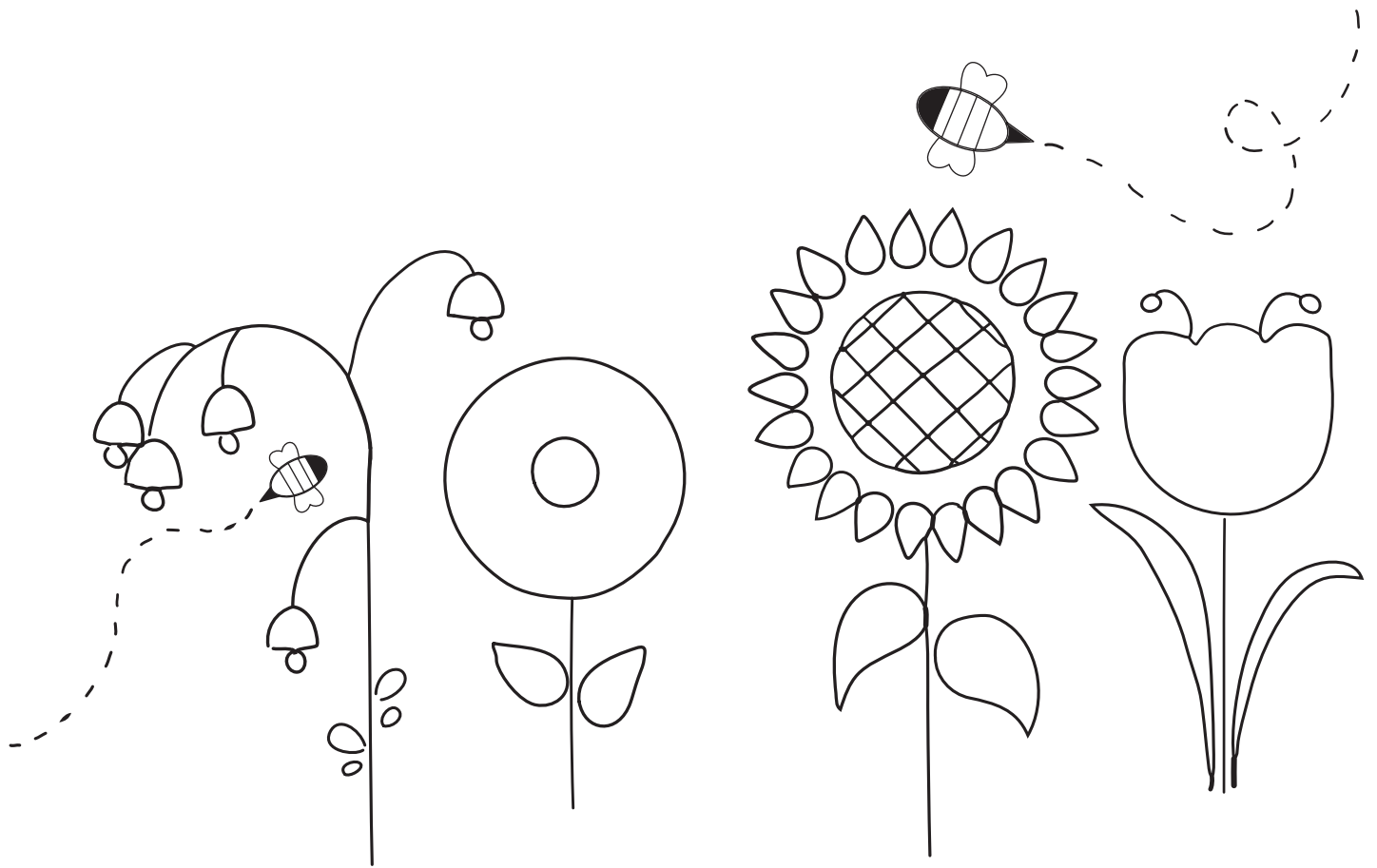
Step 10: *Backstitch* the sunflower petals using **GOLDEN YELLOW** floss.

(Note: For the step, I used three different shades of yellow floss. Feel free to experiment to find a combination that works for you!)

Step 11: With **DARK BROWN** floss, follow the outline of the sunflower center with *French knots*. Then trace the cross-hatching inside with a *backstitch*.

Step 12: Complete the outline of the tulip with **MEDIUM PURPLE** floss using a *chain stitch*.

Step 13: Remove block from hoop and press with hot iron under pressing cloth or fluffy towel. Trim to 8 ½" square. If desired, machine topstitch a scant 1/8" around all sides to keep from unraveling while working on other blocks.



1 INCH
Do not print to
scale.