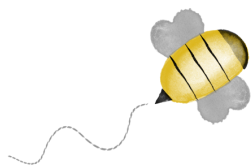


BEE-UTIFUL QUILT-A-LONG

by Pamela Morgan
of Sweet Little Stitches
for Moda Bake Shop



BLOCK 4 - BEE HUMBLE

All steps use 3 strands of floss unless otherwise specified.

Stitches are denoted in *italics*. Colors of thread are in ALL CAPS.

INGREDIENTS

- 10 ½" Square Background Fabric
- Various shades of six-strand embroidery floss
- 4" or 5" Embroidery Hoop
- Hand Embroidery Needles
- Frixion or other erasable thin-lined fabric pen

Step 1: Trace block design on to background fabric using desired method.

Step 2: Using a variegated **GREEN** floss, complete the leaves on the tree using a *lazy daisy stitch*.

Step 3: With **DARK BROWN** floss, *backstitch* the trunk and branches of the tree. Then, using the same color floss, *satin stitch* the center of the flower atop the beehive.

Step 4: Using **GOLDEN YELLOW** floss, *satin stitch* the bees' bodies. Then switch to a *lazy daisy stitch*, and make the petals of the daisy on top of the beehive.

Step 5: With **BLACK** floss, *satin stitch* the bees' heads, stripes, and stingers. Also *satin stitch* the

entrance to the hive.

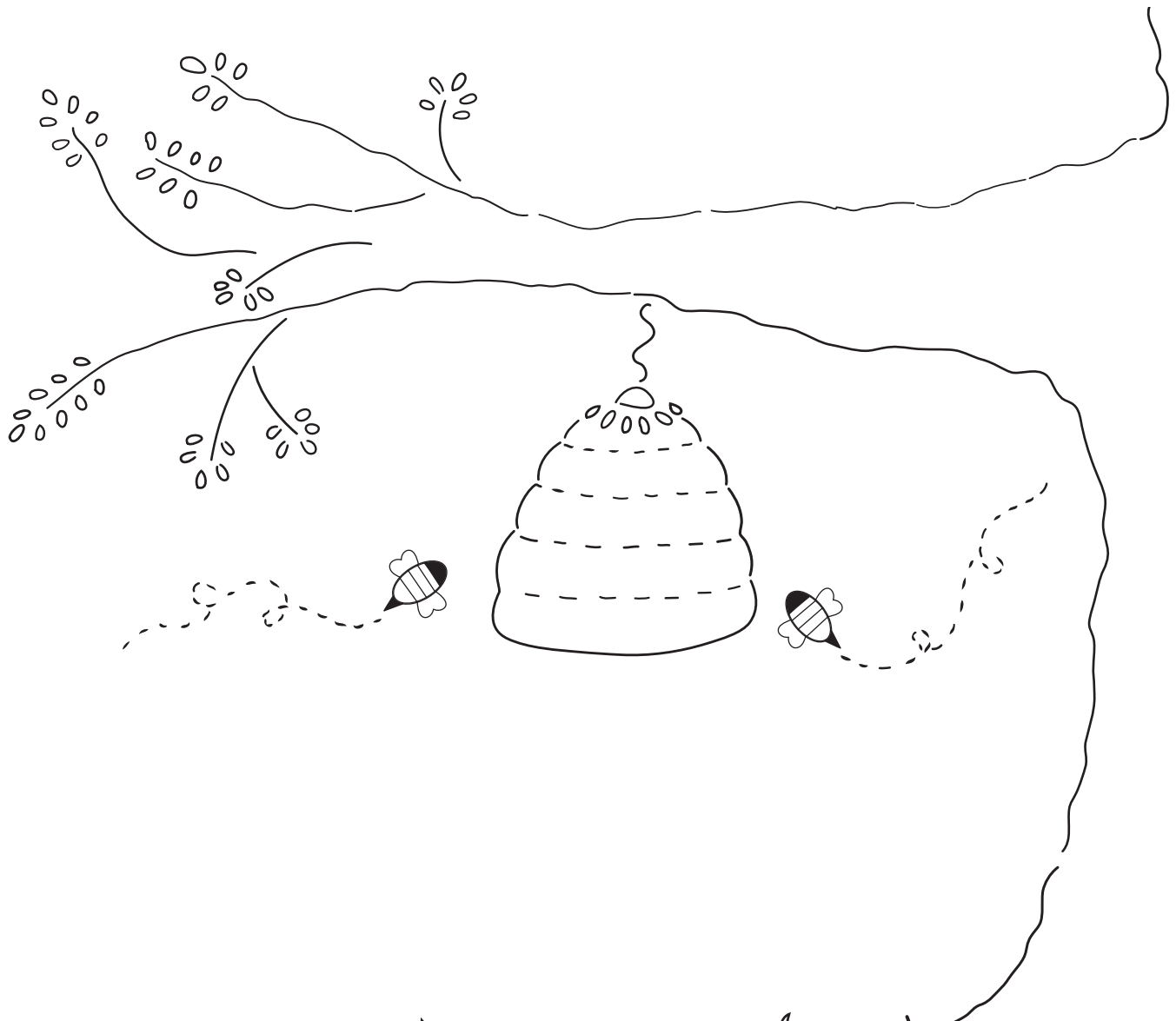
Step 6: With **LIGHT GRAY** floss, use a *lazy daisy stitch* for the bees' wings.

Step 7: Using a *running stitch* and **VERY LIGHT GRAY** floss, complete the bees' flight paths.

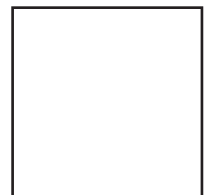
Step 8: Then complete the grass and the small vine holding the hive using a *backstitch* and **AVOCADO GREEN** floss.

Step 9: With a **LIGHT BROWN** floss, *backstitch* the outline of the hive. Then use a *running stitch* for the "folds" in the hive.

Step 10: Remove block from hoop and press with hot iron under pressing cloth or fluffy towel. Trim to 8 ½" square. If desired, machine topstitch a scant 1/8" around all sides to keep from unraveling while working on other blocks.



Hand-drawn illustration of a beehive and bees in a garden setting.



1 INCH
Do not print to
scale.