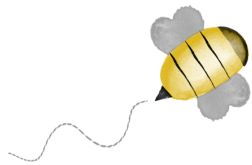


BEE-UTIFUL QUILT-A-LONG

by Pamela Morgan
of Sweet Little Stitches
for Moda Bake Shop



BLOCK 6 - BEE SWEET

All steps use 3 strands of floss unless otherwise specified.

Stitches are denoted in *italics*. Colors of thread are in ALL CAPS.

INGREDIENTS

- 10 ½" Square Background Fabric
- Various shades of six-strand embroidery floss
- 4" or 5" Embroidery Hoop
- Hand Embroidery Needles
- Frixion or other erasable thin-lined fabric pen

Step 1: With **MEDIUM RED** floss, *backstitch* the outline of the strawberry.

Step 2: Using **GOLDEN YELLOW** floss, *satin stitch* the bee's body and the center of the flower. Then use a *running stitch* to complete the seeds of the strawberry.

Step 3: With **BLACK** floss, *satin stitch* the bee's head, stripes, and stinger.

Step 4: With **LIGHT GRAY** floss, use a *backstitch* for the bee's wings.

Step 5: Using a *running stitch* and **VERY LIGHT GRAY** floss, complete the bee's flight path.

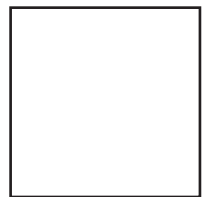
Step 6: Use a **PALE PINK** floss, and a *backstitch* to outline both layers of the cake.

Step 7: *Backstitch* the outline of the cake stand using **BLACK** floss.

Step 8: Using a **PALE YELLOW** floss, outline the flower petals with a *backstitch*.

Step 9: *Backstitch* the leaves of the strawberry and the flower using **AVOCADO GREEN** floss, and then use a *running stitch* for the vein of the flower's leaf.

Step 10: Remove block from hoop and press with hot iron under pressing cloth or fluffy towel. Trim to 8 ½" square. If desired, machine topstitch a scant 1/8" around all sides to keep from unraveling while working on other blocks.



1 INCH
Do not print to
scale.