

# moda BAKE SHOP



## Moderate

Hello there! Since I'm a new Moda Bake Shop Chef, I'd like to introduce myself. I'm Pamela Morgan, from [Sweet Little Stitches](#). I'm the designer of the Bee-utiful Quilt-a-long for the Summer Sewing Camp. The quilt-a-long features twenty of my original embroidery designs, and each block has one (or more) adorable little bee! The best part about this quilt is that it's charm pack friendly. The Bee-utiful quilt finishes at 58" x 70". Each block measures 10" finished.

6/9/2016

Original Recipe can be found at [www.modabakeshop.com](http://www.modabakeshop.com)

Recipes are sometimes altered to correct errors. Please ensure that you have downloaded the most recent Printer Friendly Version before starting your project. If you find a mistake in this pattern, please contact [modabakeshop@unitednotions.com](mailto:modabakeshop@unitednotions.com).

This is an original pattern not intended for sale.

## Ingredients:

*{for the quilt}*

1 5/8 yd Bleached White Bella Solid (For embroidery foundation)  
1 charm pack or 4 mini charm packs (I used Bee Creative by Deb Strain) (sashing)  
1 yd cream handwriting print (Block border)  
½ yard tonal honeycomb print (inner border)  
1 1/4 yd large black floral (outer border)  
4 yards backing fabric  
5/8 yd Black Bella Solid (binding)  
Various colors six-strand embroidery floss  
Small scraps coordinating hand-dyed wool or coordinating cotton scraps for appliqué (optional)  
4" and 5" embroidery hoop  
Stabilizer (optional)

## Instructions:

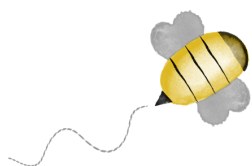
### CUTTING

Take your white Bella Solid and cut 5 strips 10½" x WOF. Subcut each strips into (4) 10½" squares.

Trace and embroider blocks as described on the following pages.

# BEE-UTIFUL QUILT-A-LONG

by Pamela Morgan  
of Sweet Little Stitches  
for Moda Bake Shop



## BLOCK 1 - BEE CURIOUS

All steps use 3 strands of floss unless otherwise specified.

Stitches are denoted in *italics*. Colors of thread are in ALL CAPS.

### INGREDIENTS

- 10 ½" Square Background Fabric
- Various Shades of Six-Strand Embroidery Floss
- 4" or 5" Embroidery Hoop
- Hand Embroidery Needles
- Frixion or other erasable thin-lined fabric pen

Step 1: Trace block design on to background fabric using desired method.

Step 2: For the cat's body, *backstitch* using BLACK embroidery floss. Also using BLACK floss, continue to the cat's tail, using a *stem stitch*.

Step 3: *Satin stitch* the cat's eyes using LIGHT GREEN floss.

Step 4: Using a LIGHT DUSTY PINK, *backstitch* the cat's inner ears. Then, still using a *backstitch*, complete the cat's nose.

Step 5: With a LIGHT GRAY, *backstitch* both the cat's whiskers and the bee's wings.

Step 6: Complete the bee's flight path using a *running stitch* in a VERY LIGHT GRAY floss.

Step 7: *Satin stitch* the flower centers using a DARK WARM BROWN.

Step 8: Using a GOLDEN YELLOW floss, *backstitch* the flower petals.

Step 9: Using the same GOLDEN YELLOW floss, *satin stitch* the bee's body.

Step 10: With BLACK floss, *satin stitch* the bee's head and tail. Then use one long *running stitch* for each of the bee's stripes.

Step 11: With an AVOCADO colored floss, *stem stitch* the flowers' stems. Then complete the leaves using a *backstitch*.

Step 12: Remove block from hoop and press with hot iron under pressing cloth or fluffy towel. Trim to 8 ½" square. If desired, machine topstitch a scant 1/8" around all sides to keep from unraveling while working on other blocks.

