

moda BAKE SHOP



Moderate

Hello there! Since I'm a new Moda Bake Shop Chef, I'd like to introduce myself. I'm Pamela Morgan, from [Sweet Little Stitches](#). I'm the designer of the Bee-utiful Quilt-a-long for the Summer Sewing Camp. The quilt-a-long features twenty of my original embroidery designs, and each block has one (or more) adorable little bee! The best part about this quilt is that it's charm pack friendly. The Bee-utiful quilt finishes at 58" x 70". Each block measures 10" finished.

6/9/2016

Original Recipe can be found at www.modabakeshop.com

Recipes are sometimes altered to correct errors. Please ensure that you have downloaded the most recent Printer Friendly Version before starting your project. If you find a mistake in this pattern, please contact modabakeshop@unitednotions.com.

This is an original pattern not intended for sale.

Ingredients:

{for the quilt}

- 1 5/8 yd Bleached White Bella Solid (For embroidery foundation)
- 1 charm pack or 4 mini charm packs (I used Bee Creative by Deb Strain) (sashing)
- 1 yd cream handwriting print (Block border)
- ½ yard tonal honeycomb print (inner border)
- 1 1/4 yd large black floral (outer border)
- 4 yards backing fabric
- 5/8 yd Black Bella Solid (binding)
- Various colors six-strand embroidery floss
- Small scraps coordinating hand-dyed wool or coordinating cotton scraps for appliqué (optional)
- 4" and 5" embroidery hoop
- Stabilizer (optional)

Instructions:

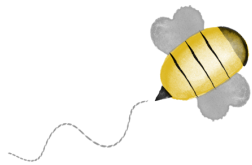
CUTTING

Take your white Bella Solid and cut 5 strips 10½" x WOF. Subcut each strips into (4) 10½" squares.

Trace and embroider blocks as described on the following pages.

BEE-UTIFUL QUILT-A-LONG

by Pamela Morgan
of Sweet Little Stitches
for Moda Bake Shop



BLOCK 1 - BEE CURIOUS

All steps use 3 strands of floss unless otherwise specified.

Stitches are denoted in *italics*. Colors of thread are in ALL CAPS.

INGREDIENTS

- 10 ½" Square Background Fabric
- Various Shades of Six-Strand Embroidery Floss
- 4" or 5" Embroidery Hoop
- Hand Embroidery Needles
- Frixion or other erasable thin-lined fabric pen

Step 1: Trace block design on to background fabric using desired method.

Step 2: For the cat's body, *backstitch* using BLACK embroidery floss. Also using BLACK floss, continue to the cat's tail, using a *stem stitch*.

Step 3: *Satin stitch* the cat's eyes using LIGHT GREEN floss.

Step 4: Using a LIGHT DUSTY PINK, *backstitch* the cat's inner ears. Then, still using a *backstitch*, complete the cat's nose.

Step 5: With a LIGHT GRAY, *backstitch* both the cat's whiskers and the bee's wings.

Step 6: Complete the bee's flight path using a *running stitch* in a VERY LIGHT GRAY floss.

Step 7: *Satin stitch* the flower centers using a DARK WARM BROWN.

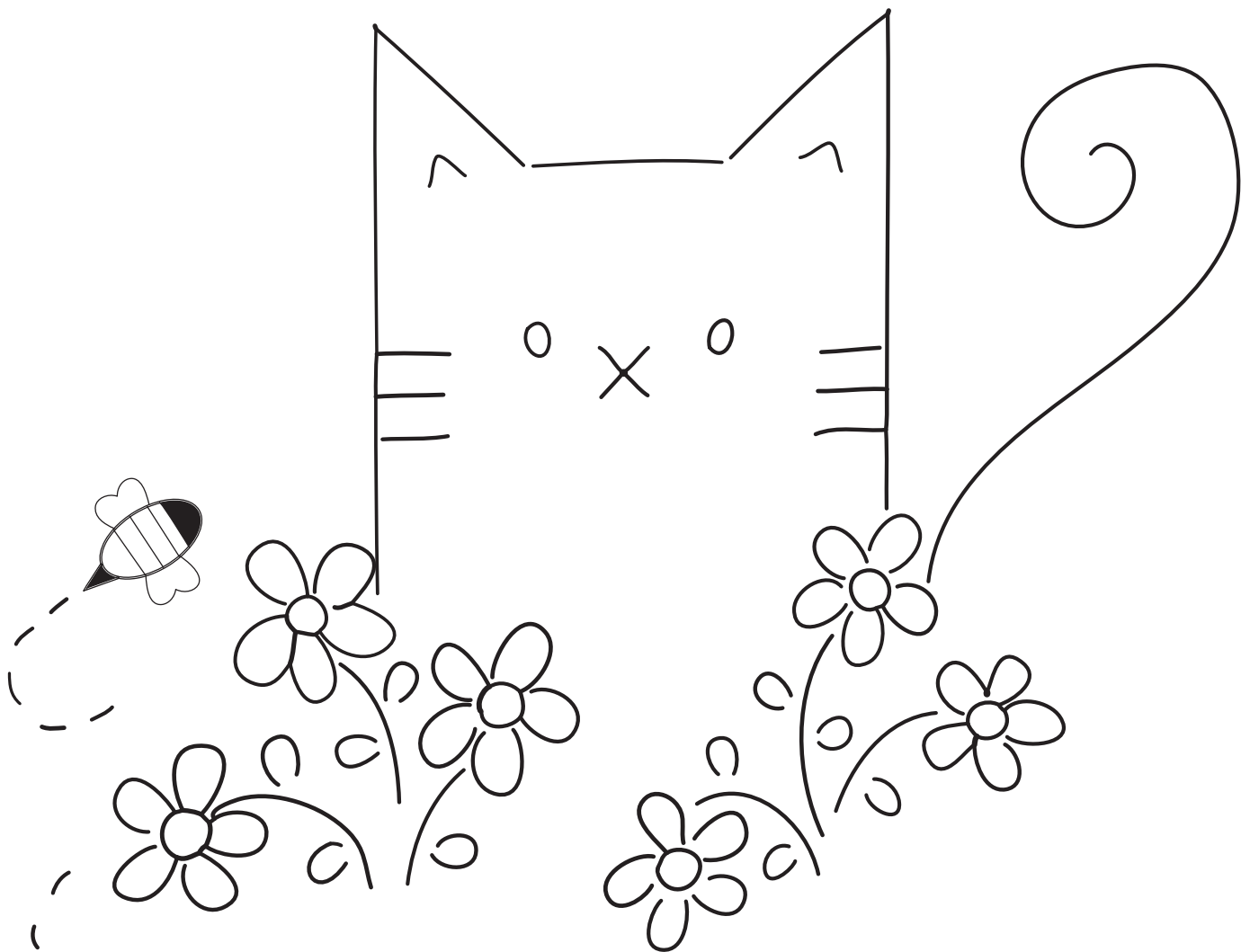
Step 8: Using a GOLDEN YELLOW floss, *backstitch* the flower petals.

Step 9: Using the same GOLDEN YELLOW floss, *satin stitch* the bee's body.

Step 10: With BLACK floss, *satin stitch* the bee's head and tail. Then use one long *running stitch* for each of the bee's stripes.

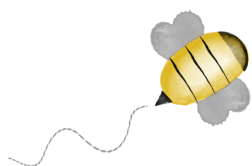
Step 11: With an AVOCADO colored floss, *stem stitch* the flowers' stems. Then complete the leaves using a *backstitch*.

Step 12: Remove block from hoop and press with hot iron under pressing cloth or fluffy towel. Trim to 8 ½" square. If desired, machine topstich a scant 1/8" around all sides to keep from unraveling while working on other blocks.



BEE-UTIFUL QUILT-A-LONG

by Pamela Morgan
of Sweet Little Stitches
for Moda Bake Shop



BLOCK 2 - BEE PRODUCTIVE

All steps use 3 strands of floss unless otherwise specified.

Stitches are denoted in *italics*. Colors of thread are in ALL CAPS.

INGREDIENTS

- 10 1/2" Square Background Fabric
- 6 Scraps hand-dyed wool, approximately 2 1/2" each
- Various shades of six-strand embroidery floss
- 4" or 5" Embroidery Hoop
- Hand Embroidery Needles
- Frixion or other erasable thin-lined fabric pen

Step 1: Trace block design on to background fabric using desired method.

Step 2: Trace hexagon shapes onto freezer paper. Press freezer paper shapes onto wool using a hot, dry iron. Cut out wool shapes, then peel freezer paper from back. Glue baste to background fabric.

Step 3: Attach hexagons using either a hand or machine *blanket stitch* in BLACK.

Step 4: Using GOLDEN YELLOW floss, *satin stitch* the bee's body between the stripes.

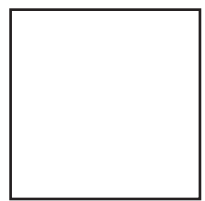
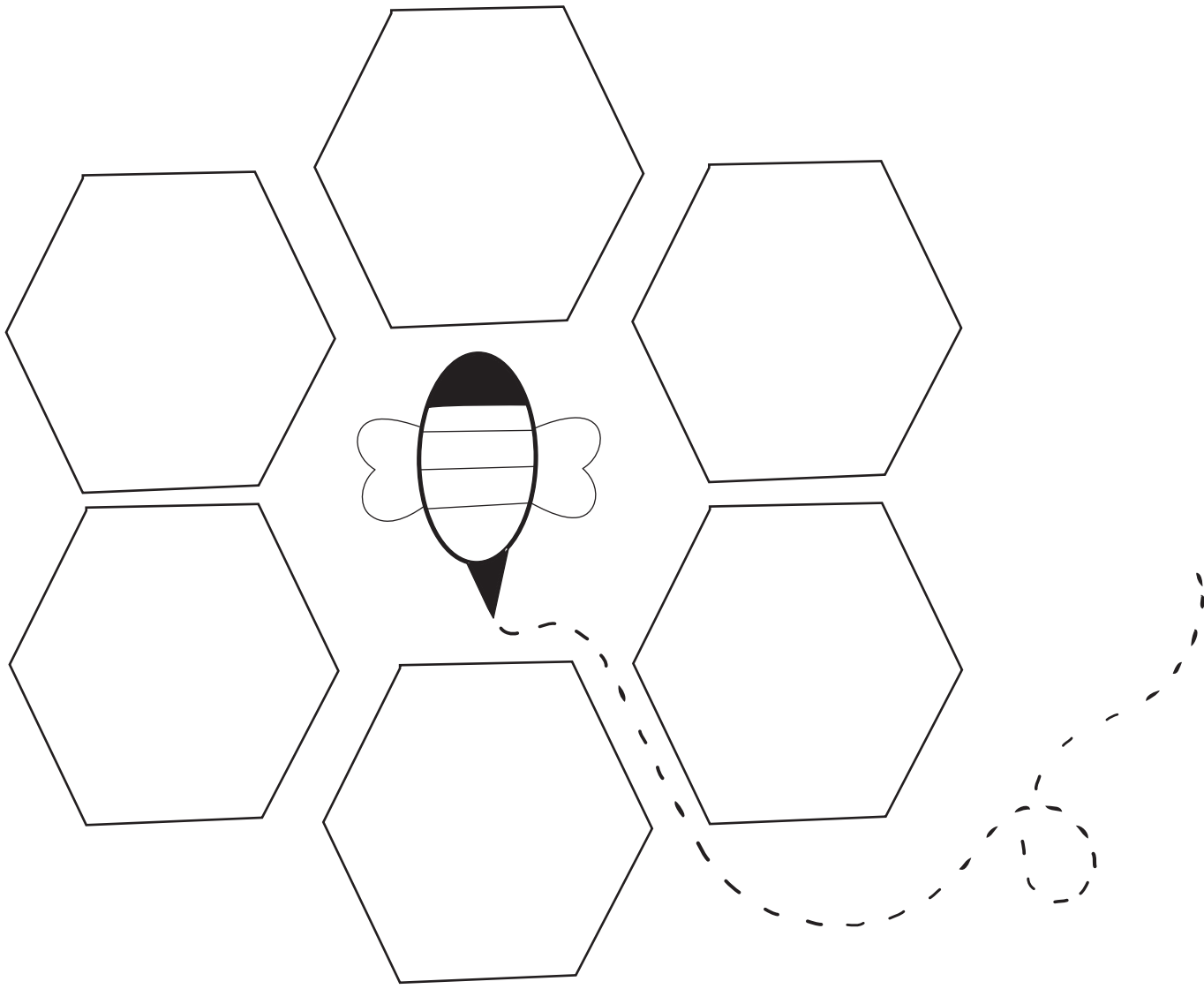
Step 5: With BLACK floss, fill the bee's head with *french knots*. Wrap thread around the needle 4 turns for each knot.

Step 6: Still using the BLACK floss, *backstitch* each of the bee's stripes, and then *satin stitch* the stinger.

Step 7: With LIGHT GRAY floss, outline the bee's wings with a *chain stitch*. Then fill in using a long, diagonal, spaced *satin stitch*.

Step 8: Using a *running stitch* and VERY LIGHT GRAY floss, complete the bee's flight path.

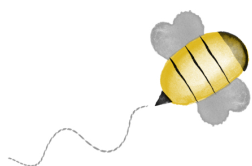
Step 9: Remove block from hoop and press with hot iron under pressing cloth or fluffy towel. Trim to 8 1/2" square. If desired, machine topstitch a scant 1/8" around all sides to keep from unraveling while working on other blocks.



1 INCH
Do not print to
scale.

BEE-UTIFUL QUILT-A-LONG

by Pamela Morgan
of Sweet Little Stitches
for Moda Bake Shop



BLOCK 3 - BEE LOVELY

All steps use 3 strands of floss unless otherwise specified.

Stitches are denoted in *italics*. Colors of thread are in ALL CAPS.

INGREDIENTS

- 10 ½" Square Background Fabric
- Various shades of six-strand embroidery floss
- 4" or 5" Embroidery Hoop
- Hand Embroidery Needles
- Frixion or other erasable thin-lined fabric pen

Step 1: Trace block design on to background fabric using desired method.

Step 2: Using an **AVOCADO GREEN** colored floss, *backstitch* the stem and leaves of the bluebells.

Step 3: Then switch to a **PERIWINKLE BLUE** floss, and *satin stitch* the bells of the bluebells.

Step 4: Using **GOLDEN YELLOW** floss, *satin stitch* the center of the bluebells, the center of the round flower, the bees' bodies, and the ends of the tulip.

Step 5: With **BLACK** floss, *satin stitch* the bees' heads, stripes, and stingers.

Step 6: With **LIGHT GRAY** floss, outline the bees'

wings with a *backstitch*.

Step 7: Using a *running stitch* and **VERY LIGHT GRAY** floss, complete the bees' flight paths.

Step 8: Starting at the center, completely fill in the circle flower with a continuous *chain stitch* using **MEDIUM PINK** floss.

Step 9: Using **AVOCADO GREEN** floss, *stem stitch* the rest of the flowers' stems, as well as the "antennae" on the tulip. Then *backstitch* the rest of the leaves.

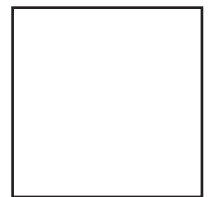
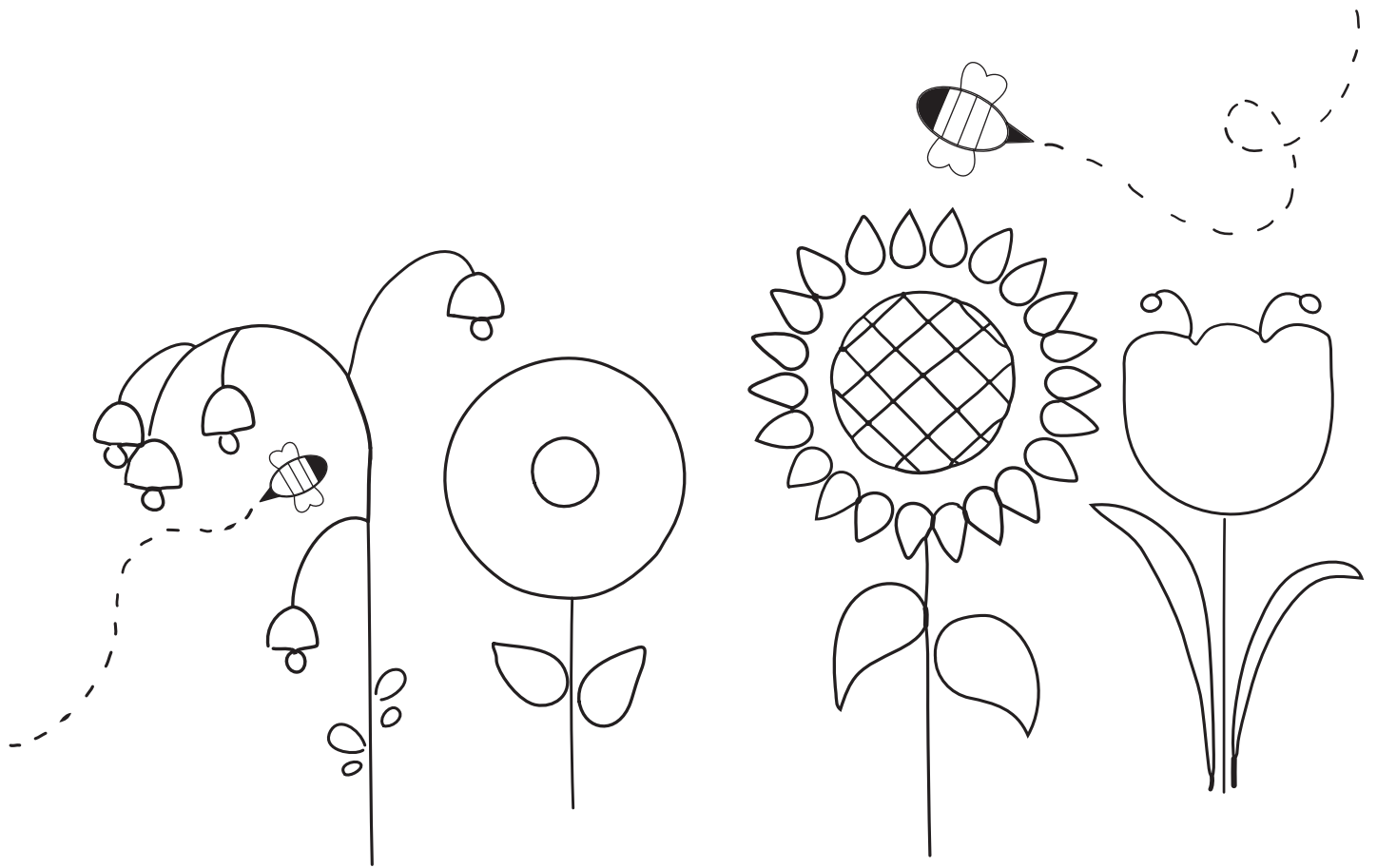
Step 10: *Backstitch* the sunflower petals using **GOLDEN YELLOW** floss.

(Note: For the step, I used three different shades of yellow floss. Feel free to experiment to find a combination that works for you!)

Step 11: With **DARK BROWN** floss, follow the outline of the sunflower center with *French knots*. Then trace the cross-hatching inside with a *backstitch*.

Step 12: Complete the outline of the tulip with **MEDIUM PURPLE** floss using a *chain stitch*.

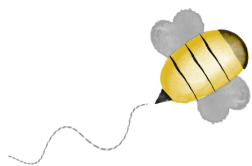
Step 13: Remove block from hoop and press with hot iron under pressing cloth or fluffy towel. Trim to 8 ½" square. If desired, machine topstich a scant 1/8" around all sides to keep from unraveling while working on other blocks.



1 INCH
Do not print to
scale.

BEE-UTIFUL QUILT-A-LONG

by Pamela Morgan
of Sweet Little Stitches
for Moda Bake Shop



BLOCK 4 - BEE HUMBLE

All steps use 3 strands of floss unless otherwise specified.

Stitches are denoted in *italics*. Colors of thread are in ALL CAPS.

INGREDIENTS

- 10 ½" Square Background Fabric
- Various shades of six-strand embroidery floss
- 4" or 5" Embroidery Hoop
- Hand Embroidery Needles
- Frixion or other erasable thin-lined fabric pen

Step 1: Trace block design on to background fabric using desired method.

Step 2: Using a variegated **GREEN** floss, complete the leaves on the tree using a *lazy daisy stitch*.

Step 3: With **DARK BROWN** floss, *backstitch* the trunk and branches of the tree. Then, using the same color floss, *satin stitch* the center of the flower atop the beehive.

Step 4: Using **GOLDEN YELLOW** floss, *satin stitch* the bees' bodies. Then switch to a *lazy daisy stitch*, and make the petals of the daisy on top of the beehive.

Step 5: With **BLACK** floss, *satin stitch* the bees' heads, stripes, and stingers. Also *satin stitch* the

entrance to the hive.

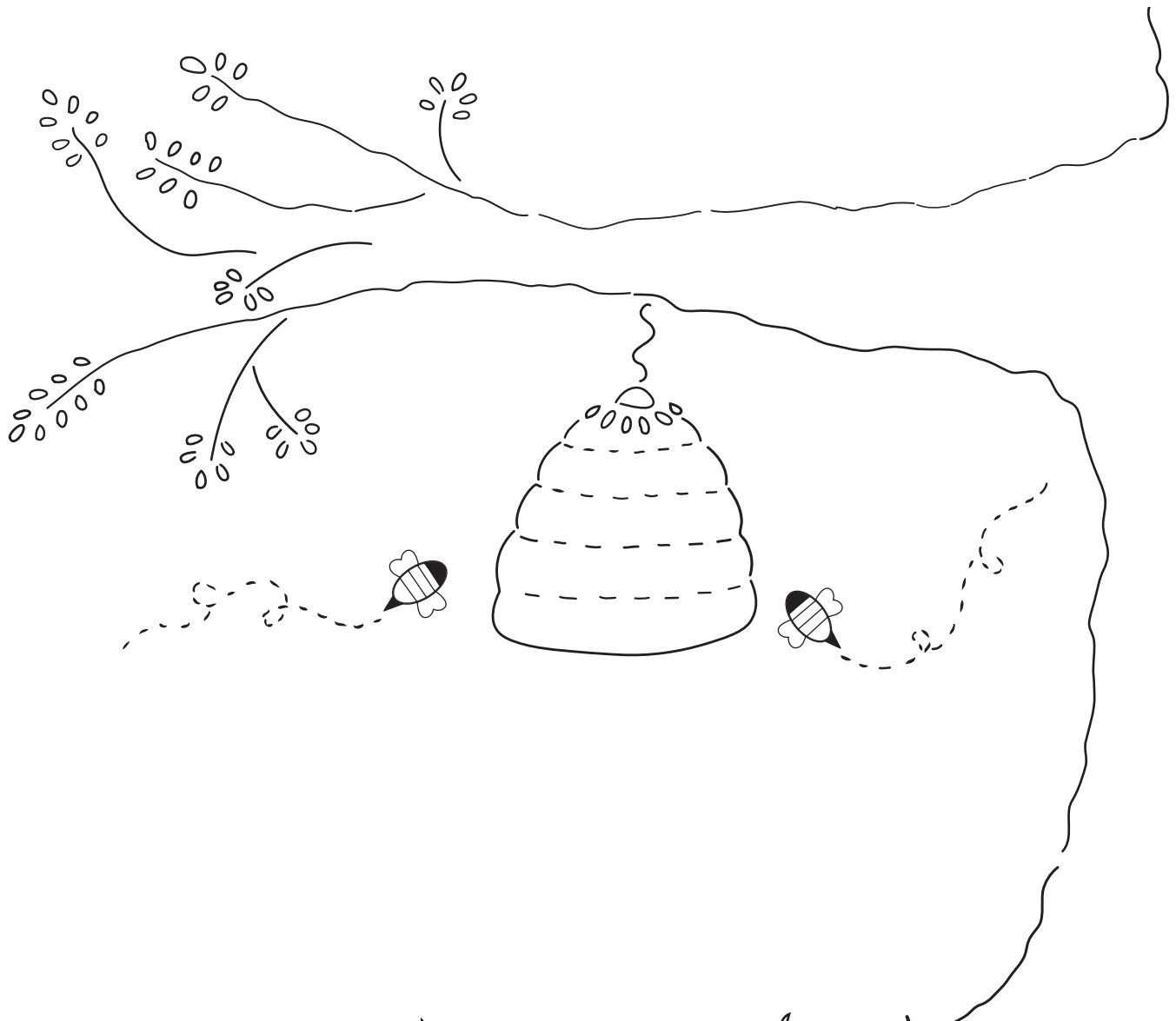
Step 6: With **LIGHT GRAY** floss, use a *lazy daisy stitch* for the bees' wings.

Step 7: Using a *running stitch* and **VERY LIGHT GRAY** floss, complete the bees' flight paths.

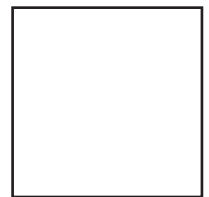
Step 8: Then complete the grass and the small vine holding the hive using a *backstitch* and **AVOCADO GREEN** floss.

Step 9: With a **LIGHT BROWN** floss, *backstitch* the outline of the hive. Then use a *running stitch* for the "folds" in the hive.

Step 10: Remove block from hoop and press with hot iron under pressing cloth or fluffy towel. Trim to 8 ½" square. If desired, machine topstitch a scant 1/8" around all sides to keep from unraveling while working on other blocks.



Hand-drawn illustration of a beehive and bees in a garden.



1 INCH
Do not print to
scale.