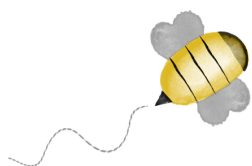


# BEE-UTIFUL QUILT-A-LONG

by Pamela Morgan  
of Sweet Little Stitches  
for Moda Bake Shop



## BLOCK 10 – BEE KIND

All steps use 3 strands of floss unless otherwise specified.

Stitches are denoted in *italics*. Colors of thread are in ALL CAPS.

### INGREDIENTS

- 10 ½" Square Background Fabric
- Various shades of six-strand embroidery floss
- 4" or 5" Embroidery Hoop
- Hand Embroidery Needles
- Frixion or other erasable thin-lined fabric pen

Step 1: Trace block design on to background fabric using desired method.

Step 2: *Satin stitch* the bunny's eyes using BLACK FLOSS.

Step 3: Use LIGHT PINK floss and *backstitch* the bunny's inner ears and nose.

Step 4: With LIGHT GRAY floss, *backstitch* the outline of the bunny.

Step 5: *Backstitch* the bunny's whiskers with VERY LIGHT GRAY floss.

Step 6: Stitch the bees' wings using a *lazy daisy stitch* done in LIGHT GRAY FLOSS.

Step 7: Complete the bees' flight paths using a

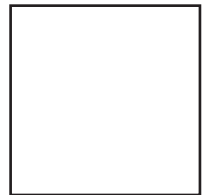
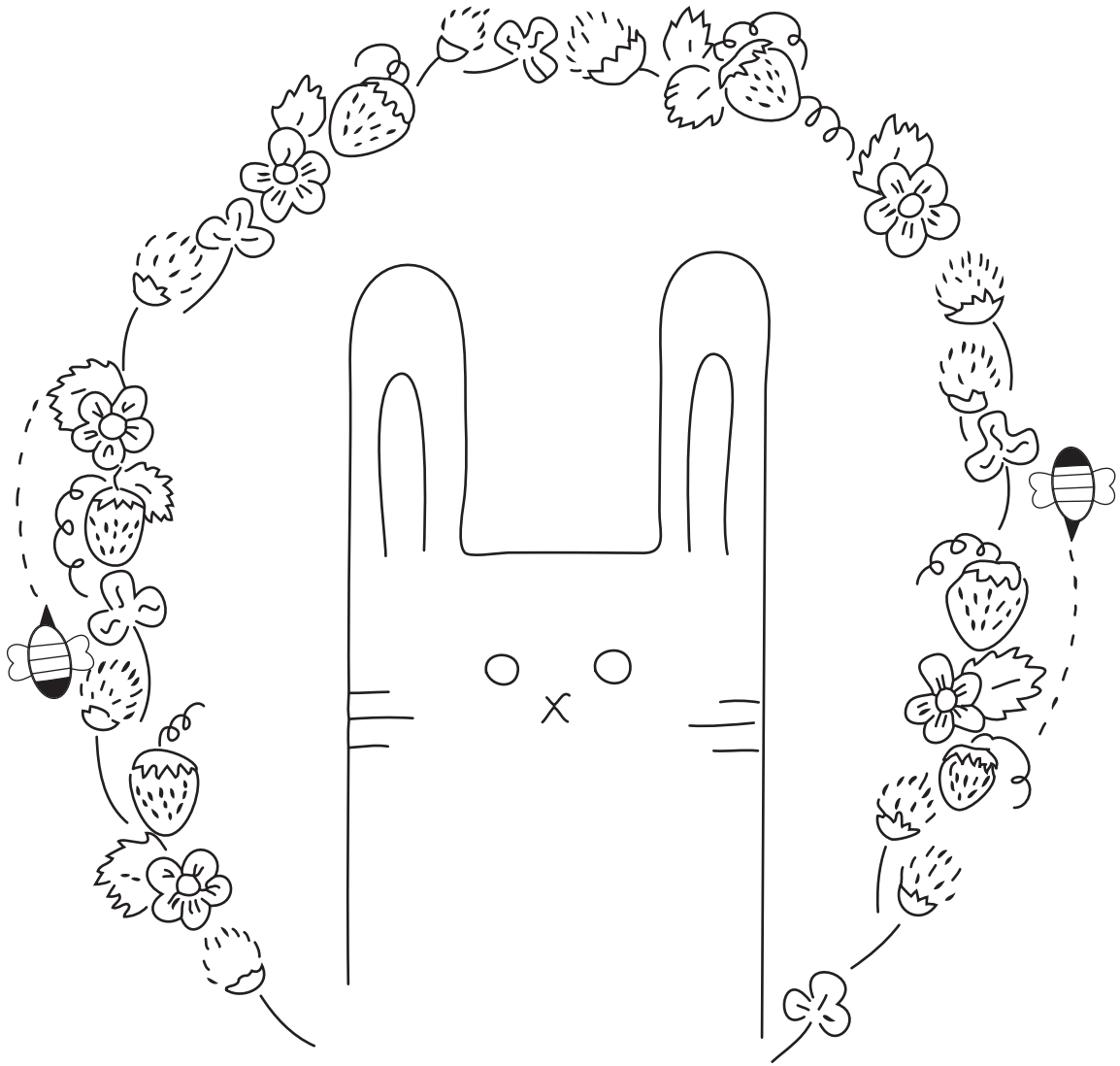
*running stitch* in a VERY LIGHT GRAY floss.

Step 8: *Satin stitch* the bee's body using a GOLD-EN YELLOW floss. Then, using the same floss, *satin stitch* the flowers' centers.

Step 9: With BLACK floss, *satin stitch* the bees' heads, stripes, and stingers.

Step 10: All the remaining elements of the wreath around the bunny are completed using a *backstitch*. For all of the stems and leaves, I used a VARIEGATED GREEN floss. For the clover flowers, I used a PURPLE floss. RED floss was used for the strawberries, and GOLDEN YELLOW was used for the strawberry seeds. I used a PALE YELLOW floss for the strawberry blossoms. Feel free to use colors of your own choosing. I just shared what I used as a point of reference.

Step 11: Remove block from hoop and press with hot iron under pressing cloth or fluffy towel. Trim to 8 ½" square. If desired, machine topstitch a scant 1/8" around all sides to keep from unraveling while working on other blocks.



1 INCH  
Do not print to  
scale.