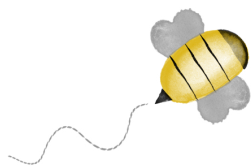


BEE-UTIFUL QUILT-A-LONG

by Pamela Morgan
of Sweet Little Stitches
for Moda Bake Shop



BLOCK 7 – BEE CHARMING

All steps use 3 strands of floss unless otherwise specified.

Stitches are denoted in *italics*. Colors of thread are in ALL CAPS.

INGREDIENTS

- 10 ½" Square Background Fabric
- 4" square wool or coordinating cotton
- Various shades of six-strand embroidery floss
- 4" or 5" Embroidery Hoop
- Hand Embroidery Needles
- Frixion or other erasable thin-lined fabric pen

Step 1: Trace block design on to background fabric using desired method.

Step 2: For the cat's body, *backstitch* using BLACK embroidery floss. Also using BLACK floss, continue to the cat's tail, using a *stem stitch*.

Step 3: *Satin stitch* the cat's eyes using LIGHT GREEN floss.

Step 4: Using a LIGHT DUSTY PINK, *backstitch* the cat's inner ears. Then, still using a *backstitch*, complete the cat's nose.

Step 5: With a LIGHT GRAY, *backstitch* both the cat's whiskers and the bee's wings.

Step 6: Complete the bee's flight path using a *running stitch* in a VERY LIGHT GRAY floss.

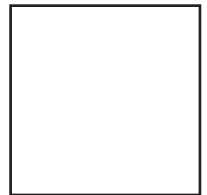
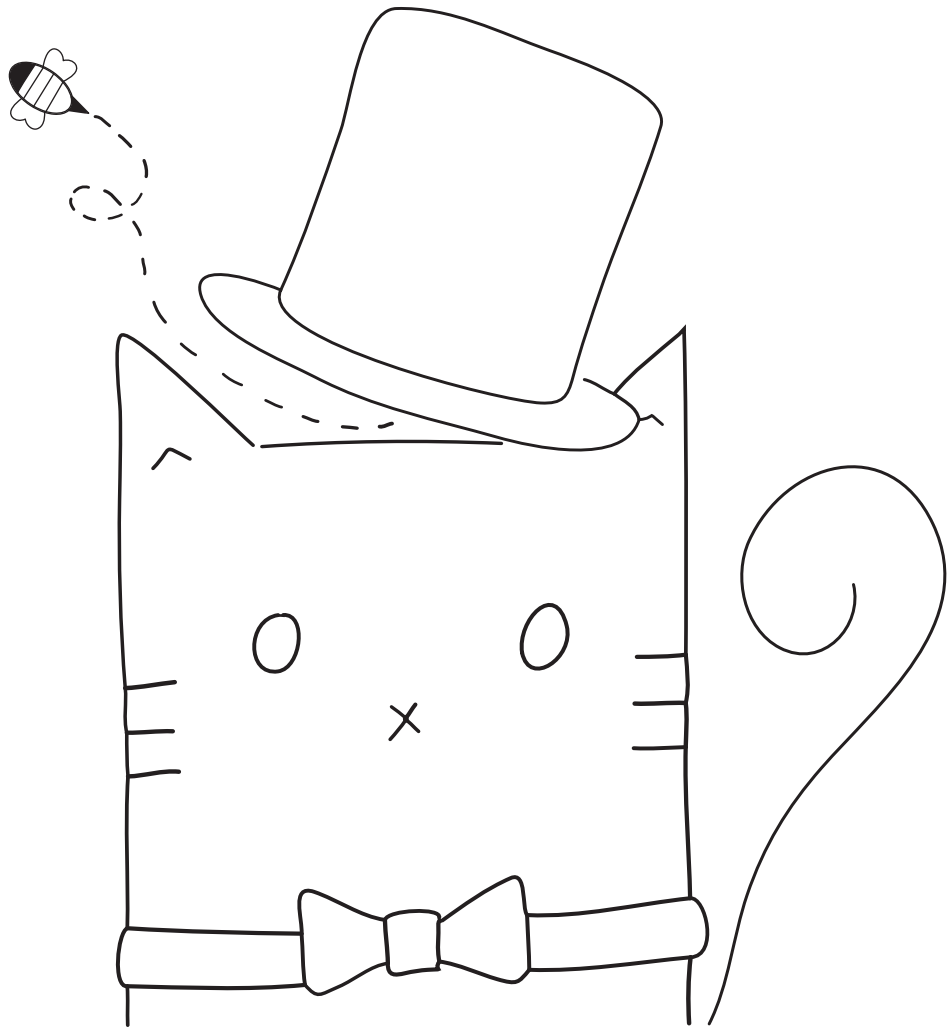
Step 7: Trace **reverse** of hat onto matte side of freezer paper. Press onto chosen material with hot dry iron (I used wool, but I included a video tutorial of how I choose to do cotton applique). Then attach to embroidery foundation with a machine or hand *blanket stitch*.

Step 8: Using MEDIUM RED floss, create distinction between the brim and the top of the kitty's hat with a *running stitch*. Then use a *backstitch* to trace the outline of his bow tie.

Step 9: *Satin stitch* the bee's body using a GOLD-EN YELLOW floss.

Step 10: With BLACK floss, *satin stitch* the bee's head, stripes, and stinger.

Step 11: Remove block from hoop and press with hot iron under pressing cloth or fluffy towel. Trim to 8 ½" square. If desired, machine topstich a scant 1/8" around all sides to keep from unraveling while working on other blocks.



1 INCH
Do not print to
scale.