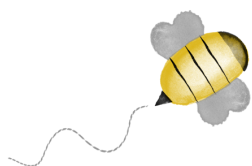


BEE-UTIFUL QUILT-A-LONG

by Pamela Morgan
of Sweet Little Stitches
for Moda Bake Shop



BLOCK 18 - BEE BOUNTIFUL

All steps use 3 strands of floss unless otherwise specified.

Stitches are denoted in *italics*. Colors of thread are in ALL CAPS.

INGREDIENTS

- 10 1/2" Square Background Fabric
- Various shades of six-strand embroidery floss
- 4" or 5" Embroidery Hoop
- Hand Embroidery Needles
- Frixion or other erasable thin-lined fabric pen

Step 5: Using LIGHT GRAY floss, stitch the bee's wings using a *lazy daisy stitch*.

Step 6: Use a *running stitch* done in VERY LIGHT GRAY floss for the bee's flight path.

Step 7: With GOLDEN YELLOW floss, *satin stitch* the bees' bodies.

Step 8: Using BLACK floss, *satin stitch* the bees' heads, stripes, and stingers.

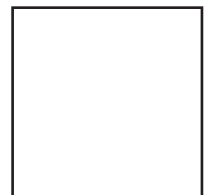
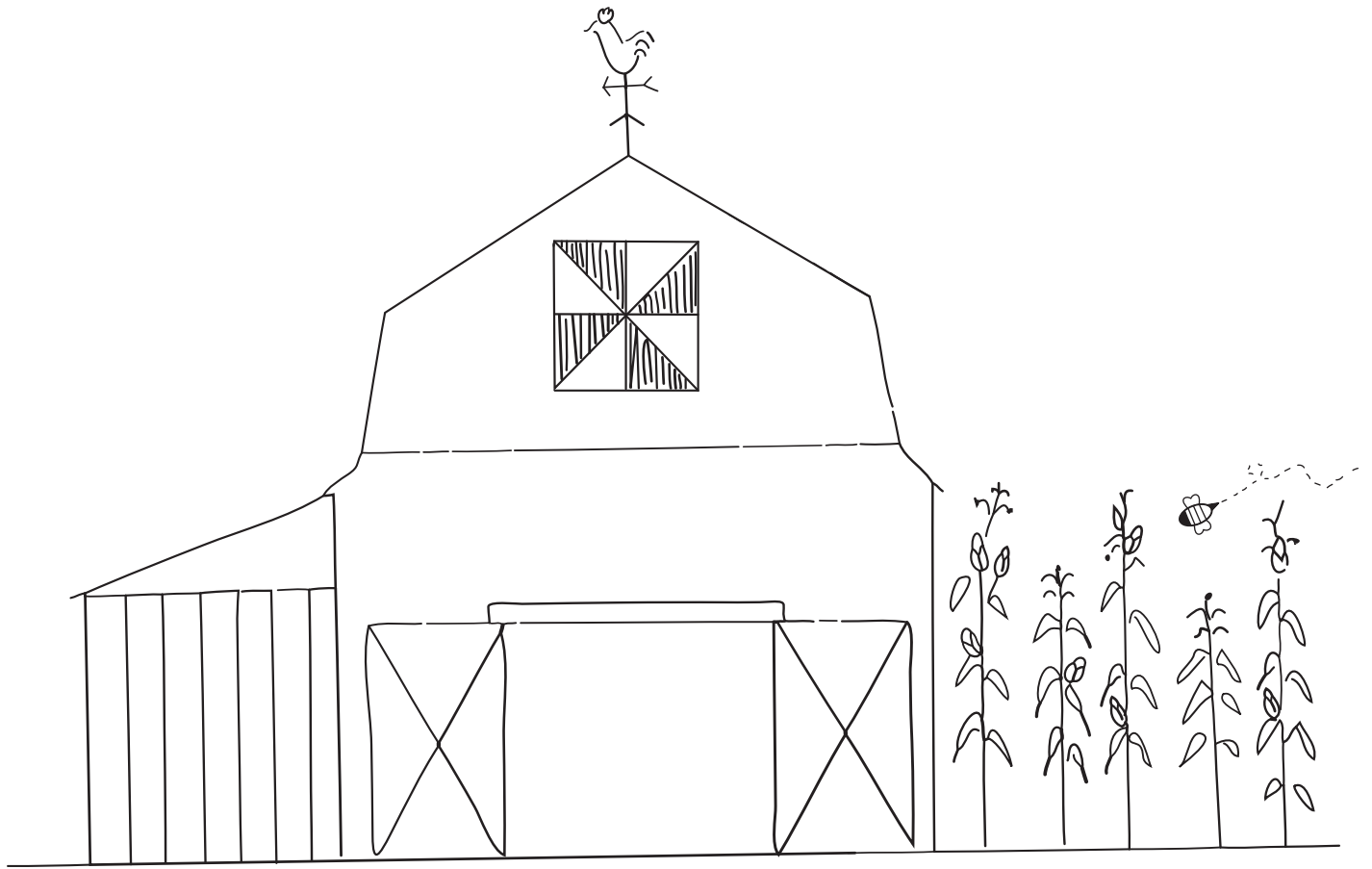
Step 9: Remove block from hoop and press with hot iron under pressing cloth or fluffy towel. Trim to 8 1/2" square. If desired, machine topstitch a scant 1/8" around all sides to keep from unraveling while working on other blocks.

Step 1: Trace block design on to background fabric using desired method.

Step 2: *Backstitch* the barn in its entirety using RED floss. Then, using the same color floss, *satin stitch* the pinwheel on the barn quilt. With BLACK floss, outline the satin stitching and then the remainder of the barn quilt using a *backstitch*.

Step 3: With BLACK floss, *backstitch* the weathervane, with the exception of the cockscomb. For this part, switch back to RED floss and use a *lazy daisy stitch*.

Step 4: Use AVOCADO GREEN floss and *backstitch* the cornstalks, leaves, and grassline. Switch to GOLDEN YELLOW floss and *satin stitch* the tiny ears of corn.



1 INCH
Do not print to
scale.