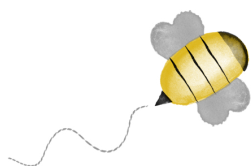


BEE-UTIFUL QUILT-A-LONG

by Pamela Morgan
of Sweet Little Stitches
for Moda Bake Shop



BLOCK 19 – BEE ADVENTUROUS

All steps use 3 strands of floss unless otherwise specified.

Stitches are denoted in *italics*. Colors of thread are in ALL CAPS.

INGREDIENTS

- 10 ½" Square Background Fabric
- Various shades of six-strand embroidery floss
- 4" or 5" Embroidery Hoop
- Hand Embroidery Needles
- Frixion or other erasable thin-lined fabric pen

Step 1: Trace block design on to background fabric using desired method.

Step 2: *Backstitch* the body of the pickup truck with MINT GREEN floss.

Step 3: With BLACK floss, *satin stitch* the tires.

Step 4: Use MEDIUM GRAY floss to *backstitch* the license plate and the roadway. Then, using the same floss, fill in the driver's side window with a widely spaced *satin stitch*.

Step 5: Using LIGHT GRAY floss, stitch the bee's wings using a *lazy daisy stitch*. Switch to a *satin stitch* for the gas cap, side mirror, and windshield wipers. Use a widely spaced *satin stitch* for the grill. Then, still using the same floss, *backstitch* the hubcaps, running board, outer edge of the

grill, hood ornament, door handle, and headlights.

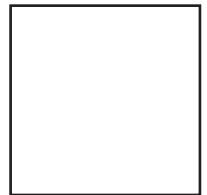
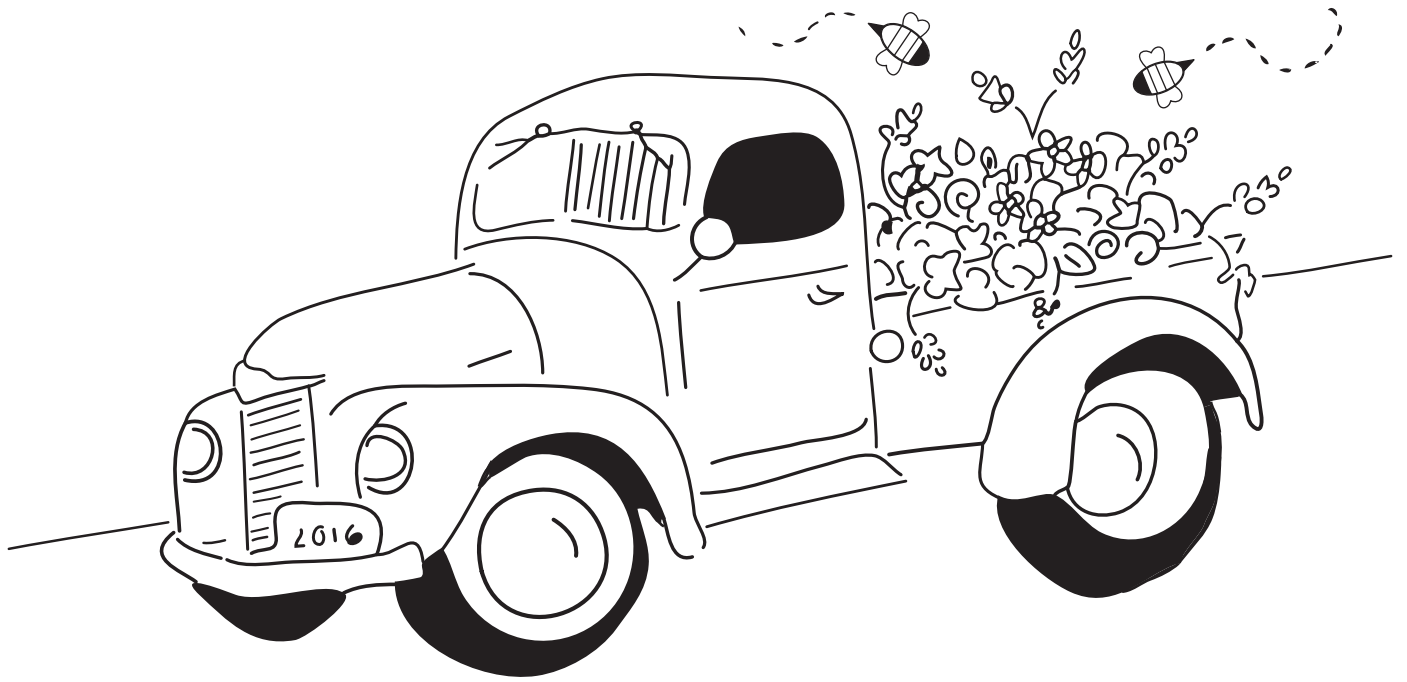
Step 6: Use a *running stitch* done in VERY LIGHT GRAY floss for the bees' flight paths.

Step 7: With GOLDEN YELLOW floss, *satin stitch* the bees' bodies.

Step 8: Using BLACK floss, *satin stitch* the bees' heads, stripes, and stingers.

Step 9: Fill in the bed of the truck by completing the flowers using stitching and colors of your choosing. *BEE CREATIVE!*

Step 10: Remove block from hoop and press with hot iron under pressing cloth or fluffy towel. Trim to 8 ½" square. If desired, machine topstitch a scant 1/8" around all sides to keep from unraveling while working on other blocks.



1 INCH
Do not print to
scale.