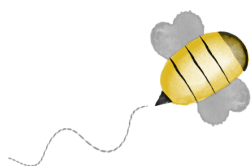


BEE-UTIFUL QUILT-A-LONG

by Pamela Morgan
of Sweet Little Stitches
for Moda Bake Shop



BLOCK 20 – BEE FRIENDLY

All steps use 3 strands of floss unless otherwise specified.

Stitches are denoted in *italics*. Colors of thread are in ALL CAPS.

INGREDIENTS

- 10 ½" Square Background Fabric
- Various shades of six-strand embroidery floss
- 4" or 5" Embroidery Hoop
- Hand Embroidery Needles
- Frixion or other erasable thin-lined fabric pen

Step 1: Trace block design on to background fabric using desired method.

Step 2: *Backstitch* the line that the bunny is sitting on with MEDIUM GRAY floss.

Step 3: With LIGHT GRAY floss, *backstitch* the bunny's body and the flying bee's wings. Then use the same floss and a *lazy daisy stitch* for the tiny bee's (on the bunny's ear) wings.

Step 4: Using VERY LIGHT GRAY floss, *backstitch* the bunny's tail. Then use the same floss and a *running stitch* for the bee's flight path.

Step 5: *Satin stitch* the flower center and the bees' bodies using GOLDEN YELLOW floss. Then use a *backstitch* for the veins in the petals and the strawberry seeds.

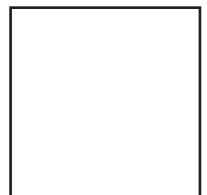
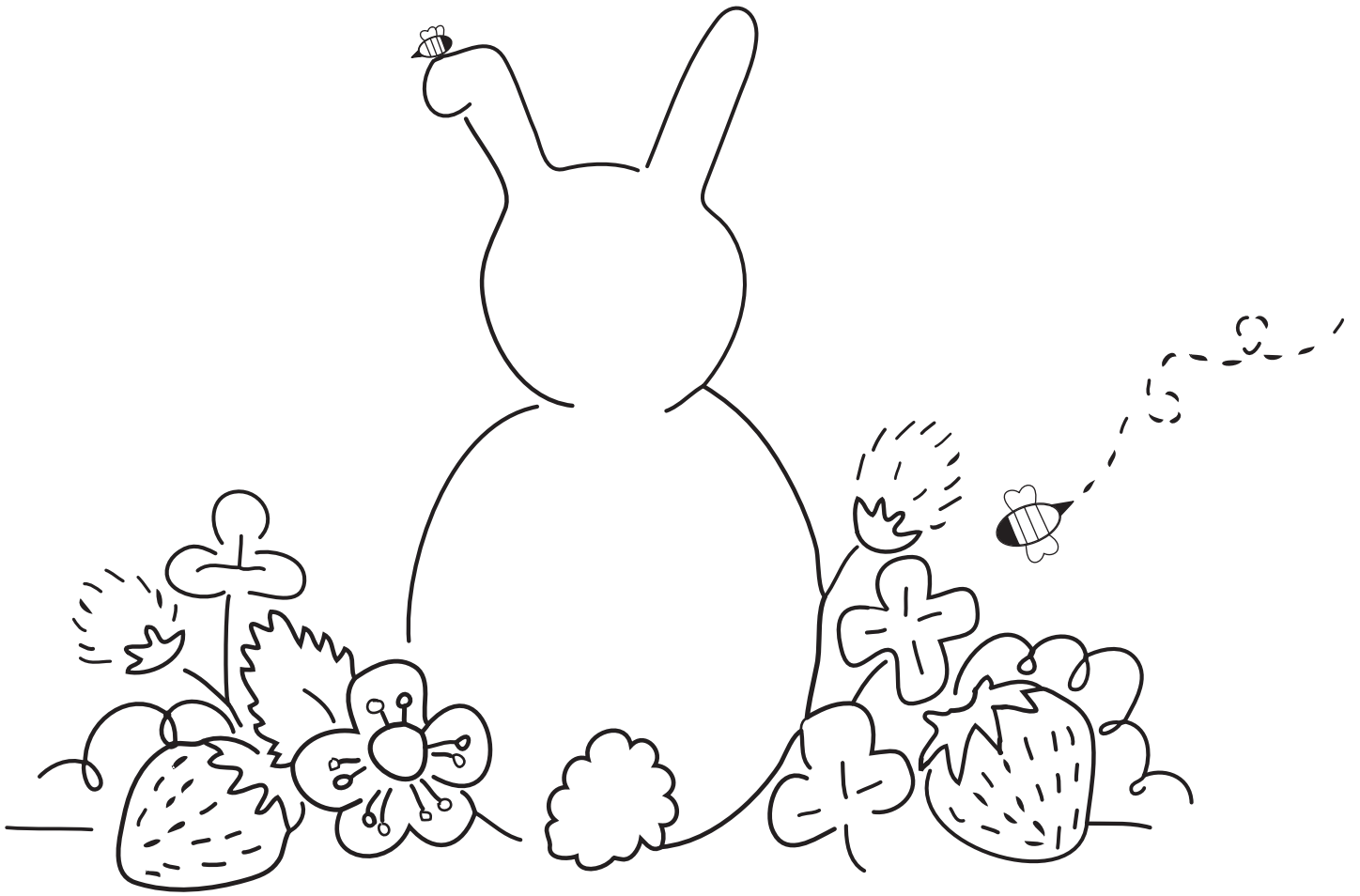
Step 6: With AVOCADO GREEN floss, *backstitch* the stems, leaves, and vines.

Step 7: Using RED floss, outline the strawberry with a *backstitch*.

Step 8: *Backstitch* the clover blossoms using PURPLE floss.

Step 9: *Satin stitch* the bees' heads, stripes, and stingers using black floss.

Step 10: Remove block from hoop and press with hot iron under pressing cloth or fluffy towel. Trim to 8 ½" square. If desired, machine topstich a scant 1/8" around all sides to keep from unraveling while working on other blocks.



1 INCH
Do not print to
scale.