

moda BAKE SHOP



BEE-UTIFUL QUILT

by Pamela Norquist
of Sweet Little Stitches
for Moda Bake Shop

Ambitious

The Bee-utiful quilt finishes at 58" x 70".

Ingredients:

{for the quilt}

1 charm pack or 4 mini charm packs for sashing (Bee Creative by Deb Strain)

1 yd cream handwriting print (block border)

½ yard tonal honeycomb print (inner border)

1¼ yard large black floral (outer border)

4¼ yard backing

⅝ yard binding

Instructions:

{cutting}

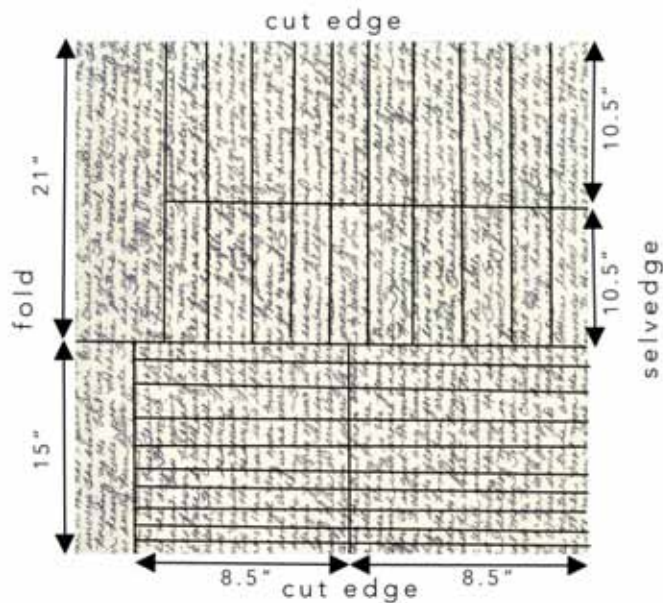
Trim your finished embroidery blocks to 8.5" square. Next, we're going to cut the handwriting print for framing the embroidery blocks. You're going to need 40 - 1.5" x 8.5" rectangles, and 40 - 1.5" x 10.5" rectangles. For me, figuring this step in order to get all of the handwriting facing the correct direction was the hardest part of this quilt! So to make things a little easier on you, I've made this handy-dandy cutting diagram (note: this only applies to this specific print, from Deb Strain's *Bee Creative* line.)

8/25/2016

Original Recipe can be found at www.modabakeshop.com

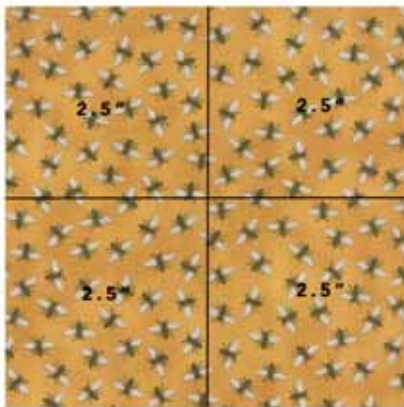
Recipes are sometimes altered to correct errors. Please ensure that you have downloaded the most recent Printer Friendly Version before starting your project. If you find a mistake in this pattern, please contact modabakeshop@unitednotions.com.

This is an original pattern not intended for sale.



Note: This drawing is absolutely, positively not to scale.
Next, cut your charm squares into four equal parts, like so:

Cut charm squares into 4 equal parts



Assuming that your charm pack contains 40 - 5" squares, this will yield 160 - 2.5" squares. You will need a total of 167 squares for the sashing. Not to worry, though, you will have extra of your frame and border fabrics, from which you can cut those extra 7 squares.

From the tonal honeycomb print, cut 6 strips, 2.5" x WOF. From your large black floral, cut 6 strips, 4.25" x WOF. From your leftover material, cut those last 7 - 2.5" squares. Now on to piecing.

{piecing}

All blocks are pieced with a scant 1/4" seam.

Your first step is to frame your embroidered blocks. Sew 2 - 1.5" x 8.5" rectangles to the left and right of each block. Press seams outward (away from embroidery). Then sew 2 - 1.5" x 10.5" rectangles to the top and bottom of each block. Now your blocks are framed. They should measure 10.5" square (unfinished).

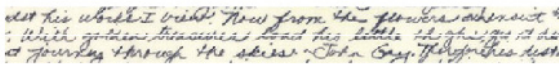
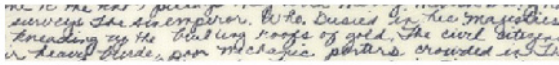
8/25/2016

Original Recipe can be found at www.modabakeshop.com

Recipes are sometimes altered to correct errors. Please ensure that you have downloaded the most recent Printer Friendly Version before starting your project. If you find a mistake in this pattern, please contact modabakeshop@unitednotions.com.

This is an original pattern not intended for sale.

1.5" x 10.5"



Next, choose 5 of the 2.5" squares. Sew together end to end, so you end up with a piece that looks like this:



Make 15.

Then, take 23 of the 2.5" and piece them together end to end. You should end up with a strip that looks like this:



Make 4.

Next, take your 2.5" strips of the tonal honeycomb print. Sew them together, end to end, so that you have one long strip. Subcut the strip into 2 strips, 2.5" x 58.5" and 2 strips, 2.5" x 50.5" (Note: Always measure your quilt for accuracy before cutting border strips, and correct strip lengths accordingly).

Then, sew your 6 - 4.25" strips of black floral print together, end to end, to make one long strip. Subcut this into 2 strips, 4.25" x 62.5" and 2 strips 4.25" x 58" (Again, always measure for accuracy before cutting border strips, and adjust strip lengths accordingly).

Now piece your rows together. Layout should be 5 rows of four blocks, with *sashing in between blocks only*.

Then add the 4 rows of 23 blocks in between each row. Lastly, add borders, one at a time. Attach the vertical strips of the inner border first, followed by the horizontal. Add the second border, vertical strips first, followed by horizontal.

8/25/2016

Original Recipe can be found at www.modabakeshop.com

Recipes are sometimes altered to correct errors. Please ensure that you have downloaded the most recent Printer Friendly Version before starting your project. If you find a mistake in this pattern, please contact modabakeshop@unitednotions.com.

This is an original pattern not intended for sale.



Layer, baste, and quilt as desired!

Yield:

One bee-utiful quilt! The Bee-utiful quilt finishes at 58" x 70".



Happy Stitching!

-Pamela Morgan

{[Sweet Little Stitches](#)} {[QAL Facebook Group](#)} {[Instagram](#)}

8/25/2016

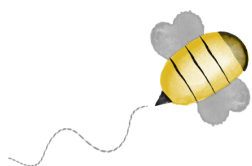
Original Recipe can be found at www.modabakeshop.com

Recipes are sometimes altered to correct errors. Please ensure that you have downloaded the most recent Printer Friendly Version before starting your project. If you find a mistake in this pattern, please contact modabakeshop@unitednotions.com.

This is an original pattern not intended for sale.

BEE-UTIFUL QUILT-A-LONG

by Pamela Morgan
of Sweet Little Stitches
for Moda Bake Shop



BLOCK 1 - BEE CURIOUS

All steps use 3 strands of floss unless otherwise specified.

Stitches are denoted in *italics*. Colors of thread are in ALL CAPS.

INGREDIENTS

- 10 ½" Square Background Fabric
- Various Shades of Six-Strand Embroidery Floss
- 4" or 5" Embroidery Hoop
- Hand Embroidery Needles
- Frixion or other erasable thin-lined fabric pen

Step 1: Trace block design on to background fabric using desired method.

Step 2: For the cat's body, *backstitch* using BLACK embroidery floss. Also using BLACK floss, continue to the cat's tail, using a *stem stitch*.

Step 3: *Satin stitch* the cat's eyes using LIGHT GREEN floss.

Step 4: Using a LIGHT DUSTY PINK, *backstitch* the cat's inner ears. Then, still using a *backstitch*, complete the cat's nose.

Step 5: With a LIGHT GRAY, *backstitch* both the cat's whiskers and the bee's wings.

Step 6: Complete the bee's flight path using a *running stitch* in a VERY LIGHT GRAY floss.

Step 7: *Satin stitch* the flower centers using a DARK WARM BROWN.

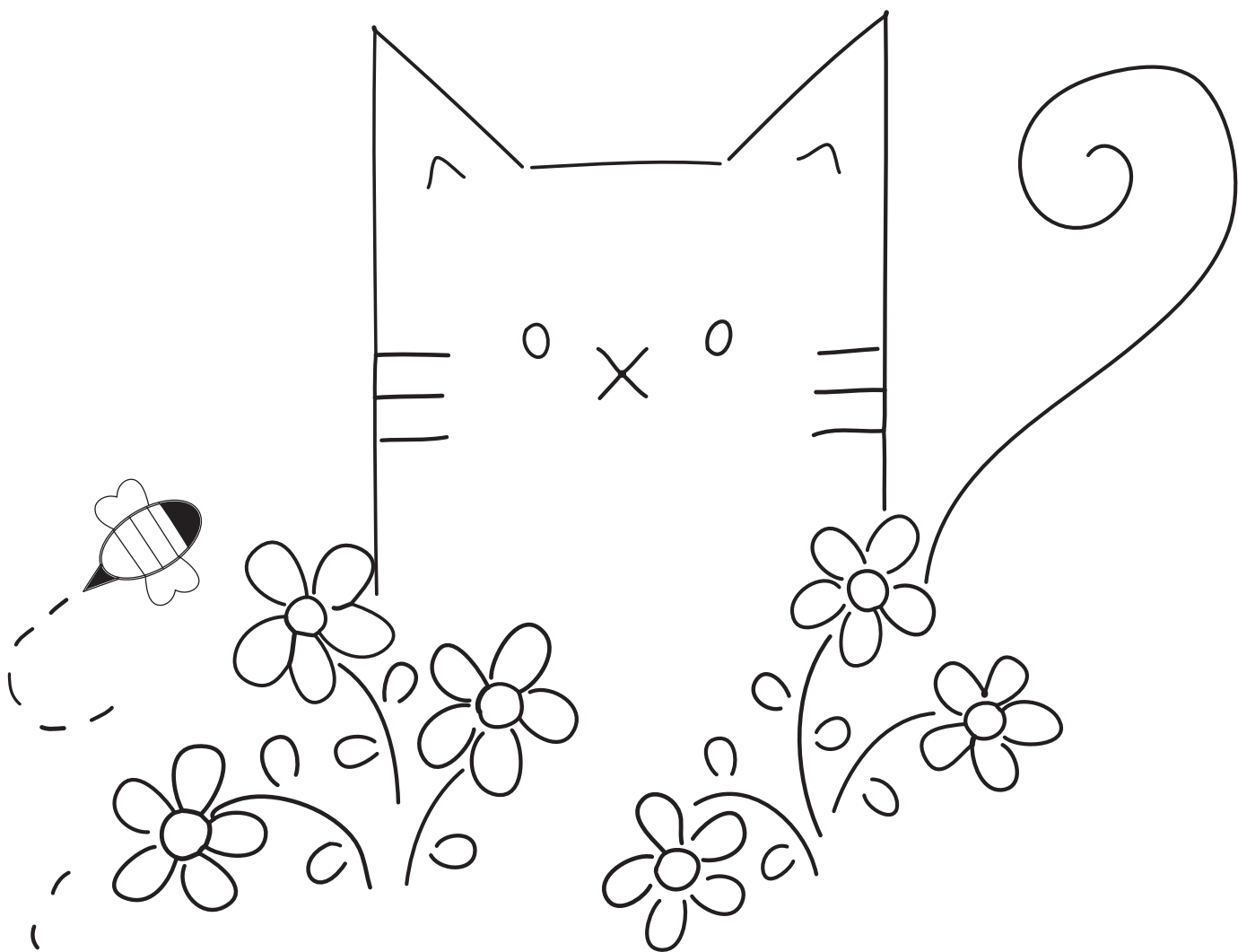
Step 8: Using a GOLDEN YELLOW floss, *backstitch* the flower petals.

Step 9: Using the same GOLDEN YELLOW floss, *satin stitch* the bee's body.

Step 10: With BLACK floss, *satin stitch* the bee's head and tail. Then use one long *running stitch* for each of the bee's stripes.

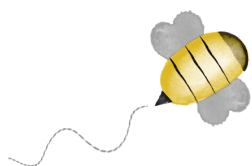
Step 11: With an AVOCADO colored floss, *stem stitch* the flowers' stems. Then complete the leaves using a *backstitch*.

Step 12: Remove block from hoop and press with hot iron under pressing cloth or fluffy towel. Trim to 8 ½" square. If desired, machine topstitch a scant 1/8" around all sides to keep from unraveling while working on other blocks.



BEE-UTIFUL QUILT-A-LONG

by Pamela Morgan
of Sweet Little Stitches
for Moda Bake Shop



BLOCK 2 - BEE PRODUCTIVE

All steps use 3 strands of floss unless otherwise specified.

Stitches are denoted in *italics*. Colors of thread are in ALL CAPS.

INGREDIENTS

- 10 1/2" Square Background Fabric
- 6 Scraps hand-dyed wool, approximately 2 1/2" each
- Various shades of six-strand embroidery floss
- 4" or 5" Embroidery Hoop
- Hand Embroidery Needles
- Frixion or other erasable thin-lined fabric pen

Step 6: Still using the BLACK floss, *backstitch* each of the bee's stripes, and then *satin stitch* the stinger.

Step 7: With LIGHT GRAY floss, outline the bee's wings with a *chain stitch*. Then fill in using a long, diagonal, spaced *satin stitch*.

Step 8: Using a *running stitch* and VERY LIGHT GRAY floss, complete the bee's flight path.

Step 9: Remove block from hoop and press with hot iron under pressing cloth or fluffy towel. Trim to 8 1/2" square. If desired, machine topstitch a scant 1/8" around all sides to keep from unraveling while working on other blocks.

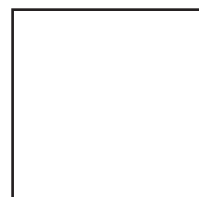
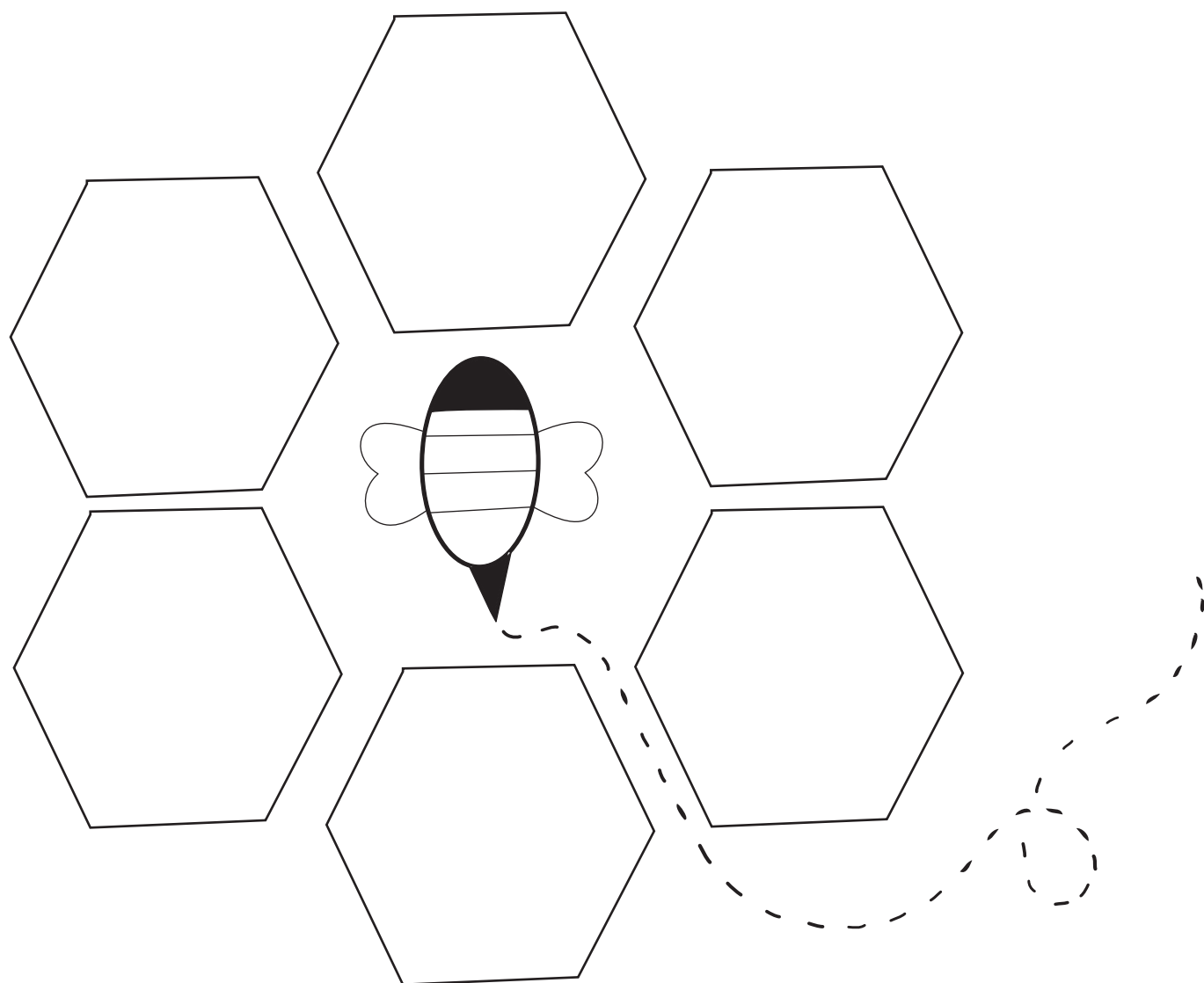
Step 1: Trace block design on to background fabric using desired method.

Step 2: Trace hexagon shapes onto freezer paper. Press freezer paper shapes onto wool using a hot, dry iron. Cut out wool shapes, then peel freezer paper from back. Glue baste to background fabric.

Step 3: Attach hexagons using either a hand or machine *blanket stitch* in BLACK.

Step 4: Using GOLDEN YELLOW floss, *satin stitch* the bee's body between the stripes.

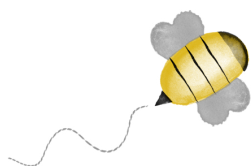
Step 5: With BLACK floss, fill the bee's head with *french knots*. Wrap thread around the needle 4 turns for each knot.



1 INCH
Do not print to
scale.

BEE-UTIFUL QUILT-A-LONG

by Pamela Morgan
of Sweet Little Stitches
for Moda Bake Shop



BLOCK 3 - BEE LOVELY

All steps use 3 strands of floss unless otherwise specified.

Stitches are denoted in *italics*. Colors of thread are in ALL CAPS.

INGREDIENTS

- 10 1/2" Square Background Fabric
- Various shades of six-strand embroidery floss
- 4" or 5" Embroidery Hoop
- Hand Embroidery Needles
- Frixion or other erasable thin-lined fabric pen

Step 1: Trace block design on to background fabric using desired method.

Step 2: Using an **AVOCADO GREEN** colored floss, *backstitch* the stem and leaves of the bluebells.

Step 3: Then switch to a **PERIWINKLE BLUE** floss, and *satin stitch* the bells of the bluebells.

Step 4: Using **GOLDEN YELLOW** floss, *satin stitch* the center of the bluebells, the center of the round flower, the bees' bodies, and the ends of the tulip.

Step 5: With **BLACK** floss, *satin stitch* the bees' heads, stripes, and stingers.

Step 6: With **LIGHT GRAY** floss, outline the bees'

wings with a *backstitch*.

Step 7: Using a *running stitch* and **VERY LIGHT GRAY** floss, complete the bees' flight paths.

Step 8: Starting at the center, completely fill in the circle flower with a continuous *chain stitch* using **MEDIUM PINK** floss.

Step 9: Using **AVOCADO GREEN** floss, *stem stitch* the rest of the flowers' stems, as well as the "antennae" on the tulip. Then *backstitch* the rest of the leaves.

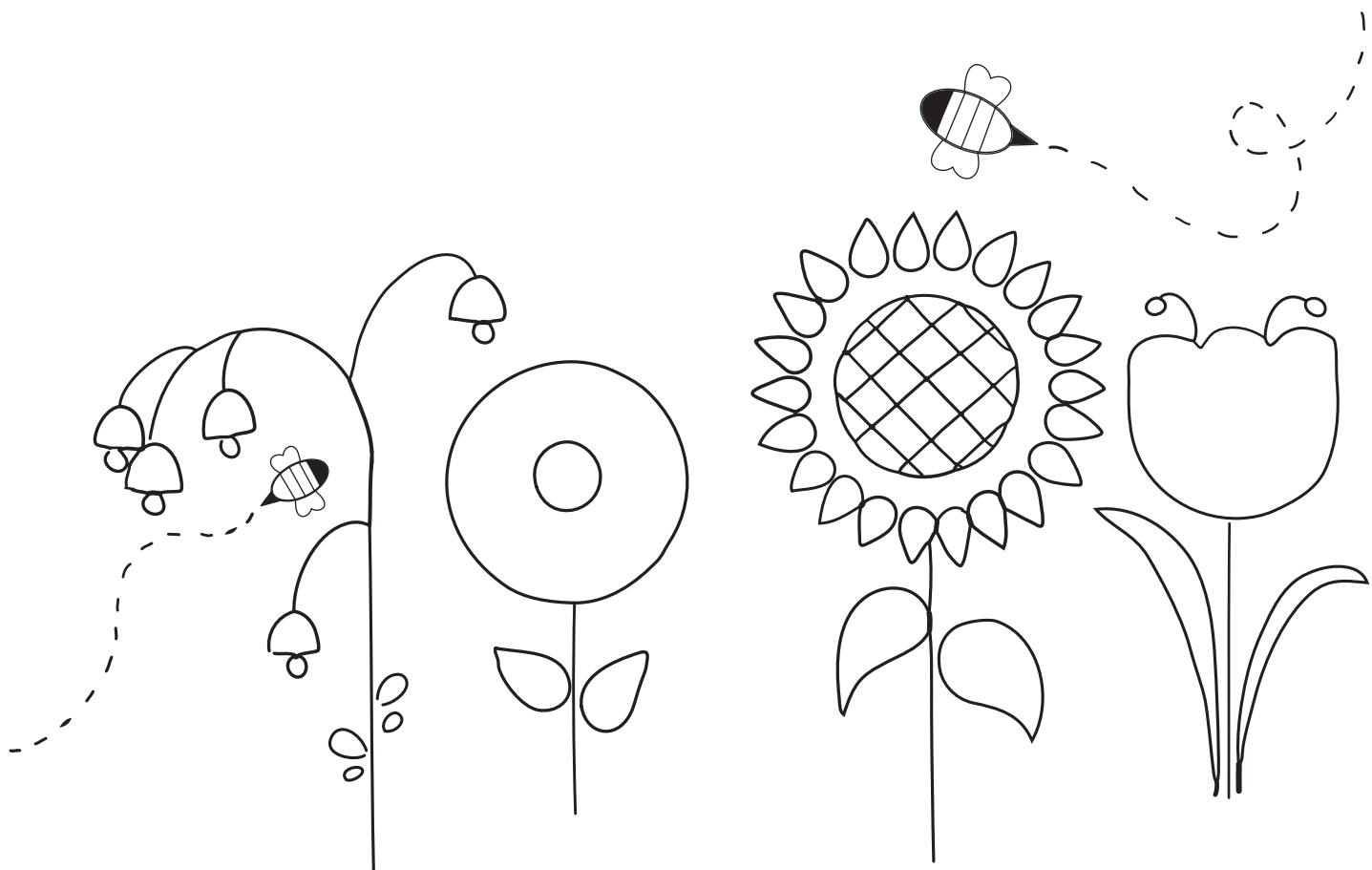
Step 10: *Backstitch* the sunflower petals using **GOLDEN YELLOW** floss.

(Note: For the step, I used three different shades of yellow floss. Feel free to experiment to find a combination that works for you!)

Step 11: With **DARK BROWN** floss, follow the outline of the sunflower center with *French knots*. Then trace the cross-hatching inside with a *backstitch*.

Step 12: Complete the outline of the tulip with **MEDIUM PURPLE** floss using a *chain stitch*.

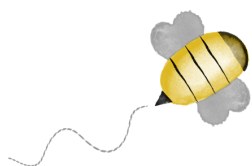
Step 13: Remove block from hoop and press with hot iron under pressing cloth or fluffy towel. Trim to 8 1/2" square. If desired, machine topstitch a scant 1/8" around all sides to keep from unraveling while working on other blocks.



1 INCH
Do not print to
scale.

BEE-UTIFUL QUILT-A-LONG

by Pamela Morgan
of Sweet Little Stitches
for Moda Bake Shop



BLOCK 4 - BEE HUMBLE

All steps use 3 strands of floss unless otherwise specified.

Stitches are denoted in *italics*. Colors of thread are in ALL CAPS.

INGREDIENTS

- 10 ½" Square Background Fabric
- Various shades of six-strand embroidery floss
- 4" or 5" Embroidery Hoop
- Hand Embroidery Needles
- Frixion or other erasable thin-lined fabric pen

Step 1: Trace block design on to background fabric using desired method.

Step 2: Using a variegated **GREEN** floss, complete the leaves on the tree using a *lazy daisy stitch*.

Step 3: With **DARK BROWN** floss, *backstitch* the trunk and branches of the tree. Then, using the same color floss, *satin stitch* the center of the flower atop the beehive.

Step 4: Using **GOLDEN YELLOW** floss, *satin stitch* the bees' bodies. Then switch to a *lazy daisy stitch*, and make the petals of the daisy on top of the beehive.

Step 5: With **BLACK** floss, *satin stitch* the bees' heads, stripes, and stingers. Also *satin stitch* the

entrance to the hive.

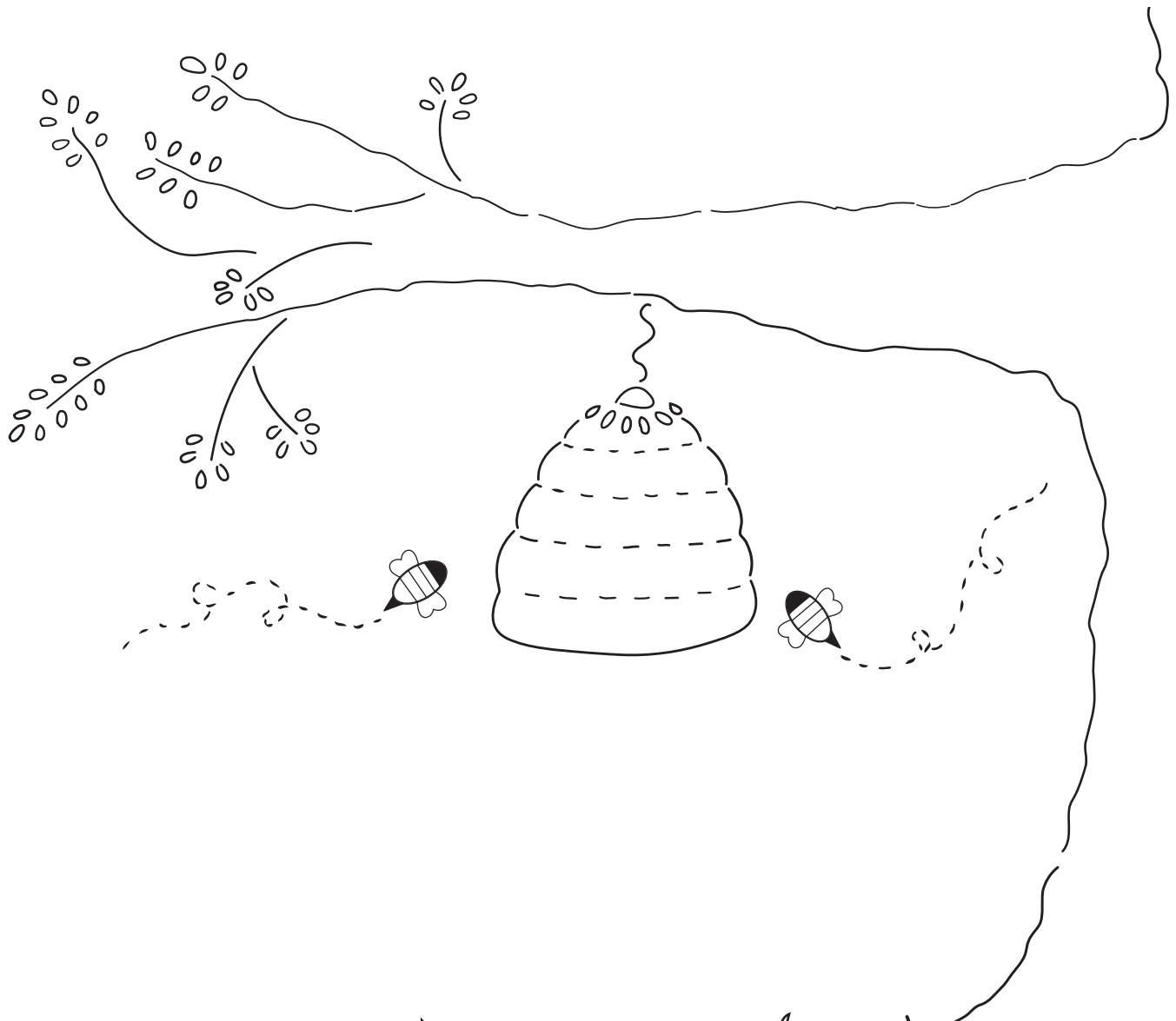
Step 6: With **LIGHT GRAY** floss, use a *lazy daisy stitch* for the bees' wings.

Step 7: Using a *running stitch* and **VERY LIGHT GRAY** floss, complete the bees' flight paths.

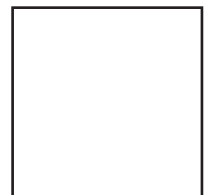
Step 8: Then complete the grass and the small vine holding the hive using a *backstitch* and **AVOCADO GREEN** floss.

Step 9: With a **LIGHT BROWN** floss, *backstitch* the outline of the hive. Then use a *running stitch* for the "folds" in the hive.

Step 10: Remove block from hoop and press with hot iron under pressing cloth or fluffy towel. Trim to 8 ½" square. If desired, machine topstitch a scant 1/8" around all sides to keep from unraveling while working on other blocks.



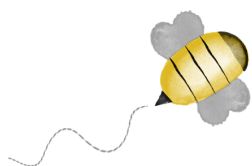
Hand-drawn illustration of a beehive and bees.



1 INCH
Do not print to
scale.

BEE-UTIFUL QUILT-A-LONG

by Pamela Morgan
of Sweet Little Stitches
for Moda Bake Shop



BLOCK 5 - BEE COURTEOUS

All steps use 3 strands of floss unless otherwise specified.

Stitches are denoted in *italics*. Colors of thread are in ALL CAPS.

to 8 ½" square. If desired, machine topstitch a scant 1/8" around all sides to keep from unraveling while working on other blocks.

INGREDIENTS

- 10 ½" Square Background Fabric
- Various shades of six-strand embroidery floss
- 4" or 5" Embroidery Hoop
- Hand Embroidery Needles
- Frixion or other erasable thin-lined fabric pen

Step 1: With a variety of shades of **YELLOW**, **GRAY**, and **BLACK** floss, embroider the hexagons to your liking. I *satin stitched* some blocks (at random), and the rest I outlined with a *backstitch*.

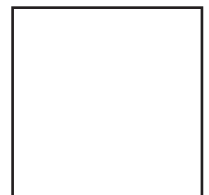
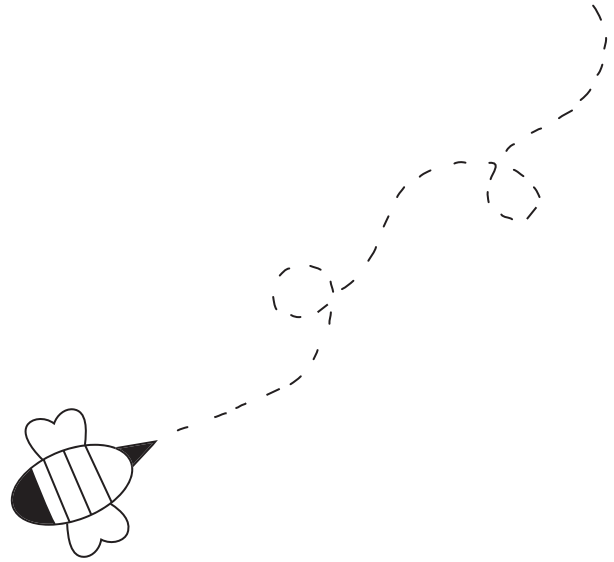
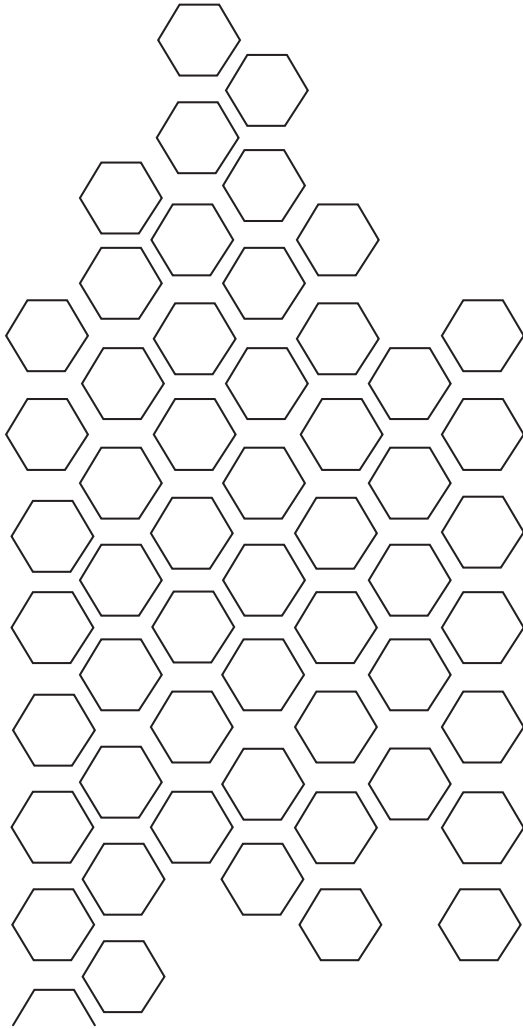
Step 2: Using **GOLDEN YELLOW** floss, *satin stitch* the bee's body.

Step 3: With **BLACK** floss, *satin stitch* the bee's head, stripes, and stinger.

Step 4: With **LIGHT GRAY** floss, use a *backstitch* for the bee's wings.

Step 5: Using a *running stitch* and **VERY LIGHT GRAY** floss, complete the bee's flight path.

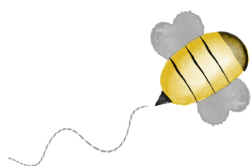
Step 6: Remove block from hoop and press with hot iron under pressing cloth or fluffy towel. Trim



1 INCH
Do not print to
scale.

BEE-UTIFUL QUILT-A-LONG

by Pamela Morgan
of Sweet Little Stitches
for Moda Bake Shop



BLOCK 6 – BEE SWEET

All steps use 3 strands of floss unless otherwise specified.

Stitches are denoted in *italics*. Colors of thread are in ALL CAPS.

INGREDIENTS

- 10 ½" Square Background Fabric
- Various shades of six-strand embroidery floss
- 4" or 5" Embroidery Hoop
- Hand Embroidery Needles
- Frixion or other erasable thin-lined fabric pen

Step 7: *Backstitch* the outline of the cake stand using BLACK floss.

Step 8: Using a PALE YELLOW floss, outline the flower petals with a *backstitch*.

Step 9: *Backstitch* the leaves of the strawberry and the flower using AVOCADO GREEN floss, and then use a *running stitch* for the vein of the flower's leaf.

Step 10: Remove block from hoop and press with hot iron under pressing cloth or fluffy towel. Trim to 8 ½" square. If desired, machine topstitch a scant 1/8" around all sides to keep from unraveling while working on other blocks.

Step 1: With MEDIUM RED floss, *backstitch* the outline of the strawberry.

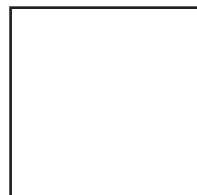
Step 2: Using GOLDEN YELLOW floss, *satin stitch* the bee's body and the center of the flower. Then use a *running stitch* to complete the seeds of the strawberry.

Step 3: With BLACK floss, *satin stitch* the bee's head, stripes, and stinger.

Step 4: With LIGHT GRAY floss, use a *backstitch* for the bee's wings.

Step 5: Using a *running stitch* and VERY LIGHT GRAY floss, complete the bee's flight path.

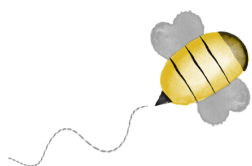
Step 6: Use a PALE PINK floss, and a *backstitch* to outline both layers of the cake.



1 INCH
Do not print to
scale.

BEE-UTIFUL QUILT-A-LONG

by Pamela Morgan
of Sweet Little Stitches
for Moda Bake Shop



BLOCK 7 – BEE CHARMING

All steps use 3 strands of floss unless otherwise specified.

Stitches are denoted in *italics*. Colors of thread are in ALL CAPS.

INGREDIENTS

- 10 ½" Square Background Fabric
- 4" square wool or coordinating cotton
- Various shades of six-strand embroidery floss
- 4" or 5" Embroidery Hoop
- Hand Embroidery Needles
- Frixion or other erasable thin-lined fabric pen

Step 1: Trace block design on to background fabric using desired method.

Step 2: For the cat's body, *backstitch* using BLACK embroidery floss. Also using BLACK floss, continue to the cat's tail, using a *stem stitch*.

Step 3: *Satin stitch* the cat's eyes using LIGHT GREEN floss.

Step 4: Using a LIGHT DUSTY PINK, *backstitch* the cat's inner ears. Then, still using a *backstitch*, complete the cat's nose.

Step 5: With a LIGHT GRAY, *backstitch* both the cat's whiskers and the bee's wings.

Step 6: Complete the bee's flight path using a *running stitch* in a VERY LIGHT GRAY floss.

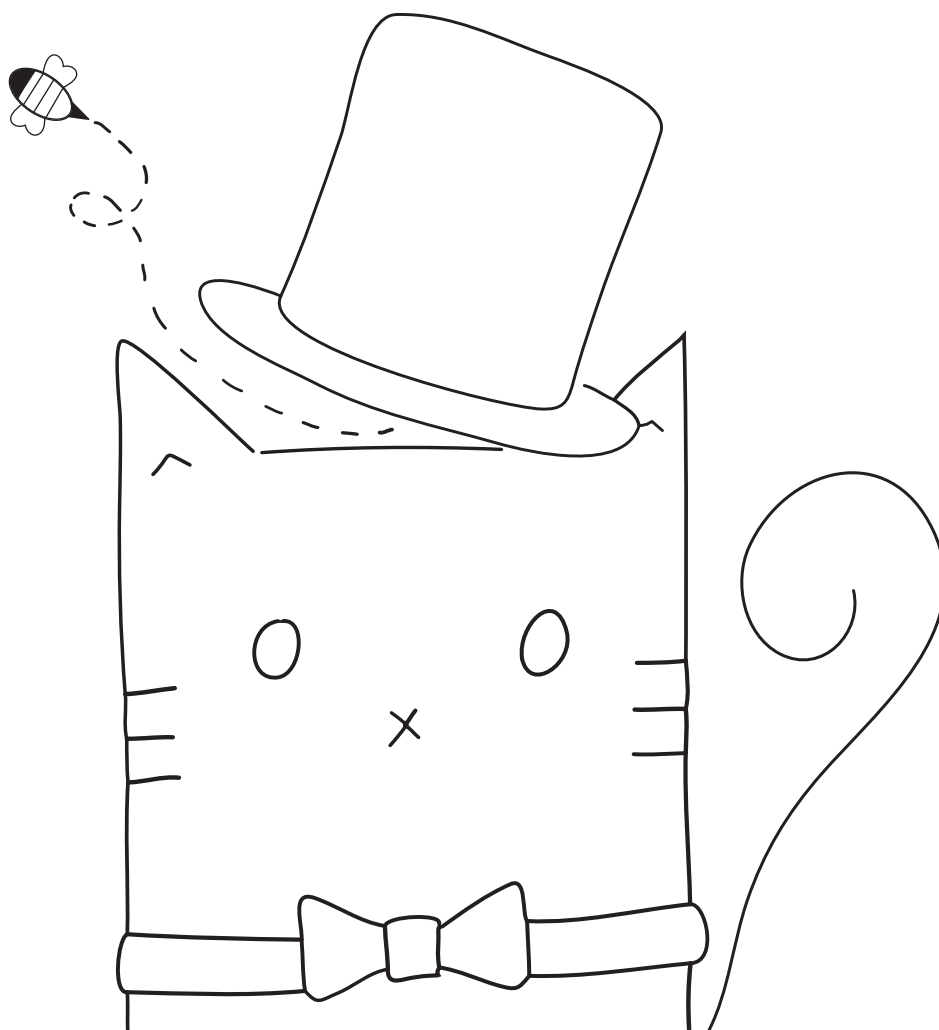
Step 7: Trace **reverse** of hat onto matte side of freezer paper. Press onto chosen material with hot dry iron (I used wool, but I included a video tutorial of how I choose to do cotton applique). Then attach to embroidery foundation with a machine or hand *blanket stitch*.

Step 8: Using MEDIUM RED floss, create distinction between the brim and the top of the kitty's hat with a *running stitch*. Then use a *backstitch* to trace the outline of his bow tie.

Step 9: *Satin stitch* the bee's body using a GOLD-EN YELLOW floss.

Step 10: With BLACK floss, *satin stitch* the bee's head, stripes, and stinger.

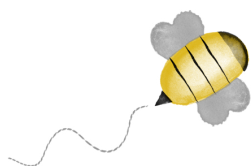
Step 11: Remove block from hoop and press with hot iron under pressing cloth or fluffy towel. Trim to 8 ½" square. If desired, machine topstitch a scant 1/8" around all sides to keep from unraveling while working on other blocks.



1 INCH
Do not print to
scale.

BEE-UTIFUL QUILT-A-LONG

by Pamela Morgan
of Sweet Little Stitches
for Moda Bake Shop



BLOCK 8 - BEE SIMPLE

All steps use 3 strands of floss unless otherwise specified.

Stitches are denoted in *italics*. Colors of thread are in ALL CAPS.

INGREDIENTS

- 10 1/2" Square Background Fabric
- Various shades of six-strand embroidery floss
- 4" or 5" Embroidery Hoop
- Hand Embroidery Needles
- Frixion or other erasable thin-lined fabric pen

Step 5: With a LIGHT GRAY, *backstitch* the bee's wings.

Step 6: Complete the bee's flight path using a *running stitch* in a VERY LIGHT GRAY floss.

Step 7: Satin stitch the bee's body using a GOLD-EN YELLOW floss.

Step 8: With BLACK floss, *satin stitch* the bee's head, stripes, and stinger.

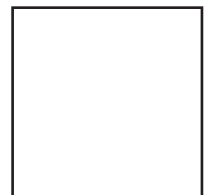
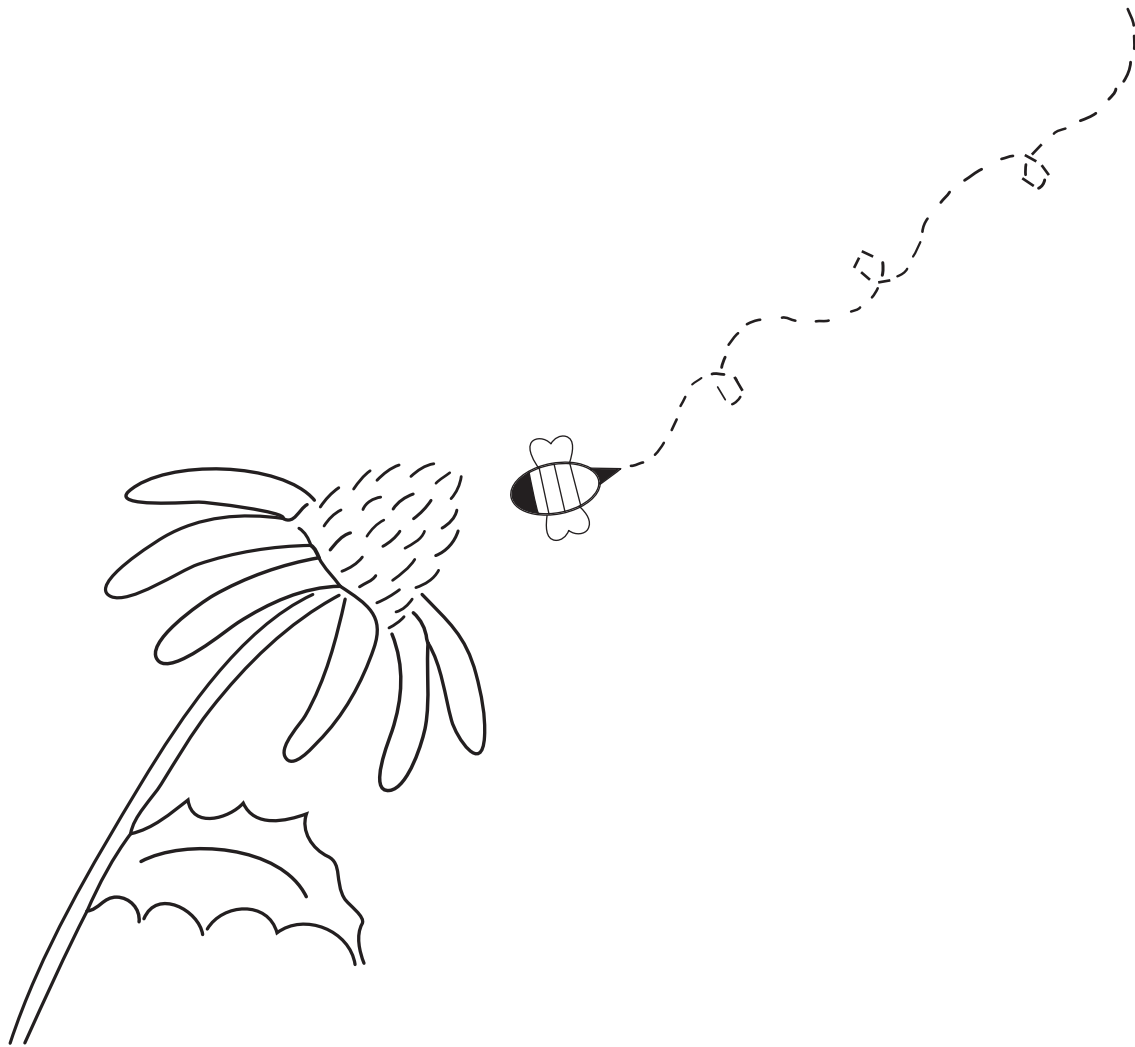
Step 9: Remove block from hoop and press with hot iron under pressing cloth or fluffy towel. Trim to 8 1/2" square. If desired, machine topstitch a scant 1/8" around all sides to keep from unraveling while working on other blocks.

Step 1: Trace block design on to background fabric using desired method.

Step 2: *Satin stitch* the flower petals using MAGENTA floss.

Step 3: Use GOLDEN YELLOW floss to make the seeds on the "cone" in the center of the flower with a small *backstitch*.

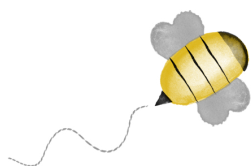
Step 4: With AVOCADO GREEN floss, stitch in between the drawn lines of the flower's stem using a *backstitch*. Then thread the floss back through (this is called a *threaded backstitch*) in an "S" shape, and tack the edges down if desired (be sure to watch my tutorial to see how I've done this stitch). Then using the same color floss, *backstitch* the outline and center vein of the leaf.



1 INCH
Do not print to
scale.

BEE-UTIFUL QUILT-A-LONG

by Pamela Morgan
of Sweet Little Stitches
for Moda Bake Shop



BLOCK 9 – BEE FRUITFUL

All steps use 3 strands of floss unless otherwise specified.

Stitches are denoted in *italics*. Colors of thread are in ALL CAPS.

INGREDIENTS

- 10 ½" Square Background Fabric
- Various shades of six-strand embroidery floss
- 4" or 5" Embroidery Hoop
- Hand Embroidery Needles
- Frixion or other erasable thin-lined fabric pen

Step 1: Trace block design on to background fabric using desired method.

Step 2: *Satin stitch* the watermelon seeds using BLACK floss. Continuing with the same floss, *satin stitch* alternating blocks of the picnic blanket. Use a more widely spaced stitch to complete these blocks, giving them a light, airy feel. Then use a *backstitch* to outline the blanket.

Step 3: Use GREEN floss to outline the watermelon rind using a *backstitch*. Then switch to a LIGHT GREEN floss and *backstitch* the stripes on the rind.

Step 4: With DARK GREEN floss, *backstitch* the grass and the clover.

Step 5: *Backstitch* the fruit of the watermelon

with RED floss.

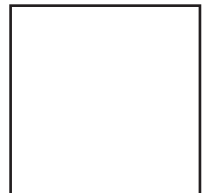
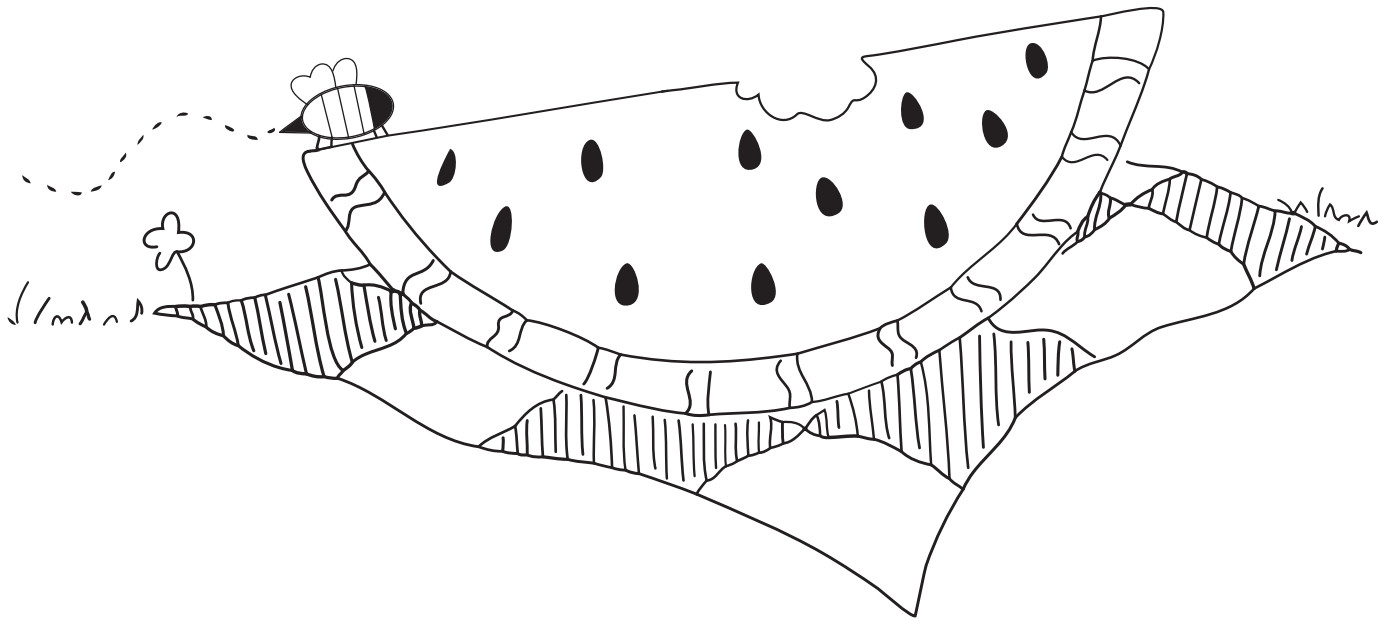
Step 6: With a LIGHT GRAY, *backstitch* the bee's wings.

Step 7: Complete the bee's flight path using a *running stitch* in a VERY LIGHT GRAY floss.

Step 8: *Satin stitch* the bee's body using a GOLD-EN YELLOW floss.

Step 9: With BLACK floss, *satin stitch* the bee's head, stripes, and stinger.

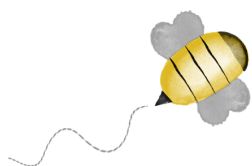
Step 10: Remove block from hoop and press with hot iron under pressing cloth or fluffy towel. Trim to 8 ½" square. If desired, machine topstitch a scant 1/8" around all sides to keep from unraveling while working on other blocks.



1 INCH
Do not print to
scale.

BEE-UTIFUL QUILT-A-LONG

by Pamela Morgan
of Sweet Little Stitches
for Moda Bake Shop



BLOCK 10 – BEE KIND

All steps use 3 strands of floss unless otherwise specified.

Stitches are denoted in *italics*. Colors of thread are in ALL CAPS.

INGREDIENTS

- 10 ½" Square Background Fabric
- Various shades of six-strand embroidery floss
- 4" or 5" Embroidery Hoop
- Hand Embroidery Needles
- Frixion or other erasable thin-lined fabric pen

Step 1: Trace block design on to background fabric using desired method.

Step 2: *Satin stitch* the bunny's eyes using BLACK FLOSS.

Step 3: Use LIGHT PINK floss and *backstitch* the bunny's inner ears and nose.

Step 4: With LIGHT GRAY floss, *backstitch* the outline of the bunny.

Step 5: *Backstitch* the bunny's whiskers with VERY LIGHT GRAY floss.

Step 6: Stitch the bees' wings using a *lazy daisy stitch* done in LIGHT GRAY FLOSS.

Step 7: Complete the bees' flight paths using a

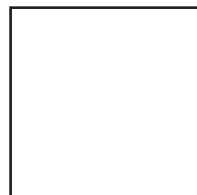
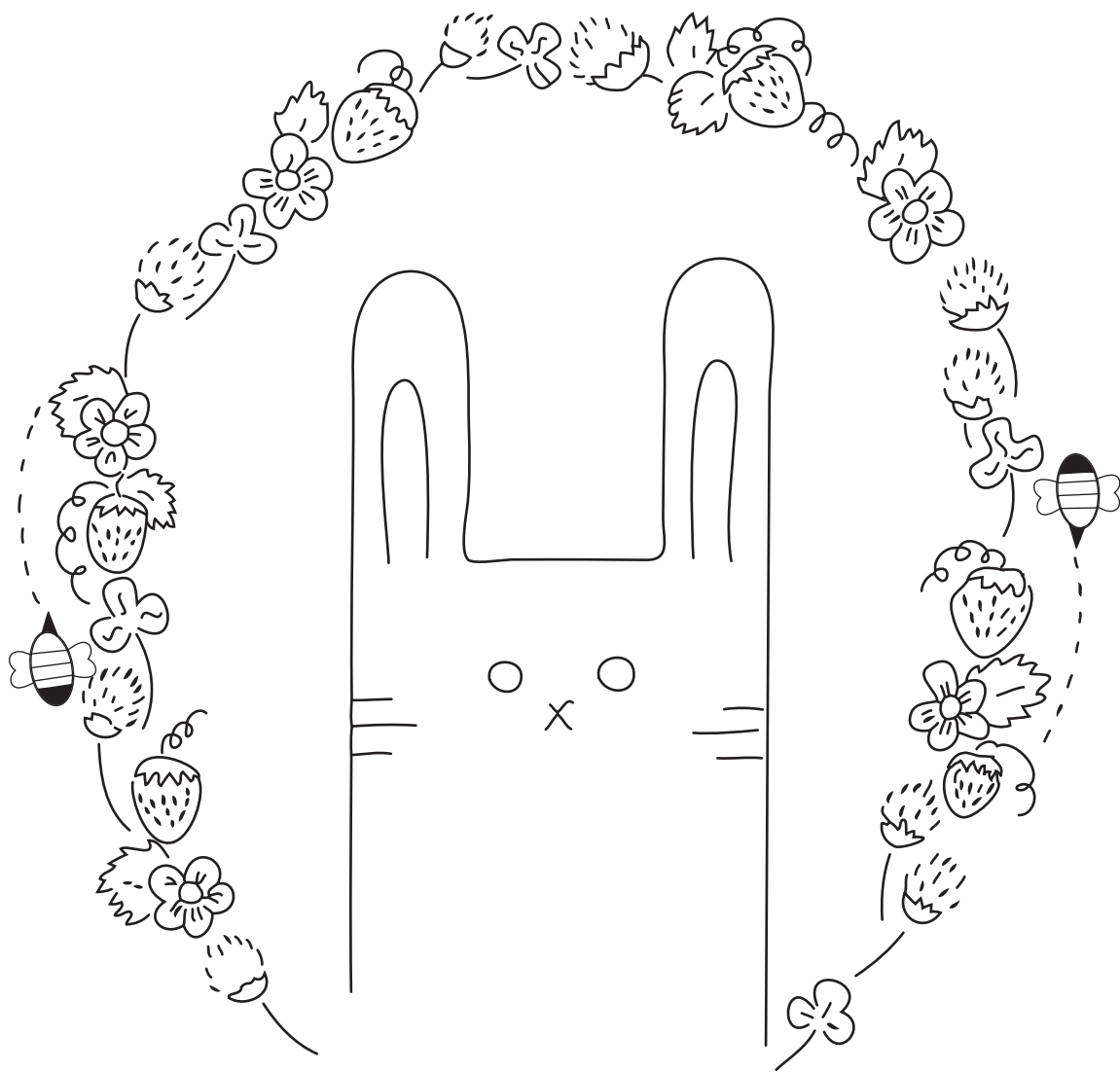
running stitch in a VERY LIGHT GRAY floss.

Step 8: *Satin stitch* the bee's body using a GOLD-EN YELLOW floss. Then, using the same floss, *satin stitch* the flowers' centers.

Step 9: With BLACK floss, *satin stitch* the bees' heads, stripes, and stingers.

Step 10: All the remaining elements of the wreath around the bunny are completed using a *backstitch*. For all of the stems and leaves, I used a VARIEGATED GREEN floss. For the clover flowers, I used a PURPLE floss. RED floss was used for the strawberries, and GOLDEN YELLOW was used for the strawberry seeds. I used a PALE YELLOW floss for the strawberry blossoms. Feel free to use colors of your own choosing. I just shared what I used as a point of reference.

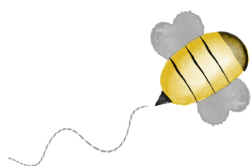
Step 11: Remove block from hoop and press with hot iron under pressing cloth or fluffy towel. Trim to 8 ½" square. If desired, machine topstitch a scant 1/8" around all sides to keep from unraveling while working on other blocks.



1 INCH
Do not print to
scale.

BEE-UTIFUL QUILT-A-LONG

by Pamela Morgan
of Sweet Little Stitches
for Moda Bake Shop



BLOCK 11 – BEE INDUSTRIOUS

All steps use 3 strands of floss unless otherwise specified.

Stitches are denoted in *italics*. Colors of thread are in ALL CAPS.

INGREDIENTS

- 10 ½" Square Background Fabric
- Various shades of six-strand embroidery floss
- 4" or 5" Embroidery Hoop
- Hand Embroidery Needles
- Frixion or other erasable thin-lined fabric pen

Step 1: Trace block design on to background fabric using desired method.

Step 2: *Backstitch* the outline of the tractor, the axle to the steering wheel, and the tractor seat using **JOHN DEERE GREEN** floss.

Step 3: Use **GOLDEN YELLOW** floss and *backstitch* the tractor wheels and the tiny ears of corn.

Step 4: With **BLACK** floss, *backstitch* the tires, the bottom section of the smokestack, the tractor grille, and the steering wheel. Then, using the same floss, *satin stitch* the holes in the small wheel.

Step 5: *Stem stitch* the smoke with **VERY LIGHT GRAY** floss.

Step 6: Use **DARK GRAY** floss to backstitch the top section of the smokestack.

Step 7: *Backstitch* the grass, using **AVOCADO GREEN** floss.

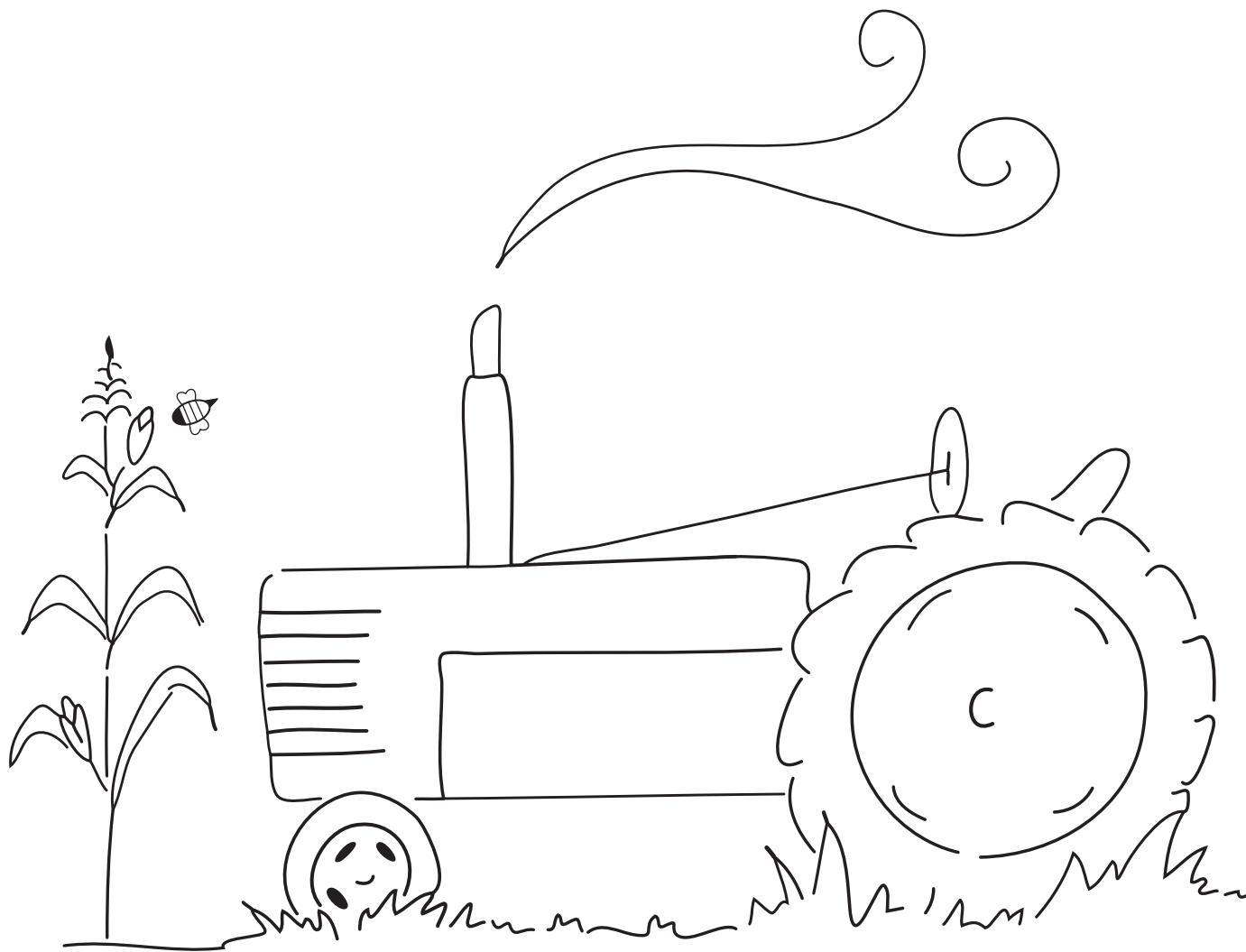
Step 8: Use a **LIGHT GREEN** floss to *backstitch* the corn stalk.

Step 9: Stitch the bee's wings using a *lazy daisy stitch* done in **LIGHT GRAY FLOSS**.

Step 10: *Satin stitch* the bee's body using a **GOLDEN YELLOW** floss.

Step 11: With **BLACK** floss, *satin stitch* the bee's head, stripes, and stinger.

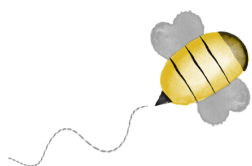
Step 12: Remove block from hoop and press with hot iron under pressing cloth or fluffy towel. Trim to 8 ½" square. If desired, machine topstitch a scant 1/8" around all sides to keep from unraveling while working on other blocks.



1 INCH
Do not print to
scale.

BEE-UTIFUL QUILT-A-LONG

by Pamela Morgan
of Sweet Little Stitches
for Moda Bake Shop



BLOCK 12 - BEE GRATEFUL

All steps use 3 strands of floss unless otherwise specified.

Stitches are denoted in *italics*. Colors of thread are in ALL CAPS.

INGREDIENTS

- 10 ½" Square Background Fabric
- Various shades of six-strand embroidery floss
- 4" or 5" Embroidery Hoop
- Hand Embroidery Needles
- Frixion or other erasable thin-lined fabric pen
- 2" scrap black hand-dyed wool

Step 1: Trace block design on to background fabric using desired method.

Step 2: *Backstitch* the outline of the beehive, using **LIGHT BROWN** floss. Using the same floss, trace the lines in the center section of the hive with a *running stitch*.

Step 3: Stitch the sunflower petals using a *lazy daisy stitch* done with **GOLDEN YELLOW** floss.

Step 4: With **DARK BROWN** floss, fill the centers of the sunflowers using very densely spaced *french knots*.

Step 5: *Backstitch* the leaves of the sunflower, and the stems and petals of the clovers with **AVOCADO GREEN** floss.

Step 6: Use **PURPLE** floss to *backstitch* the clover flowers.

Step 7: *Backstitch* the grass, using **AVOCADO GREEN** floss.

Step 8: *Satin stitch* the bee's body using a **GOLD-EN YELLOW** floss.

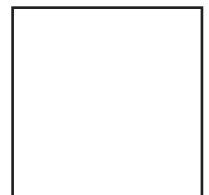
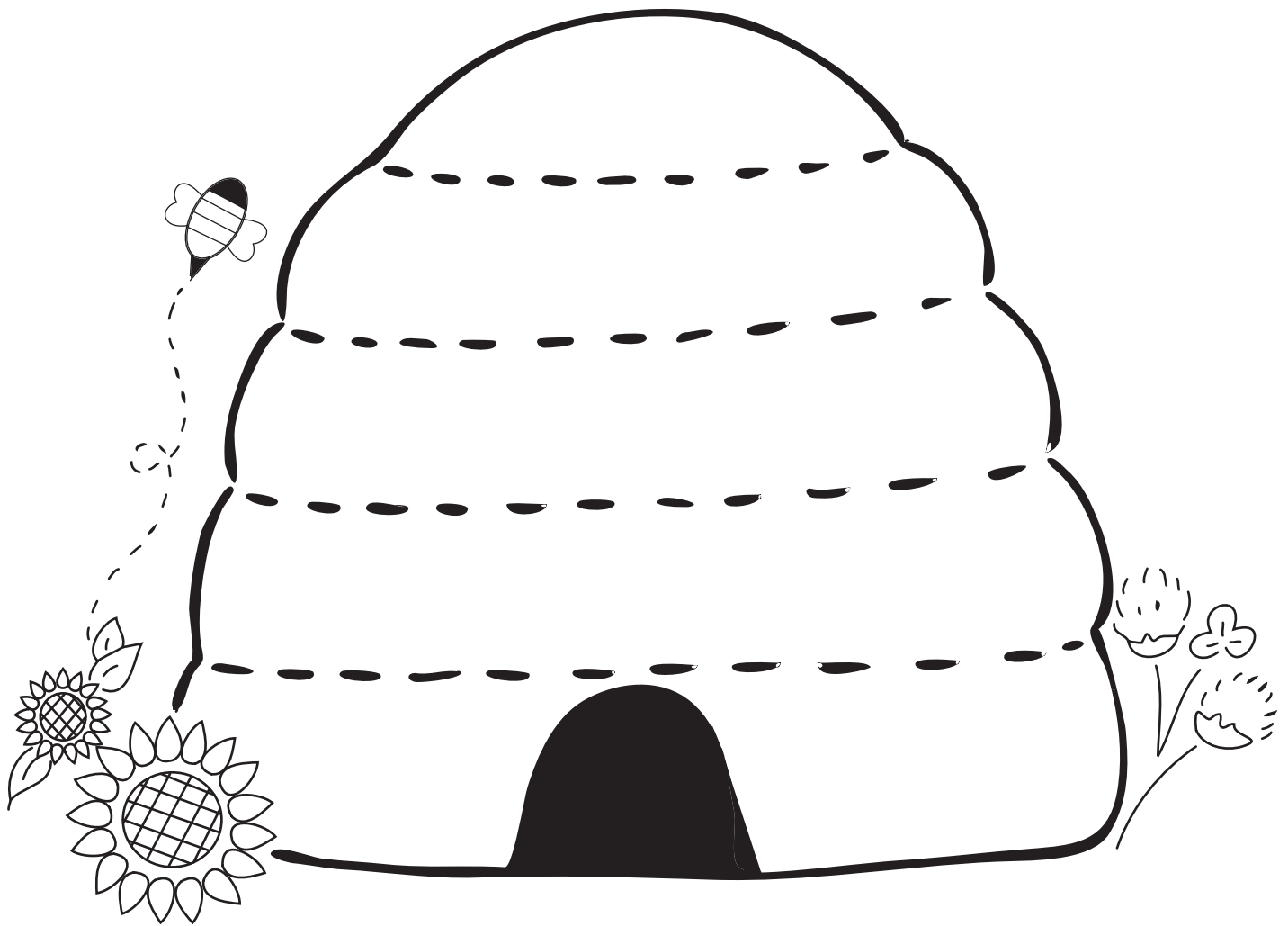
Step 9: Stitch the bee's wings using a *backstitch* done in **LIGHT GRAY** floss.

Step 10: Use **VERY LIGHT GRAY** floss and a *running stitch* for the bee's path.

Step 11: With **BLACK** floss, *satin stitch* the bee's head, stripes, and stinger.

Step 12: Trace the **REVERSE** of the hive entrance onto freezer paper, the press with a hot iron to back side of wool scrap. Cut out, remove freezer paper, and glue baste into position. Machine or hand applique to block using preferred stitch.

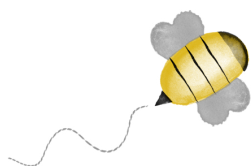
Step 13: Remove block from hoop and press with hot iron under pressing cloth or fluffy towel. Trim to 8 ½" square. If desired, machine topstitch a scant 1/8" around all sides to keep from unraveling while working on other blocks.



1 INCH
Do not print to
scale.

BEE-UTIFUL QUILT-A-LONG

by Pamela Morgan
of Sweet Little Stitches
for Moda Bake Shop



BLOCK 13 - BEE ROMANTIC

All steps use 3 strands of floss unless otherwise specified.

Stitches are denoted in *italics*. Colors of thread are in ALL CAPS.

INGREDIENTS

- 10 1/2" Square Background Fabric
- Various shades of six-strand embroidery floss
- 4" or 5" Embroidery Hoop
- Hand Embroidery Needles
- Frixion or other erasable thin-lined fabric pen

Step 1: Trace block design on to background fabric using desired method.

Step 2: *Backstitch* the frame of the bicycle and the road using BLACK floss.

Step 3: Outline the seat and the basket using a *backstitch* done in DARK GRAY floss.

Step 4: With LIGHT GRAY floss, *backstitch* the spokes, the tire rim, the spring, pedal, and handles. Then using the same thread, *satin stitch* the small circle at the joint where the bicycle meets the wheels.

Step 5: *Backstitch* the outline of the tire with LIGHT GRAY floss (I choose this color to simulate a white wall tire).

Step 6: I used a variety of colors and stitches for the flowers, keeping them similar to the colors in my bridal bouquet. Feel free to get creative with your bicycle bouquet!

Step 7: Use a *satin stitch* and GOLDEN YELLOW floss for the bees' bodies.

Step 8: With BLACK floss, *satin stitch* the bees' heads, stripes, and stingers.

Step 9: *Backstitch* the bees' wings with LIGHT GRAY floss.

Step 10: Use a *running stitch* done with VERY LIGHT GRAY floss for the bees' flight paths.

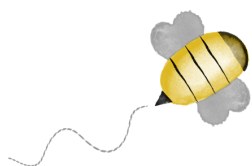
Step 11: Remove block from hoop and press with hot iron under pressing cloth or fluffy towel. Trim to 8 1/2" square. If desired, machine topstitch a scant 1/8" around all sides to keep from unraveling while working on other blocks.



1 INCH
Do not print to
scale.

BEE-UTIFUL QUILT-A-LONG

by Pamela Morgan
of Sweet Little Stitches
for Moda Bake Shop



BLOCK 14 - BEE GOOD

All steps use 3 strands of floss unless otherwise specified.

Stitches are denoted in *italics*. Colors of thread are in ALL CAPS.

INGREDIENTS

- 10 ½" Square Background Fabric
- Various shades of six-strand embroidery floss
- 4" or 5" Embroidery Hoop
- Hand Embroidery Needles
- Frixion or other erasable thin-lined fabric pen

Step 6: Use DARK BROWN floss to complete the center of the flowers using a *french knot*.

Step 7: With BLACK floss, *satin stitch* the bees' heads, stripes, and stingers. Use a *backstitch* for the bee's legs.

Step 8: *Backstitch* the bees' wings with LIGHT GRAY floss.

Step 9: Use a *running stitch* done with VERY LIGHT GRAY floss for the bee's flight path.

Step 10: Remove block from hoop and press with hot iron under pressing cloth or fluffy towel. Trim to 8 ½" square. If desired, machine topstitch a scant 1/8" around all sides to keep from unraveling while working on other blocks.

Step 1: Trace block design on to background fabric using desired method.

Step 2: *Backstitch* the outline of the honey pot, its lid, and the hive on the pot using a LIGHT BROWN floss.

Step 3: Outline the honey dipper using a backstitch done in MEDIUM BEIGE floss.

Step 4: With DARK BROWN floss, *backstitch* the word honey and the table the honeypot is resting on.

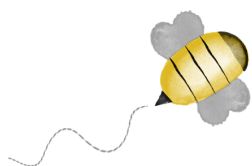
Step 5: *Backstitch* the drop of honey with GOLD-EN YELLOW floss. Using the same floss, *satin stitch* the diamond in the center of the O in honey, and the bees' bodies. Then stitch the flower petals using a *lazy daisy stitch*.



1 INCH
Do not print to
scale.

BEE-UTIFUL QUILT-A-LONG

by Pamela Morgan
of Sweet Little Stitches
for Moda Bake Shop



BLOCK 15 - BEE COURAGEOUS

All steps use 3 strands of floss unless otherwise specified.

Stitches are denoted in *italics*. Colors of thread are in ALL CAPS.

INGREDIENTS

- 10 ½" Square Background Fabric
- Various shades of six-strand embroidery floss
- 4" or 5" Embroidery Hoop
- Hand Embroidery Needles
- Frixion or other erasable thin-lined fabric pen

Step 1: Trace block design on to background fabric using desired method.

Step 2: *Backstitch* the outline and folds of the cupcake liner using **PINK** floss. Using the same floss, *backstitch* the kitty's nose and inner ears.

Step 3: Outline the cake portion of the cupcake and the outer portion of the strawberry blossom using a *backstitch* done in **LIGHT YELLOW** floss.

Step 4: With **LIGHT PINK** floss, *backstitch* the icing on the cupcake.

Step 5: *Backstitch* the table the cupcake is resting on with **MEDIUM BEIGE** floss.

Step 6: Use **RED** floss to *backstitch* the strawberry.

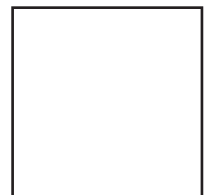
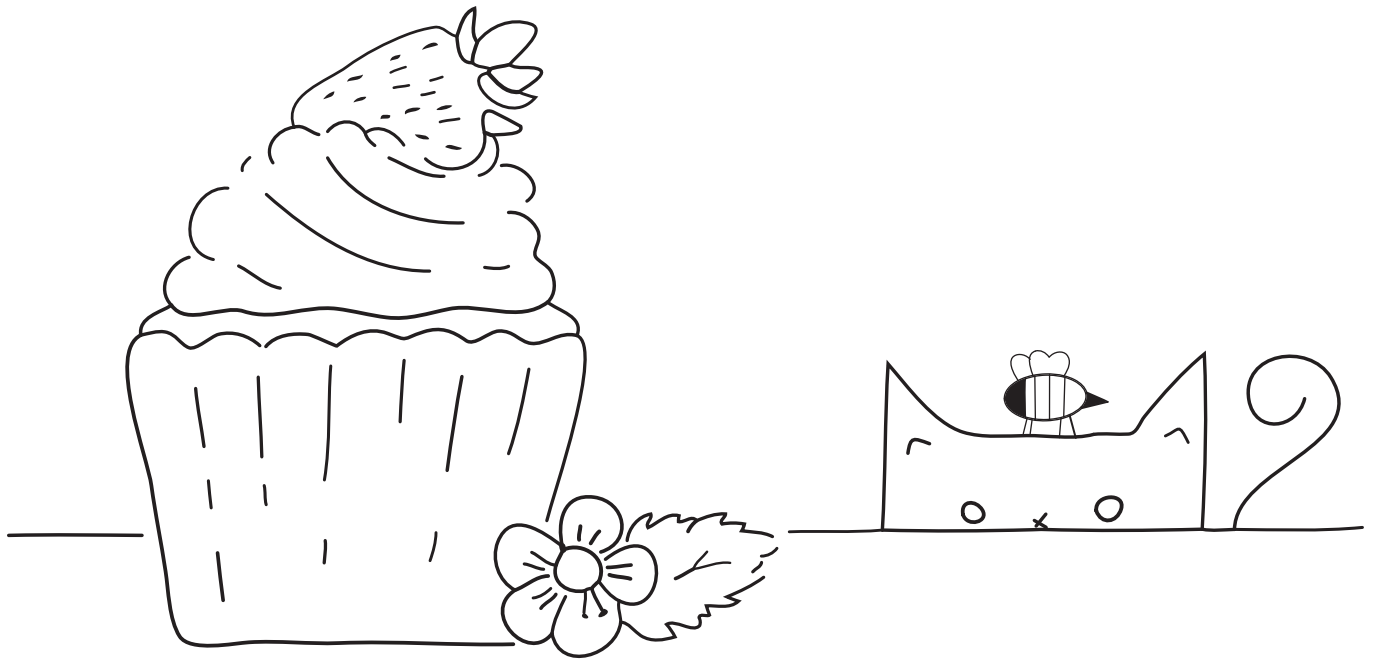
Step 7: With **AVOCADO GREEN** floss, *backstitch* the top of the strawberry and the leaves of the blossom.

Step 8: Using **GOLDEN YELLOW** floss, *backstitch* the strawberry seeds and the veins of the flower petals. With the same floss, *satin stitch* the flower center and the bee's body.

Step 9: Use a *stem stitch* done with **BLACK** floss for the cat's tail. Then use the same floss and outline the cat using a *backstitch*. Also use a *backstitch* done in **BLACK** floss for the bee's little legs. Then switch to a *satin stitch* for the bee's head, stripes, and stinger.

Step 10: With **LIGHT GREEN** floss, *satin stitch* the kitty's eyes.

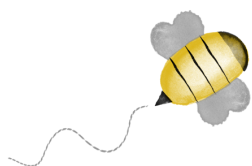
Step 11: Remove block from hoop and press with hot iron under pressing cloth or fluffy towel. Trim to 8 ½" square. If desired, machine topstitch a scant 1/8" around all sides to keep from unraveling while working on other blocks.



1 INCH
Do not print to
scale.

BEE-UTIFUL QUILT-A-LONG

by Pamela Morgan
of Sweet Little Stitches
for Moda Bake Shop



BLOCK 16 – BEE SUNNY

All steps use 3 strands of floss unless otherwise specified.

Stitches are denoted in *italics*. Colors of thread are in ALL CAPS.

INGREDIENTS

- 10 ½" Square Background Fabric
- 3" Square Coordinating Fabric
- Various shades of six-strand embroidery floss
- 4" or 5" Embroidery Hoop
- Hand Embroidery Needles
- Frixion or other erasable thin-lined fabric pen

GRAY floss for the bees' flight paths.

Step 7: Using your favorite method, trace the kite shape and applique to background fabric with BLACK floss and a *blanket stitch*. (Note: Can also be done with a machine blanket stitch and black thread.)

Step 8: Remove block from hoop and press with hot iron under pressing cloth or fluffy towel. Trim to 8 ½" square. If desired, machine topstich a scant 1/8" around all sides to keep from unraveling while working on other blocks.

Step 1: Trace block design on to background fabric using desired method.

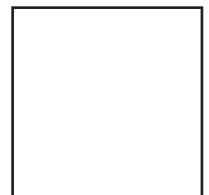
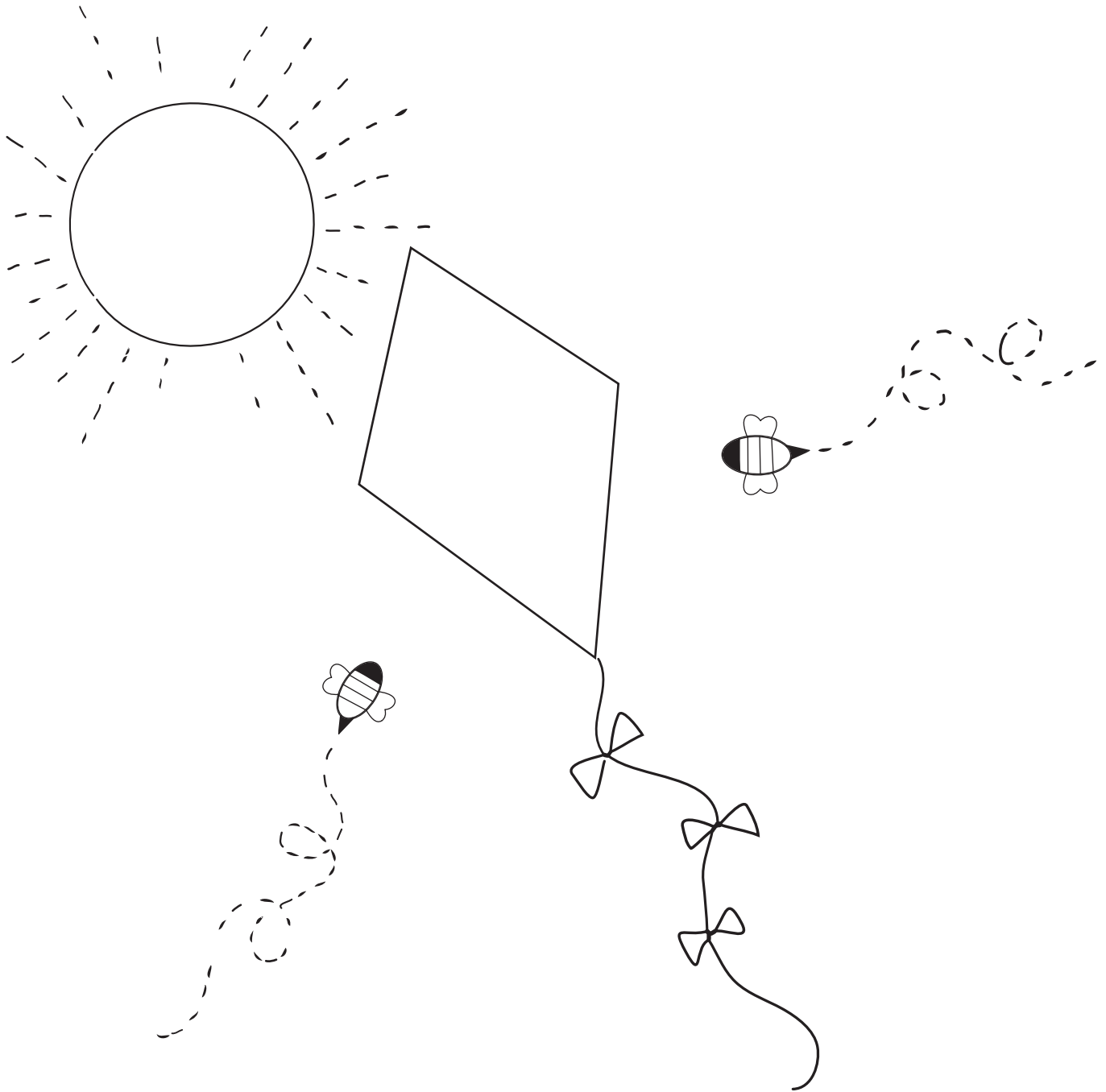
Step 2: *Backstitch* the center of the sun using GOLDEN YELLOW floss. Then, with the same floss, use a *running stitch* for the rays.

Step 3: Continue with the GOLDEN YELLOW floss. *Satin stitch* the bees' bodies and the bows on the kite's tail.

Step 4: With BLACK floss, *satin stitch* the bees' heads, tails, and stingers. *Backstitch* the kite tail using the same floss.

Step 5: Using LIGHT GRAY floss, *backstitch* the bees' wings.

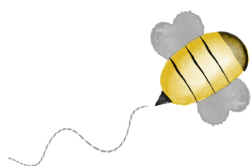
Step 6: Use a *running stitch* done in VERY LIGHT



1 INCH
Do not print to
scale.

BEE-UTIFUL QUILT-A-LONG

by Pamela Morgan
of Sweet Little Stitches
for Moda Bake Shop



BLOCK 17 - BEE HAPPY

All steps use 3 strands of floss unless otherwise specified.

Stitches are denoted in *italics*. Colors of thread are in ALL CAPS.

INGREDIENTS

- 10 ½" Square Background Fabric
- 5 Small scraps hand-dyed wool (optional)
- Various shades of six-strand embroidery floss
- 4" or 5" Embroidery Hoop
- Hand Embroidery Needles
- Frixion or other erasable thin-lined fabric pen

Step 5: Using LIGHT GRAY floss, *backstitch* the bees' wings.

Step 6: Use a *running stitch* done in VERY LIGHT GRAY floss for the bees' flight paths.

Step 7: With GOLDEN YELLOW floss, *satin stitch* the bees' bodies.

Step 8: Using BLACK floss, *satin stitch* the bees' heads, stripes, and stingers.

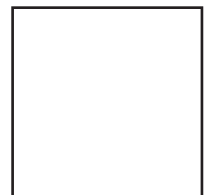
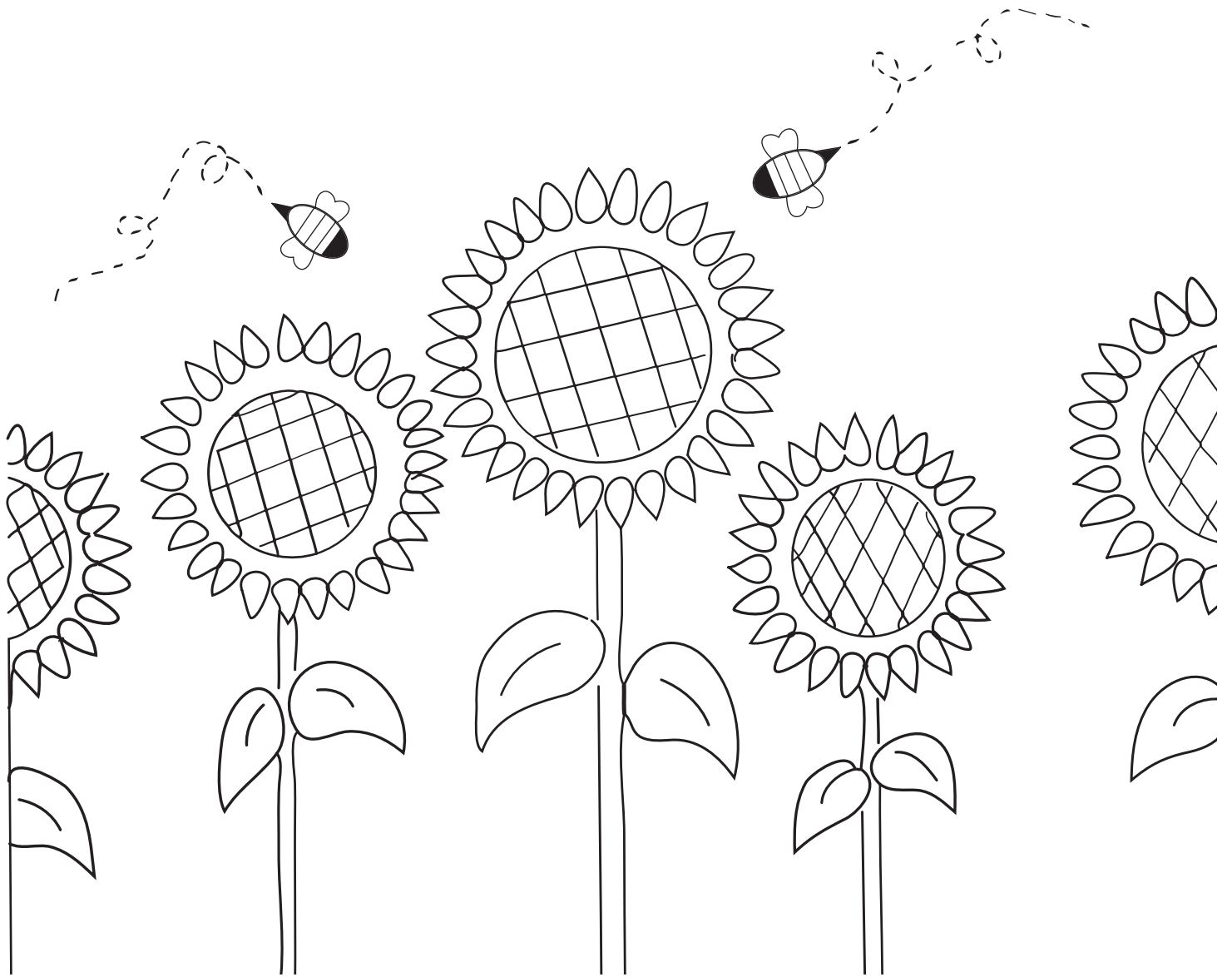
Step 9: Remove block from hoop and press with hot iron under pressing cloth or fluffy towel. Trim to 8 ½" square. If desired, machine topstitch a scant 1/8" around all sides to keep from unraveling while working on other blocks.

Step 1: Trace block design on to background fabric using desired method.

Step 2: Applique small circles of wool to flower centers using desired method. Attach to background fabric using either machine or hand *blanket stitch* done in BLACK floss. If desired, this step can be skipped, and you can fill the flower centers with stitches of your choosing.

Step 3: *Backstitch* the sunflower petals. I used GOLDEN YELLOW, BURNT ORANGE, and BURGUNDY floss. Feel free to make your own color selections.

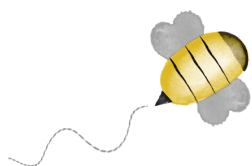
Step 4: Use AVOCADO GREEN floss and a *threaded backstitch* for the sunflower stems. Continue with the same floss and *backstitch* the leaves and their veins.



1 INCH
Do not print to
scale.

BEE-UTIFUL QUILT-A-LONG

by Pamela Morgan
of Sweet Little Stitches
for Moda Bake Shop



BLOCK 18 - BEE BOUNTIFUL

All steps use 3 strands of floss unless otherwise specified.

Stitches are denoted in *italics*. Colors of thread are in ALL CAPS.

INGREDIENTS

- 10 1/2" Square Background Fabric
- Various shades of six-strand embroidery floss
- 4" or 5" Embroidery Hoop
- Hand Embroidery Needles
- Frixion or other erasable thin-lined fabric pen

Step 5: Using LIGHT GRAY floss, stitch the bee's wings using a *lazy daisy stitch*.

Step 6: Use a *running stitch* done in VERY LIGHT GRAY floss for the bee's flight path.

Step 7: With GOLDEN YELLOW floss, *satin stitch* the bees' bodies.

Step 8: Using BLACK floss, *satin stitch* the bees' heads, stripes, and stingers.

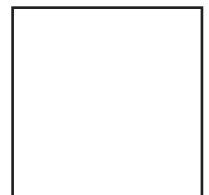
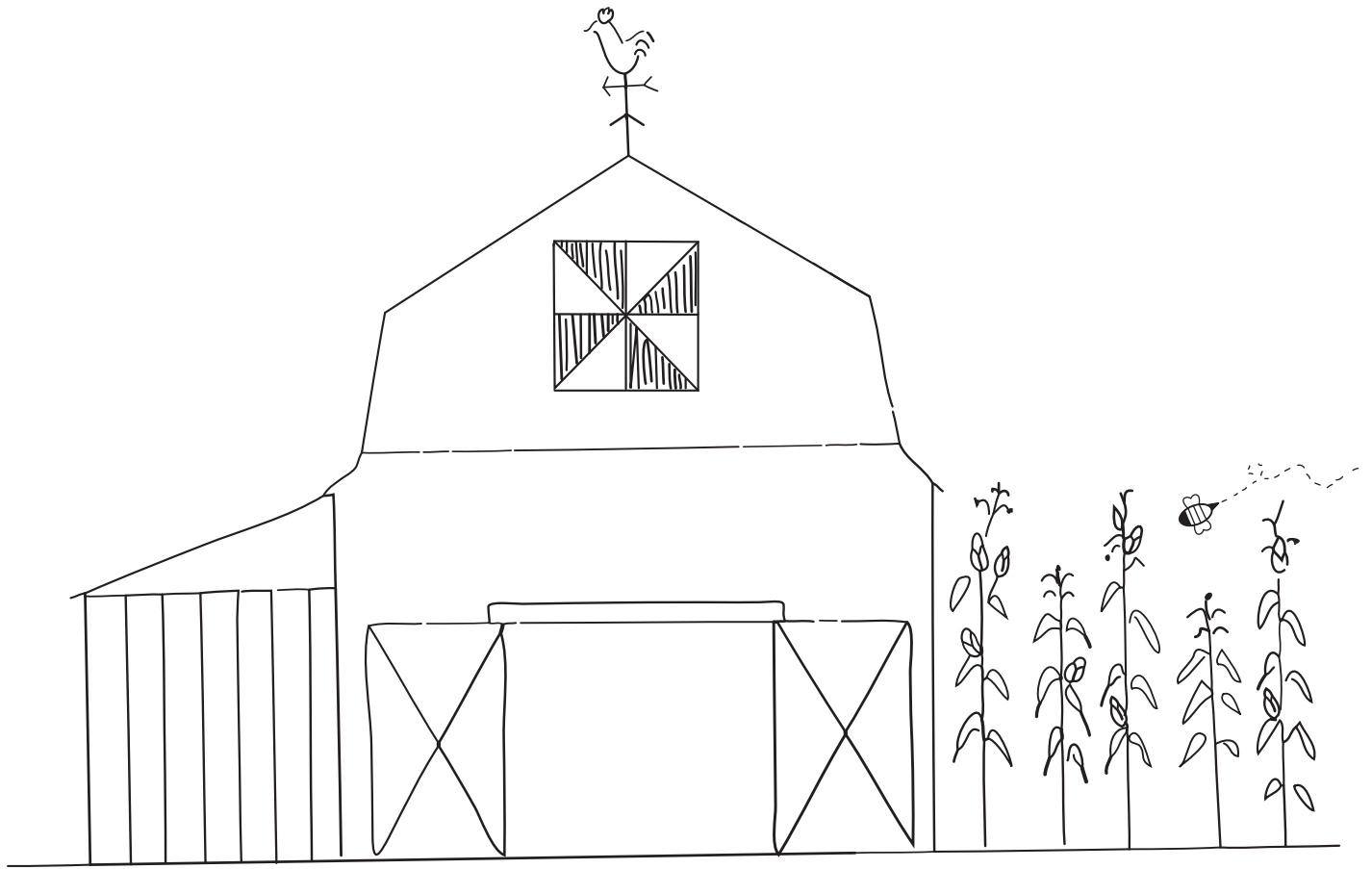
Step 9: Remove block from hoop and press with hot iron under pressing cloth or fluffy towel. Trim to 8 1/2" square. If desired, machine topstitch a scant 1/8" around all sides to keep from unraveling while working on other blocks.

Step 1: Trace block design on to background fabric using desired method.

Step 2: *Backstitch* the barn in its entirety using RED floss. Then, using the same color floss, *satin stitch* the pinwheel on the barn quilt. With BLACK floss, outline the satin stitching and then the remainder of the barn quilt using a *backstitch*.

Step 3: With BLACK floss, *backstitch* the weathervane, with the exception of the cockscomb. For this part, switch back to RED floss and use a *lazy daisy stitch*.

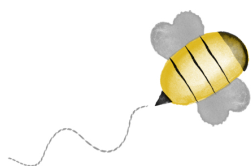
Step 4: Use AVOCADO GREEN floss and *backstitch* the cornstalks, leaves, and grassline. Switch to GOLDEN YELLOW floss and *satin stitch* the tiny ears of corn.



1 INCH
Do not print to
scale.

BEE-UTIFUL QUILT-A-LONG

by Pamela Morgan
of Sweet Little Stitches
for Moda Bake Shop



BLOCK 19 – BEE ADVENTUROUS

All steps use 3 strands of floss unless otherwise specified.

Stitches are denoted in *italics*. Colors of thread are in ALL CAPS.

INGREDIENTS

- 10 ½" Square Background Fabric
- Various shades of six-strand embroidery floss
- 4" or 5" Embroidery Hoop
- Hand Embroidery Needles
- Frixion or other erasable thin-lined fabric pen

Step 1: Trace block design on to background fabric using desired method.

Step 2: *Backstitch* the body of the pickup truck with MINT GREEN floss.

Step 3: With BLACK floss, *satin stitch* the tires.

Step 4: Use MEDIUM GRAY floss to *backstitch* the license plate and the roadway. Then, using the same floss, fill in the driver's side window with a widely spaced *satin stitch*.

Step 5: Using LIGHT GRAY floss, stitch the bee's wings using a *lazy daisy stitch*. Switch to a satin stitch for the gas cap, side mirror, and windshield wipers. Use a widely spaced satin stitch for the grill. Then, still using the same floss, *backstitch* the hubcaps, running board, outer edge of the

grill, hood ornament, door handle, and headlights.

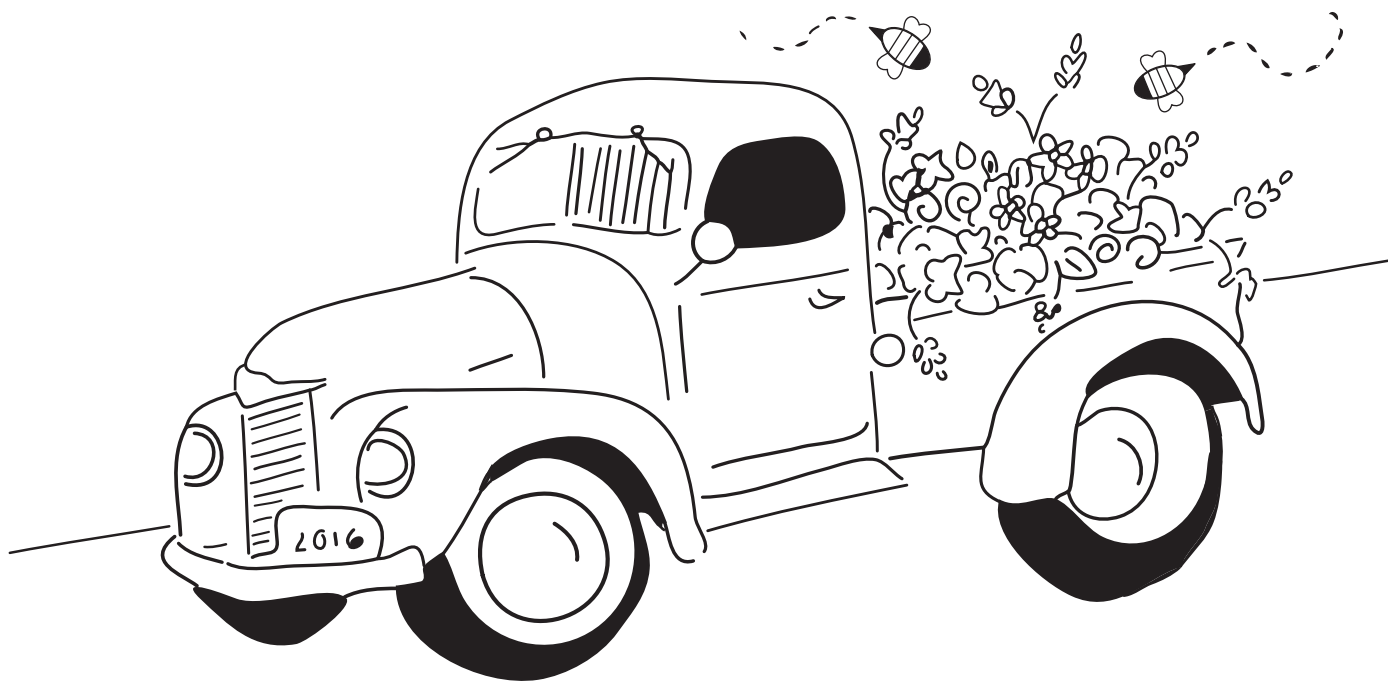
Step 6: Use a *running stitch* done in VERY LIGHT GRAY floss for the bees' flight paths.

Step 7: With GOLDEN YELLOW floss, *satin stitch* the bees' bodies.

Step 8: Using BLACK floss, *satin stitch* the bees' heads, stripes, and stingers.

Step 9: Fill in the bed of the truck by completing the flowers using stitching and colors of your choosing. *BEE CREATIVE!*

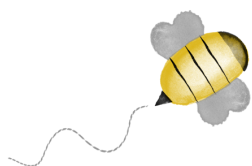
Step 10: Remove block from hoop and press with hot iron under pressing cloth or fluffy towel. Trim to 8 ½" square. If desired, machine topstitch a scant 1/8" around all sides to keep from unraveling while working on other blocks.



1 INCH
Do not print to
scale.

BEE-UTIFUL QUILT-A-LONG

by Pamela Morgan
of Sweet Little Stitches
for Moda Bake Shop



BLOCK 20 – BEE FRIENDLY

All steps use 3 strands of floss unless otherwise specified.

Stitches are denoted in *italics*. Colors of thread are in ALL CAPS.

INGREDIENTS

- 10 ½" Square Background Fabric
- Various shades of six-strand embroidery floss
- 4" or 5" Embroidery Hoop
- Hand Embroidery Needles
- Frixion or other erasable thin-lined fabric pen

Step 6: With **AVOCADO GREEN** floss, *backstitch* the stems, leaves, and vines.

Step 7: Using **RED** floss, outline the strawberry with a *backstitch*.

Step 8: *Backstitch* the clover blossoms using **PURPLE** floss.

Step 9: *Satin stitch* the bees' heads, stripes, and stingers using black floss.

Step 10: Remove block from hoop and press with hot iron under pressing cloth or fluffy towel. Trim to 8 ½" square. If desired, machine topstitch a scant 1/8" around all sides to keep from unraveling while working on other blocks.

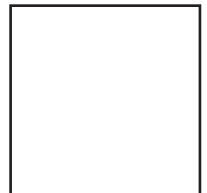
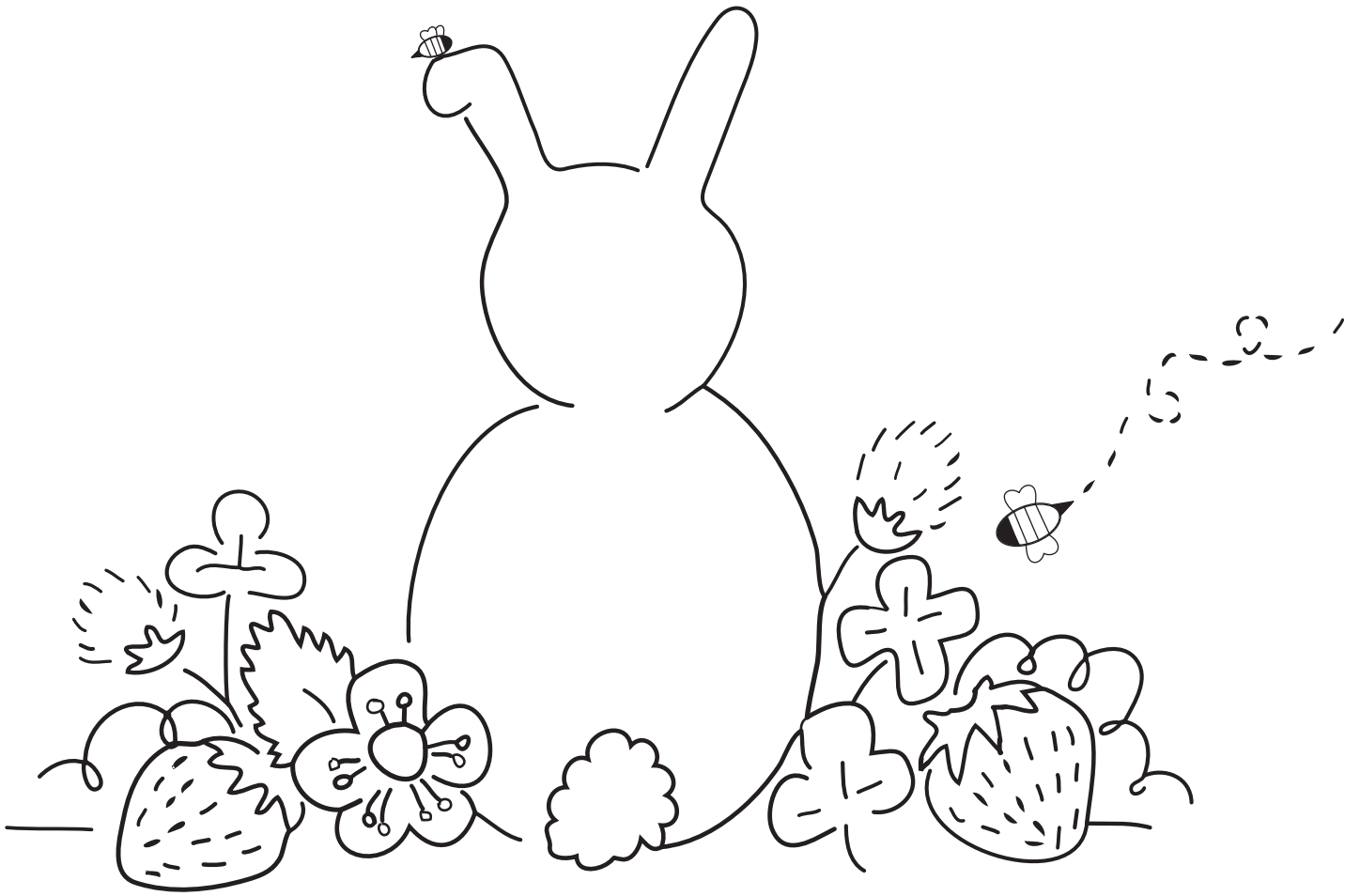
Step 1: Trace block design on to background fabric using desired method.

Step 2: *Backstitch* the line that the bunny is sitting on with **MEDIUM GRAY** floss.

Step 3: With **LIGHT GRAY** floss, *backstitch* the bunny's body and the flying bee's wings. Then use the same floss and a *lazy daisy stitch* for the tiny bee's (on the bunny's ear) wings.

Step 4: Using **VERY LIGHT GRAY** floss, *backstitch* the bunny's tail. Then use the same floss and a *running stitch* for the bee's flight path.

Step 5: *Satin stitch* the flower center and the bees' bodies using **GOLDEN YELLOW** floss. Then use a *backstitch* for the veins in the petals and the strawberry seeds.



1 INCH
Do not print to
scale.