

moda BAKE SHOP



Moderate

Your finished quilt will measure approximately 48" x 60".

Ingredients:

1 Layer Cake® {[Silver Linings in Colors by Laundry Basket Quilts](#)}

¾ yard light accent fabric

¾ yard dark accent fabric

1½ yard background fabric (*shown as light teal in this quilt*)

½ yard binding fabric

3¼ yard backing fabric

Instructions:

All seams are scant ¼". WOF = width of fabric

CUTTING

- Select 20 Layer Cake® squares for the main print in each block. Trim down to (20) 6½" squares.
- From each of 7 light Layer Cake® squares, cut (5) 2" x 10" strips.
- From each of 7 dark Layer Cake® squares, cut (5) 2" x 10" strips.
- From light accent fabric, cut (7) 3½" x WOF strips. Subcut each strip into (12) 3½" squares.
- From dark accent fabric, cut (7) 3½" x WOF strips. Subcut each strip into (12) 3½" squares.
- From background fabric, cut (14) 3½" x WOF strips. Subcut each strips into (6) 3½" x 6½" rectangles.

PIECING

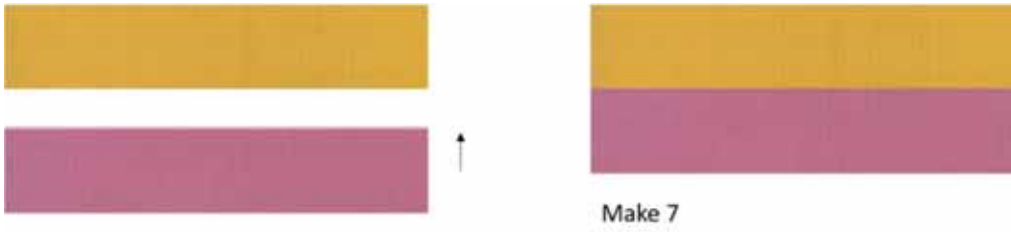
Choose two contrasting Layer Cake® strips. With right sides together, sew along the long side. Press to towards the darker fabric. Repeat to join all light/dark strip sets.

11/29/2016

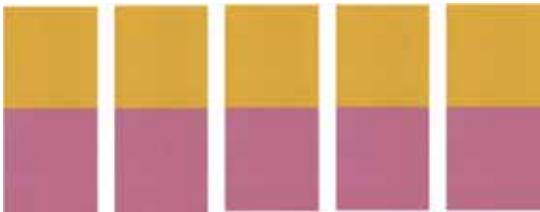
Original Recipe can be found at www.modabakeshop.com

Recipes are sometimes altered to correct errors. Please ensure that you have downloaded the most recent Printer Friendly Version before starting your project. If you find a mistake in this pattern, please contact modabakeshop@unitednotions.com.

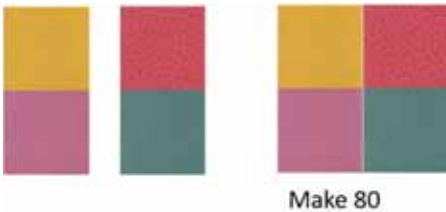
This is an original pattern not intended for sale.



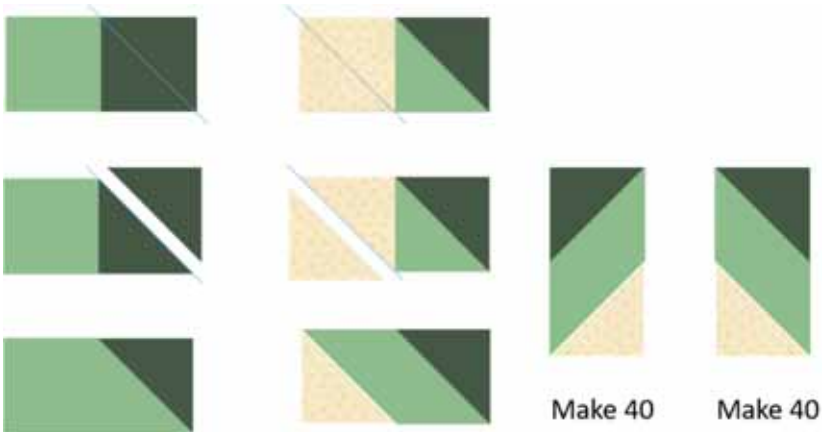
Cut each strip set into (5) 2" segments.



Combine 2-patches to create (80) 4-patches. You will have extra.



Draw a diagonal line across the wrong side of each light and dark accent fabric square. Place one dark accent fabric square on a background fabric rectangle, right sides together. Sew along the pencil line. Trim 1/4" away from the seam and press. Repeat on the opposite corner with a light accent fabric square.



Make 40 of each mirror image block.
Assemble the block as shown below. Make 20 blocks.

11/29/2016

Original Recipe can be found at www.modabakeshop.com

Recipes are sometimes altered to correct errors. Please ensure that you have downloaded the most recent Printer Friendly Version before starting your project. If you find a mistake in this pattern, please contact modabakeshop@unitednotions.com.

This is an original pattern not intended for sale.



Assemble the quilt top following the layout shown below.



Layer, baste, and quilt as desired.

Yield:

Your finished quilt will measure approximately 48" x 60".

Oda May

Adapted from *Sunny Trails* by Corey Yoder.

11/29/2016

Original Recipe can be found at www.modabakeshop.com

Recipes are sometimes altered to correct errors. Please ensure that you have downloaded the most recent Printer Friendly Version before starting your project. If you find a mistake in this pattern, please contact modabakeshop@unitednotions.com.

This is an original pattern not intended for sale.