

Applesauce



by Lauren Terry for Moda Bakeshop - brightsonwhite.com

- Fabric Requirements -

- 1 Layer Cake (or 24 squares 10"x10")
- 2 1/2 yards neutral fabric
- 3/4 yards for the "X" blocks
- 1 1/4 yards for the border
- 3/4 yards for binding
- 3 1/2 yards for backing



- Cut List -

From the Layer Cake:

- pick 8 squares (for the inner pinwheel) and cut down to 7" x 7"
- pick 15 squares (for the flying geese that frame the pinwheel) and from each cut 4 squares measuring 3 1/2" x 3 1/2"

From "X" block fabric cut:

- 60 strips measuring 1 1/2" x 10"

From neutral fabric, cut:

- 15 squares 6 1/4" x 6 1/4"
- 8 squares 7" x 7"
- 60 squares 3" x 3"
- 60 squares 5 1/2" x 5 1/2"



- Pinwheels -

- Draw an X on the back of each 7" square
- Place patterned 7" square on top with right sides together
- Sew a 1/4" seam on either side of the lines you drew (you'll make 4 seams total)
- Press the piece to set the seam
- Now we'll make 4 cuts to create 8 half square triangles. First, cut on both the lines you drew, then cut down the middle horizontally and vertically
- Square pieces up to 3" x 3"
- Sew into pinwheels till you have 15, with 4 half square triangles left over



- Flying Geese -



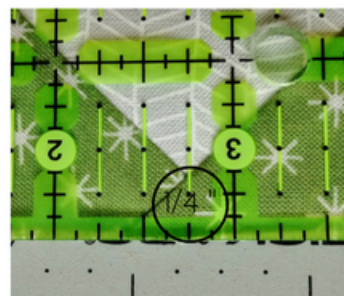
- To begin your flying geese, draw a diagonal line on all of your 3 1/2" x 3 1/2" patterned squares
- Grab a neutral 6 1/4" x 6 1/4" square
- Lay two 3 1/2" squares so the diagonal lines touch and form one long line. Sew a 1/4" seam on either side of the diagonal lines you drew.
- Cut along the line in the middle (the solid line in picture above)



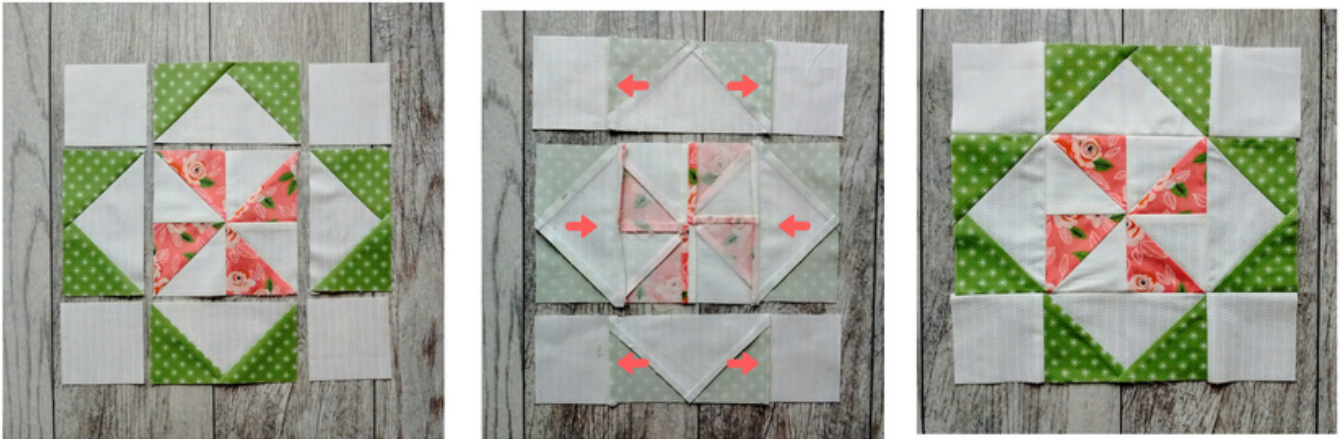
- Press the patterned pieces open
- Place a 3.5" squares with the diagonal line going down the middle of the piece
- Sew a 1/4" seam on either side of the line
- Cut on the solid line



- Square the flying geese up so they are 3" x 5 1/2"
- You'll want to leave cut it so there is a 1/4" between the bottom of the "V" the fabric makes and the edge of the piece



- Block Assembly -

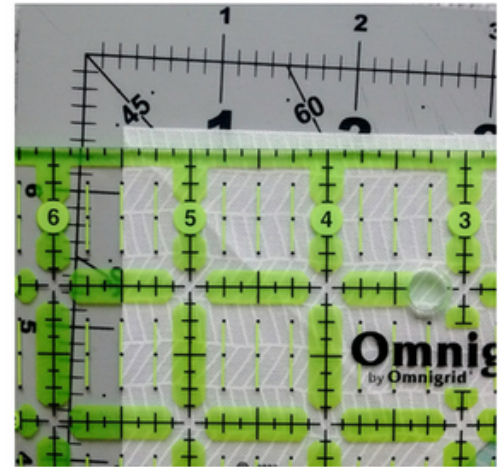
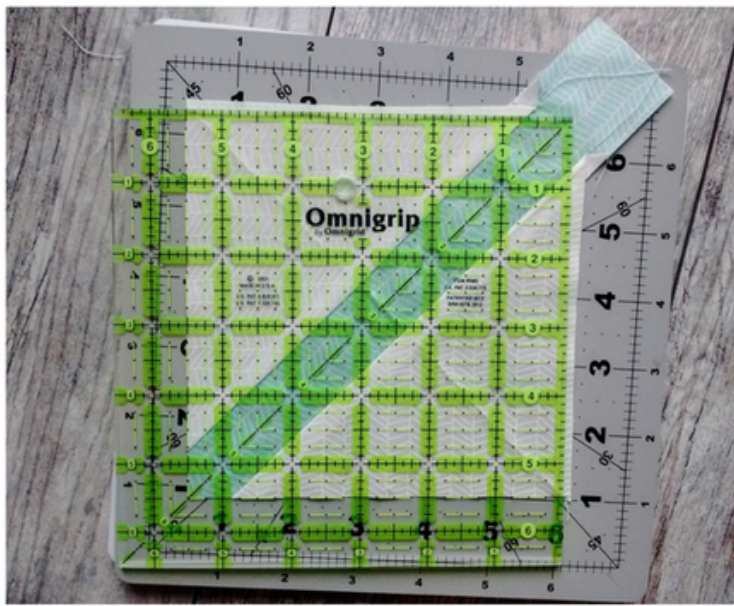


- Lay out the pinwheel, flying geese, and 3" squares as pictured
- Sew into three rows. Press the middle row seams inward. Press the top and bottom row seams outward
- Sew all the rows together, nesting seams. Press final seams open
- Square up your block to 10 1/4" x 10 1/4"
- Repeat until you have 15 blocks

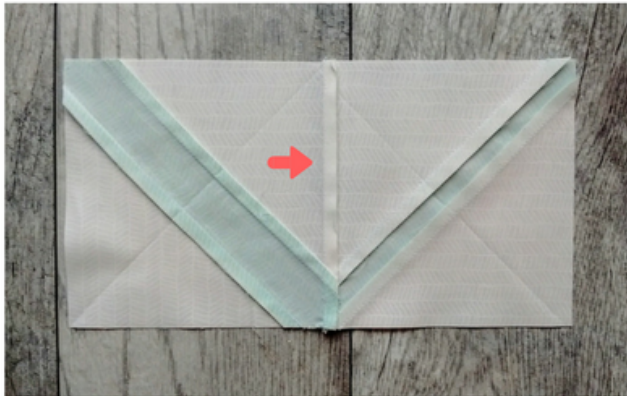
- "X" Blocks -



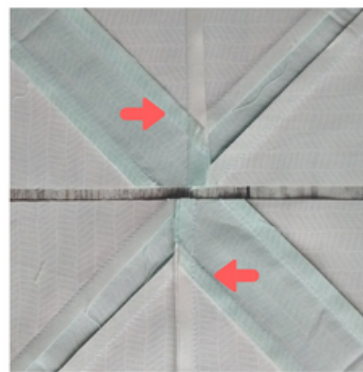
- Cut all the 5 1/2" squares in half diagonally
- Press the 120 triangles and 10" strips in half
- Sew each triangle to the middle strip, matching the center
- Repeat until you have 60 squares with a strip in the middle
- Press 30 blocks with the seam in. Press 30 with the seams out



- Square up each of the diagonal blocks to 5 1/2" x 5 1/2"
- To do this, line up a 45 degree line with the center of the strip
- Cut the two sides that are exposed
- Twist your piece line up the 45 degree line again and cut the remaining two sides.



- Grab a piece with the seams pressed in, and one with the seams pressed out
- Place right sides together and sew 1/4" seam
- Press the center seam to the right



- Take two pieces, and flip one to make the "X"
- Join together, seams will nest. Press final seam open.
- Square up to 10 1/4" x 10 1/4." Repeat until you have 15 X blocks

- Quilt Top Assembly -



- Lay out your blocks into 5 rows
- 3 rows should start with an X block
- 2 rows start with a pinwheel block
- Press the rows beginning with an X with the seams to the right
- Press the rows beginning with a pinwheel with the seams to the left
- Join all the rows, nesting seams
- Cut your border fabric so that you have 8 strips 5" x 40"
- Join them together in pairs so you have strips that are 5" x 80"
- Sew the border to two sides. Trim and sew border on the remaining sides
- Press seams open. Baste, quilt and bind as desired.

