

moda BAKE SHOP



EASY

In the hustle and bustle of camp life, it's nice to take a moment to stop and smell the flowers. These tulip blocks are the optional cornerstone blocks for the first round. Whether to add cornerstone blocks is completely up to you--choose what works best for your quilt!

NOTE: This is one post in a series of quilt-along posts. Start from the beginning with the first post [{here}](#).

Each block requires three fabrics (A, B, and background) and finishes at 3 inches square.

INGREDIENTS

makes four cornerstone blocks

Fabric A:

- [4] 3 ½" by 2" rectangles
- [2] 2 ½" squares

Fabric B:

- [4] 1 ¼" square

Background Fabric:

- [4] 1 ¼" square
- [4] 2" by 1 ¼" rectangles
- [4] 2" square
- [2] 2 ½" square

INSTRUCTIONS

Assembling the Block

First, we will assemble the half-square triangles.

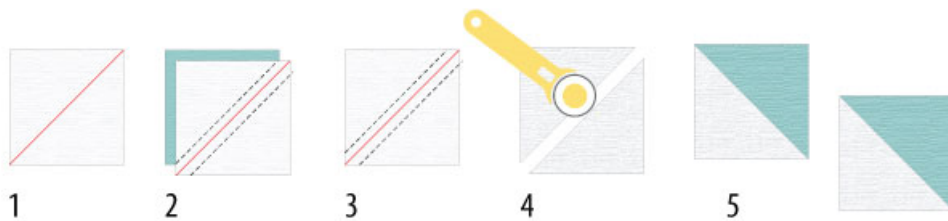
7/5/2018

Original Recipe can be found at www.modabakeshop.com

Recipes are sometimes altered to correct errors. Please ensure that you have downloaded the most recent Printer Friendly Version before starting your project. If you find a mistake in this pattern, please contact modabakeshop@unitednotions.com.

This is an original pattern not intended for sale.

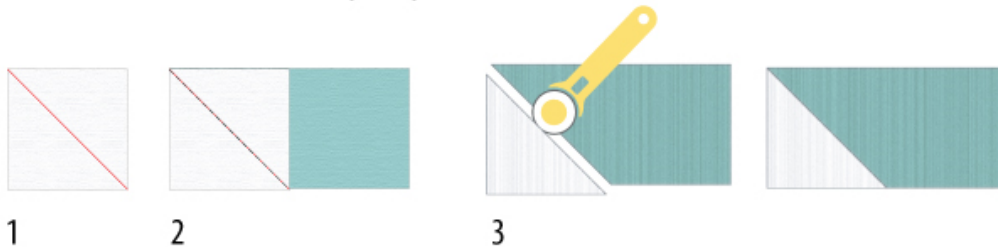
HALF-SQUARE TRIANGLES (HSTs)



1. Draw a line on the diagonal of the wrong side of (1) 2½" background square.
2. Pair with (1) 2½" square of fabric A.
3. Sew ¼" away from each side of the pencil line.
4. Cut on the pencil line.
5. Press towards the darker fabric and square up to 2".

Next, we will assemble the Easy Corner Triangles (ECTs).

EASY CORNER TRIANGLES (ECTs)



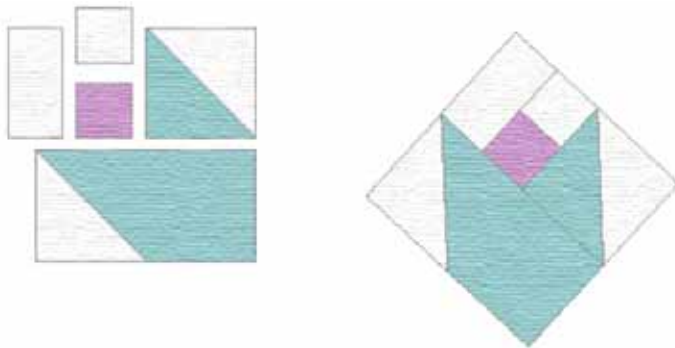
1. Draw a pencil line on the diagonal of (1) 2" square of background fabric.
2. Match the background fabric to the left edge of (1) 3½" by 2" rectangle of fabric A and sew along the pencil line.
3. Trim ¼" to the left of the pencil line and press toward darker fabric.

Finally, we will assemble the block.

Take a 1¼" square of Fabric B and a 1¼" square of background fabric. Sew together. Press towards fabric B.

Sew a 2" by 1¼" rectangle of background fabric to the side of the two squares with the square of fabric B in the lower right corner. Press towards the rectangle.

Join HST and ECT units as shown below.



FINISHED BLOCK

Repeat to make a total of four cornerstone blocks.

YIELD

The Tulip Field block finishes at 3" square (measures 3.5" square unfinished).

Christine Weld

[blog: [The Quarter Inch](#)]

[instagram: [@christine.weld](#)]

7/5/2018

Original Recipe can be found at www.modabakeshop.com

Recipes are sometimes altered to correct errors. Please ensure that you have downloaded the most recent Printer Friendly Version before starting your project. If you find a mistake in this pattern, please contact modabakeshop@unitednotions.com.

This is an original pattern not intended for sale.